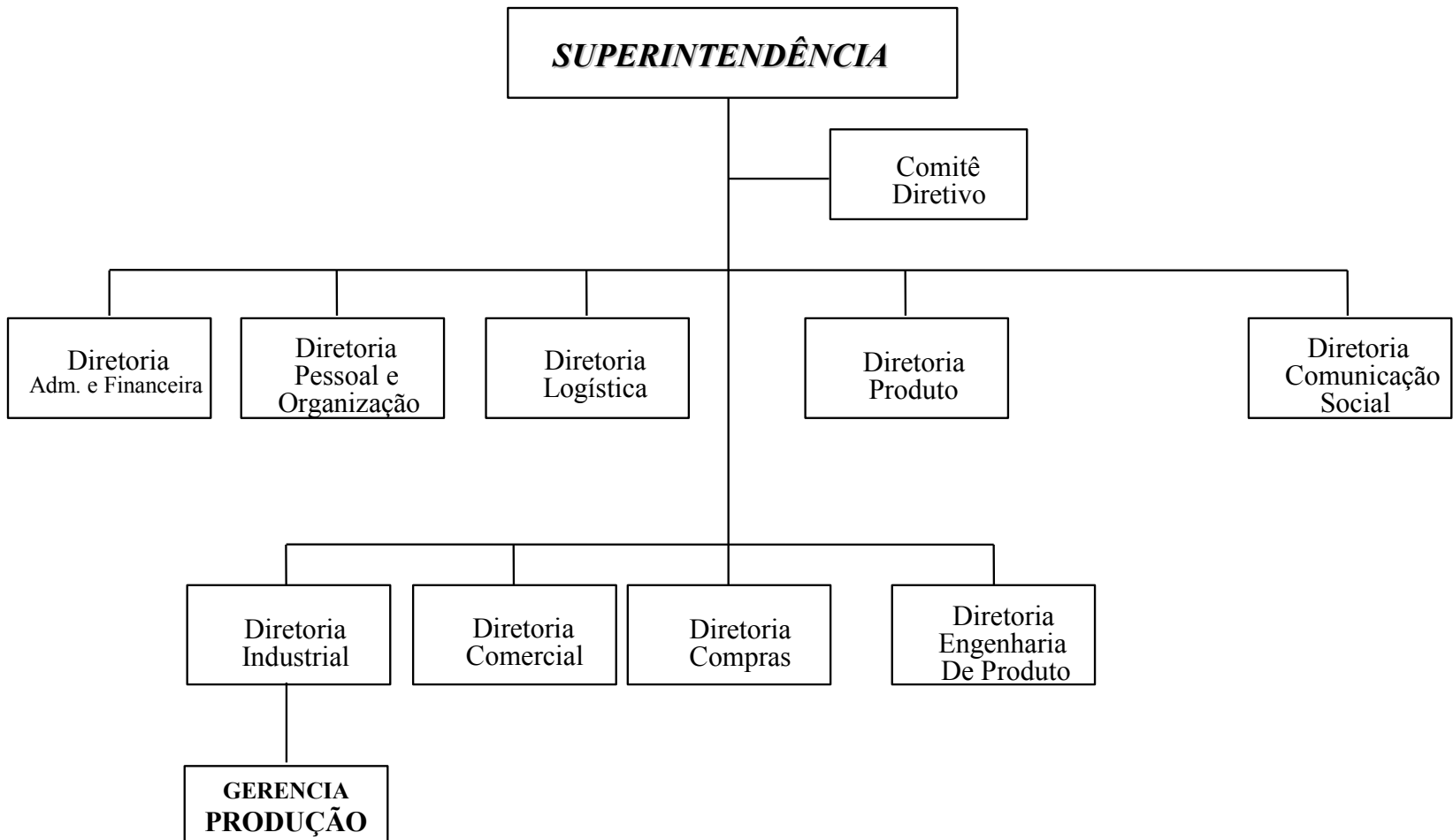


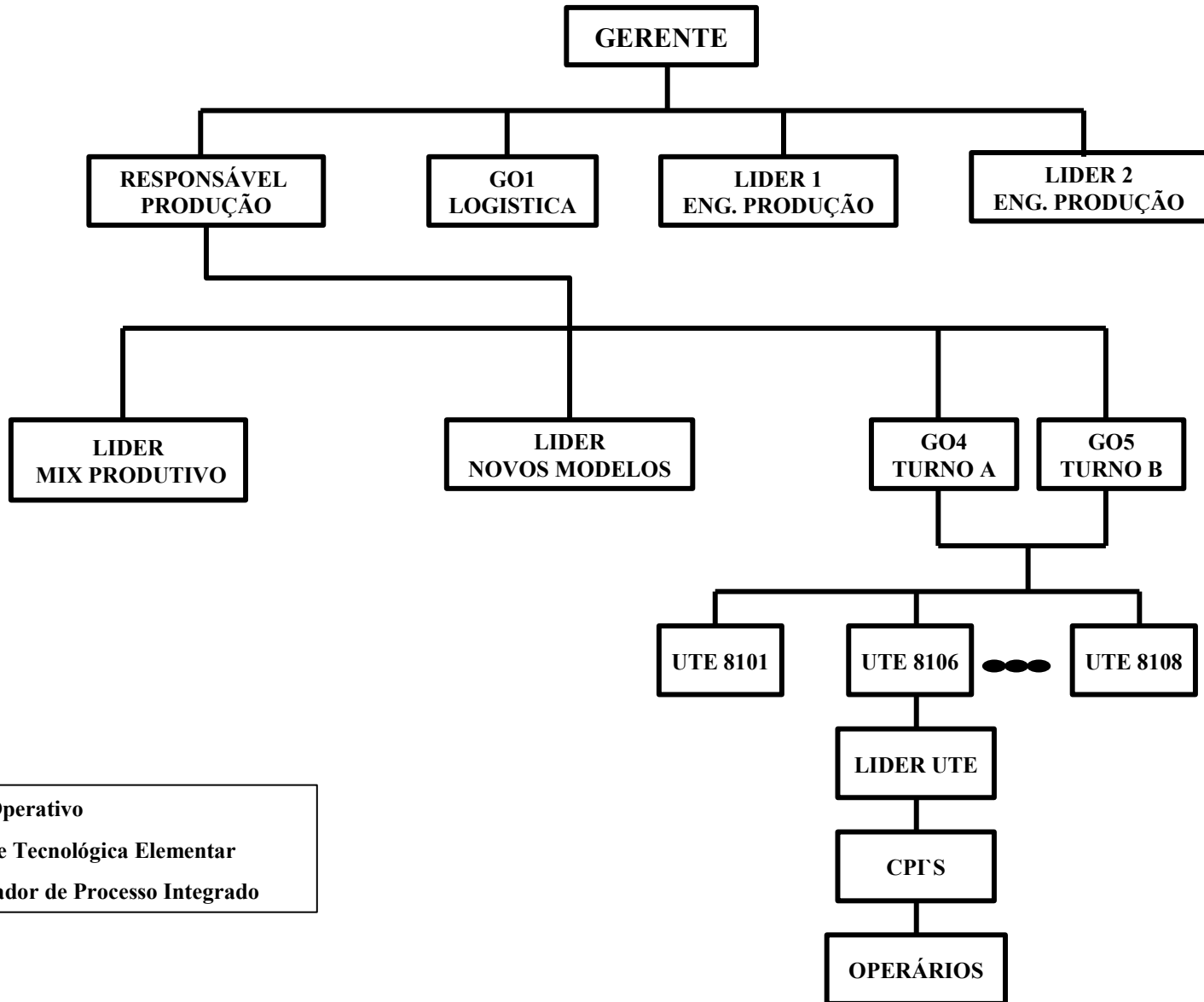
ORGANOGRAMA DA EMPRESA

ANEXO 1



ORGANOGRAMA DA PRODUÇÃO

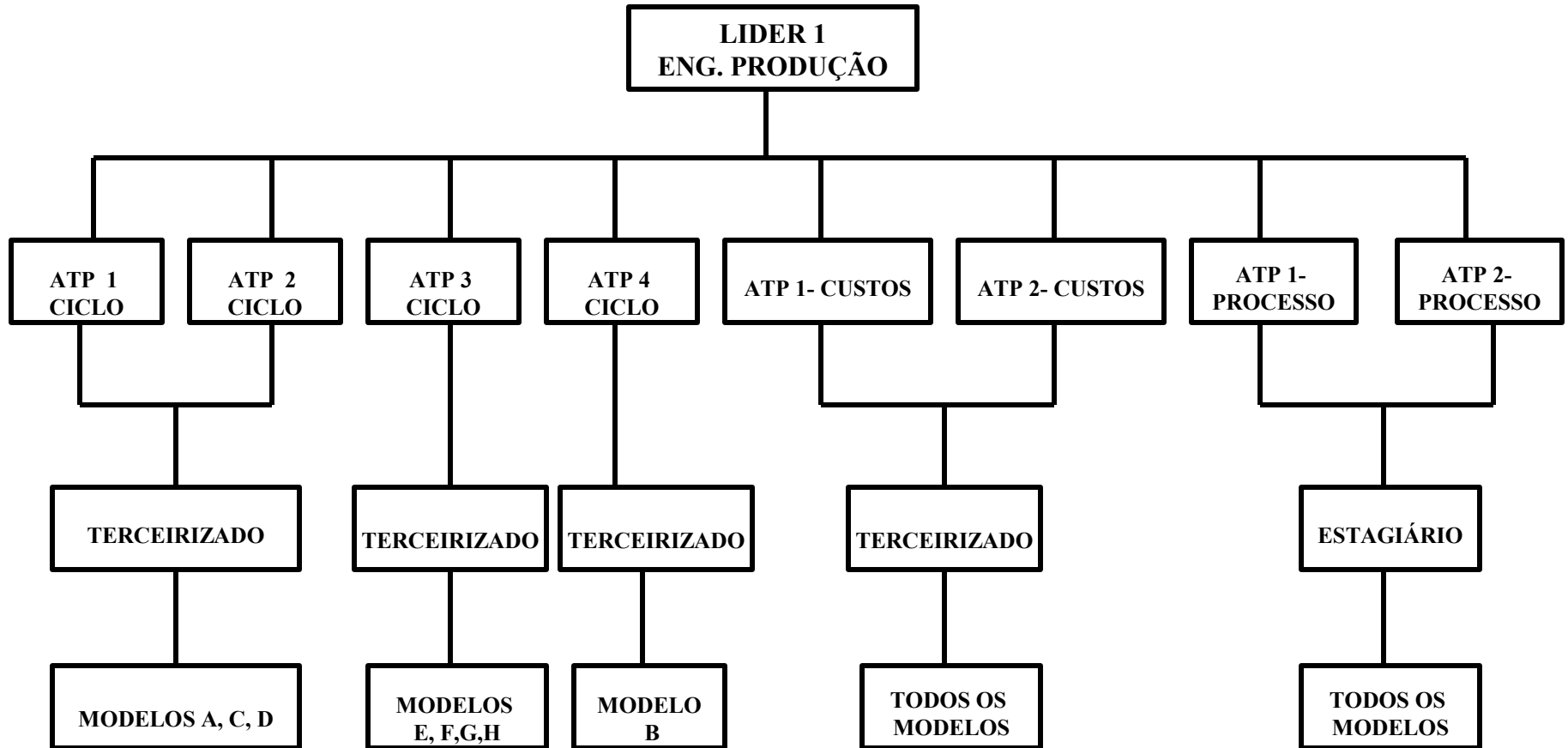
ANEXO 2



GO – Gestor Operativo
UTE – Unidade Tecnológica Elementar
CPI – Controlador de Processo Integrado

ORGANOGRAMA DA ENG. PRODUÇÃO

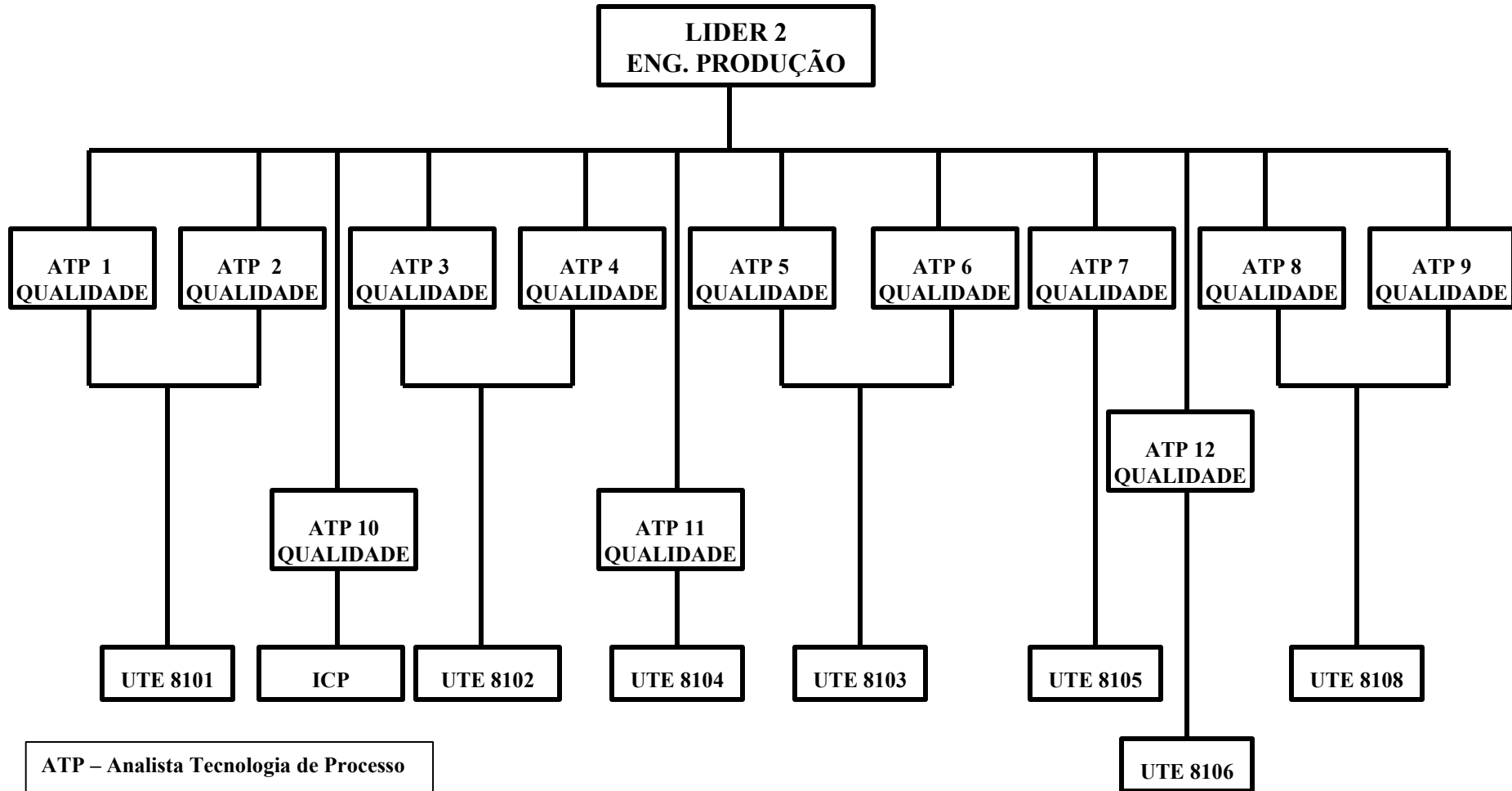
ANEXO 3



ATP – Analista Tecnologia de Processo
UTE – Unidade Tecnológica Elementar

ORGANOGRAMA DA ENG. PRODUÇÃO

ANEXO 4



ATP – Analista Tecnologia de Processo
UTE – Unidade Tecnológica Elementar
ICP –Percepção Inicial do Cliente

200 pontos Funilaria 2005/2006

ANEXO 5

Indicador		8101	8102	8103	8104	8105	8106	8108
Acabamento UEVC - Q	UTE	12,0	12,0	9,0	15,0	11,0	11,0	17,0
	Incentivo	4,0	4,0	4,0	4,0	4,0	4,0	4,0
ICP Produto - Q	UTE	9,0	12,0	9,0	15,0	11,0	14,0	17,0
	Incentivo	4,0	4,0	4,0	4,0	4,0	4,0	4,0
Prova D'agua - Q	UTE	12,0	17,0	13,0	NP	16,0	11,0	NP
	Incentivo	4,0	4,0	4,0	NP	4,0	4,0	NP
TOC - Q	UTE	9,0	6,0	13,0	NP	11,0	14,0	12,0
	Incentivo	4,0	4,0	4,0	NP	4,0	4,0	4,0
Funcionamento - Q	UTE	12,0	6,0	5,0	NP	11,0	11,0	6,0
	Incentivo	4,0	4,0	4,0	NP	4,0	4,0	4,0
Refugo ponta de linha Montagem - Q		12,0	13,0	10,0	12,0	4,0	3,0	4,0
ICP Macro - Q		6,0	9,0	7,0	8,0	7,0	5,0	8,0
Refugo - Ponta Linha Funilaria - Q		6,0	6,0	7,0	11,0	7,0	5,0	8,0
Revisões Funilaria - Q		6,0	3,0	7,0	11,0	3,0	5,0	12,0
Qual. Entrada Pintura - Q		4,0	4,0	7,0	12,0	NP	11,0	8,0
Alerta - Q		4,0	4,0	6,0	6,0	6,0	8,0	6,0
Refugo no Pátio da 8105 - Q		6,0	6,0	5,0	NP	11,0	NP	NP
Alerta pendente - Q		2,0	2,0	2,0	2,0	2,0	2,0	2,0
Auditoria Mirada - Q		NP	NP	NP	8,0	NP	NP	NP
TOTAL UTE		100,0	100,0	100,0	100,0	100,0	100,0	100,0
TOTAL INCENTIVO		20,0	20,0	20,0	8,0	20,0	20,0	16,0
Sub Total Qualidade		120,0	120,0	120,0	108,0	120,0	120,0	116,0
Desp.Material Indireto - CONSUMO -C		30,0	30,0	30,0	30,0	30,0	30,0	30,0
Desp.Material Direto - C		10,0	10,0	10,0	10,0	10,0	10,0	10,0
Sub Total Custo		40,0	40,0	40,0	40,0	40,0	40,0	40,0
Acidente Trabalho - G		12,0	12,0	14,0	12,0	12,0	14,0	14,0
Auditoria Processo - G		10,0	10,0	12,0	10,0	10,0	12,0	12,0
Programa Limpo - G		8,0	8,0	10,0	8,0	8,0	10,0	10,0
T.P.M. - G		6,0	6,0	NP	6,0	6,0	NP	NP
Sub Total Gestional		36,0	36,0	36,0	36,0	36,0	36,0	36,0
Perdas P.O - M		20,0	20,0	20,0	20,0	20,0	20,0	20,0
Absenteísmo - M		4,0	4,0	4,0	4,0	4,0	4,0	4,0
Sub Total Mão de Obra		24,0	24,0	24,0	24,0	24,0	24,0	24,0
Total		220	220	220	208	220	220	216
Status		😊	😊	😊	😊	😊	😊	😊