

THE ROLE OF PHYTIC ACID IN PLANT-BASED INGREDIENTS FOR ANIMAL FEED: A REVIEW

Data de submissão: 01/12/2023

Data de aceite: 01/02/2024

Hilton Nobre da Costa

Federal Rural University of Pernambuco
Recife - Pernambuco
<https://orcid.org/0000-0002-3485-3162>

Elisabete Albuquerque dos Santos Benvenuto

Federal Rural University of Pernambuco,
Agronomy Department
Recife - Pernambuco
<https://orcid.org/0000-0002-6625-4797>

Gilcifran Prestes de Andrade

Federal Rural University of Pernambuco,
Department of Animal Morphology and
Physiology
Recife - Pernambuco
<http://lattes.cnpq.br/8291064936047474>

Priscilla Virgínio de Albuquerque

Federal Rural University of Pernambuco,
Department of Animal Morphology and
Physiology
Recife - Pernambuco
<http://lattes.cnpq.br/4763179519142393>

Apolônio Gomes Ribeiro

Federal University of Paraíba, Department
of Animal Science
Areia - Paraíba
<https://orcid.org/0000-0001-6730-0209>

Dayane Albuquerque da Silva

Federal Rural University of Pernambuco,
Department of Animal Science
Recife - Pernambuco
<https://orcid.org/0000-0001-6243-3969>

Emmanuela Prado de Paiva Azevedo

Federal Rural University of Pernambuco,
Department of Rural Technology
Recife - Pernambuco
<https://orcid.org/0000-0002-8682-7556>

Diego Vicente da Costa

Federal University of Minas Gerais,
Institute of Agricultural Sciences
Montes Claros - Minas Gerais
<https://orcid.org/0000-0001-7096-396X>

Carlos Bôa-Viagem Rabello

Federal Rural University of Pernambuco,
Department of Animal Science
Recife - Pernambuco
<https://orcid.org/0000-0002-5912-162X>

Maria do Carmo Mohaupt Marques Ludke

Federal Rural University of Pernambuco,
Department of Animal Science
Recife - Pernambuco
<https://orcid.org/0000-0003-4895-2599>

ABSTRACT: Phytates play pivotal roles in plant physiology, acting as reservoirs for phosphorus and specific cations throughout various stages of plant life cycles. They are essential raw materials for cell wall formation after germination and shield seeds against oxidative stress during storage. However, their chelating effect forms robust bonds with amino acids, starch, and vital minerals, detrimentally affecting nutrient assimilation in feed and consequently diminishing feed yield. This article investigates the antinutritional aspects of phytates, exploring their reactivity, chelating actions, and adverse effects on gastrointestinal metal availability in animals. In addition, the article examines how unutilized phytates during poultry and pig feeding contribute to environmental concerns as they are excreted, contributing to groundwater eutrophication. The European Union now mandates feed supplementation with exogenous microbial phytases to address this issue. The terms phytate, phytic acid, myo-inositol, myo-inositol hexaphosphate, and phytin are used to denote different forms of this antinutritional factor. Despite being hydrolyzed by phytase enzymes, these compounds remain distinct. Inositol, a constituent prevalent in cereals, plays critical roles in various biological processes, including insulin signal transduction, calcium concentration control, and gene expression. This study elucidates the interaction of phytic acid with proteins under variation pH conditions, delineating its role in forming insoluble complexes and impacting enzymatic activities. Phytate is considered one of the most potent antinutritional factors, leading to substantial nutritional losses and diminished protein and energy availability in animals. The content of phytic phosphorus varies among ingredients of plant origin, which influences phosphorus bioavailability. Dietary phosphorous utilization varies across species, with ruminants exhibiting higher utilization due to fermenting microorganisms secreting phytase. Understanding the implications of phytates on nutrient availability is paramount for animal nutrition and environmental conservation. This article underscores the necessity of evaluating phosphorus bioavailability to enhance ingredient utilization and mitigate ecological impacts.

KEYWORDS: anti-nutritional factor, phytic acid, bioavailability, animal nutrition, environmental conservation

1 | INTRODUCTION

Phytates have several important functions in plant physiology during the life cycle of plants, including the storage of phosphorus and some cations, which provide raw material for the formation of the cell wall after germination. In addition, phytate protects the seed against oxidative stress during storage. The greatest negative effect of phytates is their chelating effect or strong bonds with other molecules such as amino acids, starch, and

minerals such as calcium, iron, zinc, and magnesium (Figure 01). This effect affects the assimilation of nutrients needed in feed and, consequently, a significant reduction in the yield of the feed used (Yin et al., 2007; Benevides et al., 2011).

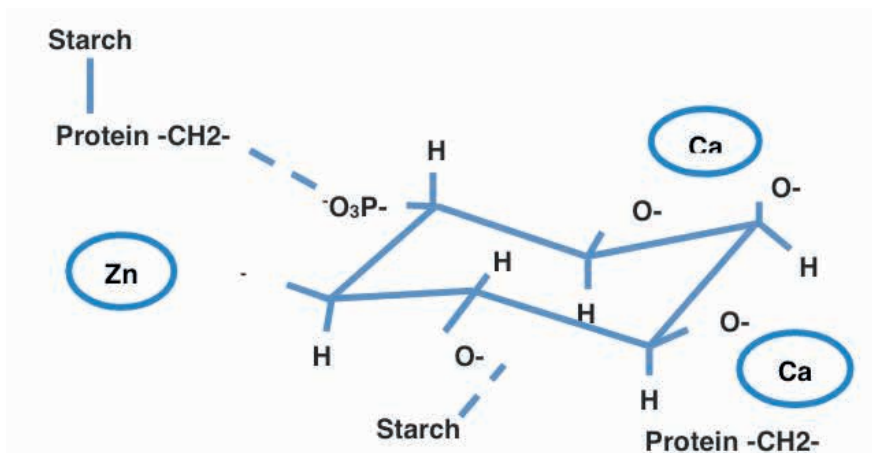


Figure 01. Representation of the phytate-nutrient complex (Reproduced from Bertechini, 2013)

According to Nagashiro (2007), the antinutritional nature of phytate can be attributed to several factors, such as: high reactivity of the molecule, providing a strong chelating action, making metals such as Ca⁺², Mg⁺², Zn⁺², Fe⁺² unavailable in the gastrointestinal tract of animals; formation of complexes with amino acids that resist enzymatic hydrolysis, because the phosphate groups of phytic acid can electrostatically bind to the terminal amine groups or to the residues of the amino acids lysine and arginine; interaction with amylase, trypsin, and acid phosphatase enzymes, among others, resulting in reduced activity and inhibition; formation of a phytate–mineral– protein complex that can be formed with multivalent cations, making the bound proteins less susceptible to proteolytic hydrolysis.

Another negative factor of phytates is that they are not used during the feeding of poultry and pigs, leading to their direct excretion into the environment. Phytates are hydrolyzed by microorganisms that are part of the soil microbiota, and the phosphorus released flows into the groundwater, causing eutrophication of water in areas where animals are intensively produced. In recent years, the European Union has passed important environmental laws obliging poultry and pig producers to supplement their feed with exogenous microbial phytases (Leal et al., 2010).

Phytate, phytic acid, *myo-inositol*, *myo-inositol* hexaphosphate (Figure 02) and phytin as terms used to refer to different forms of an anti-nutritional factor (Figure 02). Although phytase enzymes hydrolyze all these substances, they are distinct compounds: *myo-inositol* hexaphosphate, phytic acid or phytate, a term used to refer to the mixed salt of phytic acid; *myo-inositol* is the free form of the aromatic ring of phytate (inositol), without the phosphate groups (PO₄³⁻); phytin, on the other hand, refers specifically to the complex of *myo-inositol*

hexaphosphate with potassium, magnesium and calcium, as occurs in vegetables (Valle, 2010).

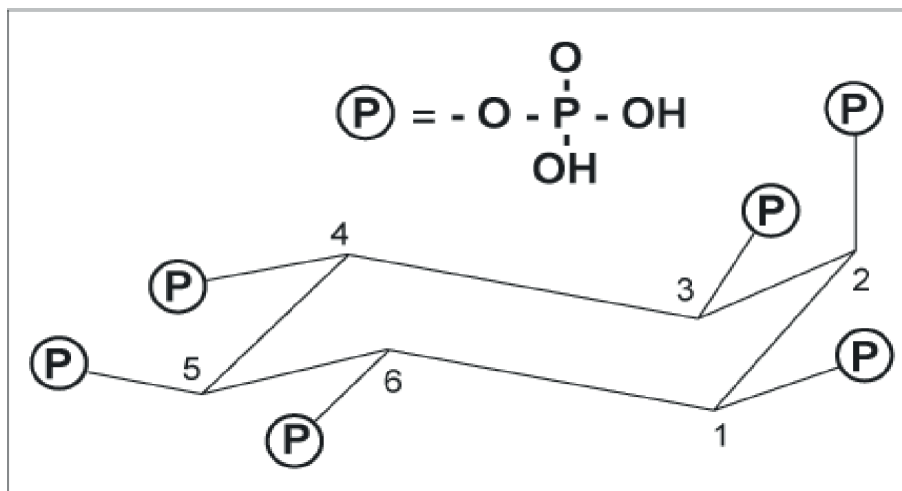


Figure 02. Molecular structure of phytate, *myo-inositol* 1,2,3,4,5,6-hexakis(dihydrogen phosphate) acid (Reproduced from Faria et al., 2006).

Phytate, phytic acid, myo-inositol, myo-inositol hexaphosphate (Figure 02), and phytin are terms used to refer to different forms of an antinutritional factor (Figure 02). Although phytase enzymes hydrolyze all these substances, they are distinct compounds: myo-inositol hexaphosphate, phytic acid, or phytate, a term used to refer to the mixed salt of phytic acid; myo-inositol is the free form of the aromatic ring of phytate (inositol), without the phosphate groups (PO_4^{3-}); phytin, on the other hand, refers specifically to the complex of myo-inositol hexaphosphate with potassium, magnesium, and calcium, as occurs in vegetables (Valle, 2010).

Inositol is found in many foods, especially cereals. As the basis of many signaling and secondary messenger molecules, inositol is implicated in many biological processes, including insulin signal transduction, control of intracellular calcium concentration, cell membrane potential, modulation of serotonin activity, fat metabolism, and reduction of blood cholesterol levels and gene expression (Larner, 2002).

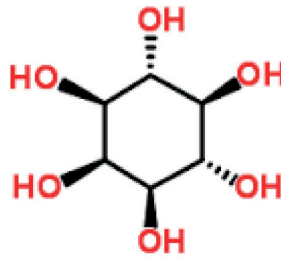


Figure 03. Chemical structure of the *myo-inositol* molecule (IUPAC, 1968)

According to Silva (2004), at neutral pH, orthophosphate groups have one or two negatively charged oxygen atoms; consequently, several cations can be strongly chelated between two phosphate groups or weakly chelated with one phosphate group. The interaction with the protein is dependent on pH conditions, as is done by ionic bonding, as shown in Figure 4. Under acidic conditions, phytic acid has a negative charge and can bind to basic residues through strong electrostatic interactions, resulting in an insoluble complex. At neutral pH, the protein will not bind to phytic acid because its charge is neutral. At basic pH, phytic acid forms a complex with the protein in the presence of divalent cations, which act as a bridge between the negatively charged carboxyl group and phytic acid. Several studies have shown that proteins from soy, corn, wheat, rapeseed, sunflower meal, and rice form complexes with phytic acid (Ravindran et al., 2001).

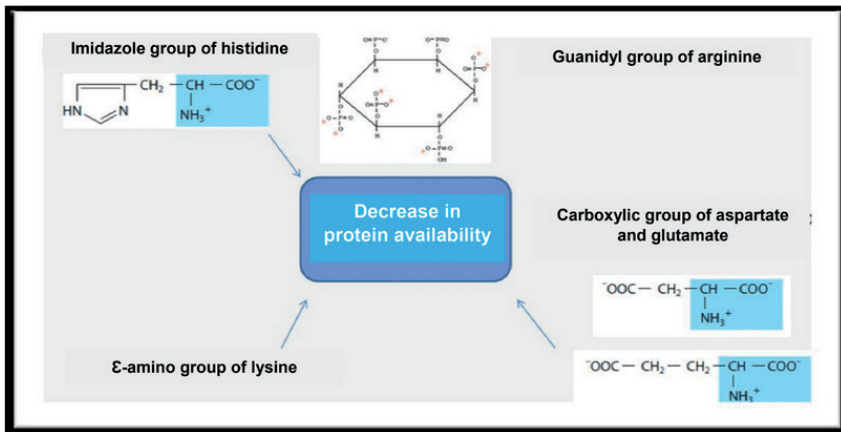


Figure 04. Schematic representation of the interaction between phytic acid and amino acids (Personal archive).

Phytate is a complex compound that is considered to be one of the most potent antinutritional factors. It is responsible for significant nutritional losses, reducing protein and energy availability to the animal as well as increasing mucin production and cell turnover in

the digestive tract (Cowieson et al, 2006). Phytic phosphorus is the phosphorus that forms part of the inositol hexaphosphate (IP₆) molecule, which is only found in plants. The inositol phosphates found in cereal grains contain approximately 90% of the inositol in the hexa phosphorus form (IP₆), with the remaining 10% corresponding to the sum of the penta (IP₅), tetra (IP₄), and triphosphates (IP₃). Consequently, only IP₅ and IP₆ have a negative effect on mineral bioavailability. The other inositol phosphatides formed have a low capacity to bind to minerals (Valle, 2010).

The amount of phytic phosphorus in cereal grains and oilseeds depends on their location. In maize, phytate is found in large quantities in the germ; in legumes, it accumulates in the cotyledons and soybeans; in particular, it is found attached to protein bodies distributed throughout the seed (Selle et al., 2003; Valle, 2010).

Animal nutrition is mainly based on ingredients of plant origin, in which 66% of the phosphorus is in the form of inositol hexaphosphate, which is unavailable for absorption by non-ruminant animals. The phytate content varies between ingredients (Table 02), directly affecting the bioavailability of phosphorus. According to the NRC (1994), only 33% and 42% of this mineral is bioavailable in corn and soybean meal, respectively (Borgatti et al., 2009). Determining the bioavailability of phosphorus is essential for assessing the use of ingredients by animals and protecting the environment, as the ecological impact of eliminating fecal phosphorus is considerable (Borgatti et al., 2009).

| Ingredients | Total phosphorus (%) | Phytic phosphorus (%) | Non-phytic phosphorus (%) | Phosphorus digestibility (%) | Digestible phosphorus (%) |
|--------------------|----------------------|-----------------------|---------------------------|------------------------------|---------------------------|
| Corn | 0,24 | 0,17 | 0,07 | 29,0 | 0,07 |
| Wheat | 0,27 | 0,19 | 0,08 | 38,0 | 0,1 |
| Rice bran | 1,31 | 1,05 | 0,26 | 16,0 | 0,24 |
| Wheat bran | 0,99 | 0,79 | 0,20 | 37,0 | 0,37 |
| Soybean meal | 0,39 | 0,23 | 0,16 | 42,0 | 0,16 |
| Meat and bone meal | 5,0 | 0,0 | 5,0 | 61,0 | 3,05 |
| Fish meal | 2,20 | 0,0 | 2,20 | 74,0 | 1,63 |

Table 02. Contents of total phosphorus, phytic phosphorus, non-phytic phosphorus and phosphorus digestibility in ingredients used in poultry and pig feed (Borgatti et al., 2009).

level of utilization of dietary phosphorus also varies according to species and is directly related to the anatomical and physiological characteristics of the gastrointestinal tract. Therefore, in the descending order of utilization of dietary phosphorus, there are ruminants, monogastric herbivores, poultry, and pigs. It should be noted that, for poultry and pigs, the bioavailability of dietary phosphorus is approximately 30% and 20%–60%, respectively. Younger animals are less able to use phytic phosphorus and are even more susceptible to a reduction in dietary digestibility (Silva, 2012).

In ruminant animals, phytic phosphorus is made available by fermenting microorganisms, which secrete the enzyme phytase, which has an intensive action on phytates (Dvoraková et al., 1997). However, phosphorus that may not have been made available by rumen microorganisms flows into other gastric compartments, remains in an unavailable form, and is finally excreted (Silva, 2012).

2 | CONCLUSION

In conclusion, the multifaceted role of phytates in plant physiology is undeniable, encompassing the storage of phosphorus and cations, formation of the cell wall, and protection of seeds against oxidative stress. However, their substantial negative impact stems from their chelating effect, forming strong bonds with essential molecules and minerals, preventing the assimilation of nutrients in food and consequently reducing food yields. The anti-nutritional nature of these compounds is attributed to their high reactivity, strong chelating action, and formation of complexes with amino acids, hindering enzymatic hydrolysis and leading to a reduction in the activity of critical enzymes. In addition, there are environmental consequences, such as the eutrophication of groundwater, when phytates not used in poultry and pig feed result in direct excretion into the environment. In this context, it is important to meet the requirements for supplementing animal feed with exogenous microbial phytases. Inositol, abundant in cereals, plays pivotal roles in various biological processes, underscoring the broader implications of phytates in nutritional contexts. The intricate interaction of phytic acid with proteins under different pH conditions further elucidates its impact on forming complexes and affecting enzymatic activities. Ultimately, the potent antinutritional nature of phytates, responsible for substantial nutritional losses and diminished protein and energy availability in animals, prompts a critical reevaluation of dietary phosphorus utilization. The variable utilization across species highlights the importance of considering anatomical and physiological characteristics in assessing dietary phosphorus bioavailability.

Understanding the complex interplay of phytates in plant and animal systems is essential not only for optimizing animal nutrition but also for mitigating the ecological impacts associated with their presence in feed and subsequent excretion into the environment.

REFERENCES

ANDRIGUETTO J. P., PERLY, L., MINARDI, I., GEMAE L. A., FLEMMING J.S., SOUZA, G.A., BONA, A. **Nutrição animal**. Livraria Nobel: São Paulo, 385p. v. 1, 1982.

ANTOV, M.G.; PERICIN, D.M.; DASIC, M.G. **Aqueous two-phase partitioning of xylanase produced by solid-state cultivation of *Polyporus squamosus***. *Process Biochemistry* (41):232-235, 2006.

ARAÚJO, D.M., SILVA, J.H.V., MIRANDA, E.C. **Wheat bran and enzyme complex in the feeding of semi-heavy layers in the production phase.** Revista Brasileira de Zootecnia, v. 37, n. 5, p. 843-848, 2008.

AZEVEDO, A.M., GOMES, A.G., ROSA, P.A.J., FERREIRA, I.F., PISCO, A.M.M.O., AIRES-BARROS, M.R. **Partitioning of human antibodies in polyethylene glycol - sodium citrate aqueous two-phase systems.** Separation and Purification Technology (65):14-21, 2009.

BARBOSA, N.A.A.; SAKOMURA, N.K.; BONATO, M.A.; HAUSCHILD, L.; OVIEDORONDON, E. **Exogenous enzymes in broiler diets: performance.** Ciência Rural, v.42, p.1497-1502, 2012. DOI: 10.1590/S0103-84782012000800027.

BEDFORD, M.R.; PARTRIDGE, G.G. **Enzymes in farm animal nutrition.** Oxfordshire: CABI Publishing., 319 p., 2010. DOI: 10.1079/9781845936747.0000.

BEIJERINCK, M.W. **Journal of Colloid and Interface Science** (7):16, 1910.

BENEVIDES, M.V.S., SOUZA, R.D.B, LOPES, M.V. **Fatores antinutricionais em alimentos: Segurança Alimentar e Nutricional,** Campinas, 18 (2): 67-79, 2011.

BENSCH, M., SELBACH, B., HUBBUCH, J. **High throughput screening techniques in downstream processing: preparation, characterization and optimization of aqueous two-phase systems.** Chemical Engineering Science (62):2011-2021, 2007.

BETERCHINI, A.G. **Nutrição de Monogástricos,** 2nd revised edition, Editora UFLA, Universidade Federal de Lavras - MG, 373 p., 2013.

BHAVSAR, K., RAVI KUMAR, V., KHIRE, J. **Downstream Processing of Extracellular Phytase from *Aspergillus niger*: Chromatography Process Vs. Aqueous Two Phase Extraction for its Simultaneous Partitioning and Purification.** Process Biochem 47: 1066-1072, 2012.

BINDU, S., SOMASHEKAR, D., JOSEPH, R. **A comparative study on permeabilization treatments for *in situ* determination of phytase of *Rhodotorula gracilis*.** Lett. Appl.Microbiol., v.27, p.336-340, 1998.

BOERIS, V., SPELZINI, D., FARRUGGIA, B., PICO, G. **Aqueous two-phase extraction and polyelectrolyte precipitation combination: A simple and economically technologies for pepsin isolation from bovine abomasum homogenate.** Process Biochemistry (44):1260-1264, 2009.

BORGATTI, L.M.O., VITTI, D.M.S.S., OLIVEIRA, T.M., MARTINS, B.A.B., ALBUQUERQUE, R., SOUZA, L.W.O. **Relative bioavailability of phosphorus in ingredients with low phytate content determined on the basis of bone mineralization in broilers.** Revista Brasileira de Zootecnia, v.38, n.10, p.1901-1906, 2009.

BOTELLA, C.; DIAZ, A.; ORY, I.; WEBB, C; BALANDINO, A. **Xylanase and pectinase production by *Aspergillus awamori* on grape pomace in solid fermentation.** Process Biochemistry (42):98-101, 2007.

- BREJNHOLT, S. M., DIONISIO, G., GLITSOE, V., SKOV, L. K., BRINCH-PEDERSEN, H. **The degradation of phytate by microbial and wheat phytases is dependent on the phytate matrix and the phytase origin.** J. Sci. Food Agric. 91: 1398-1405, 2011.
- CAMPESTRINI, E., SILVA, V.T.M., APPELT, M.D. **Use of enzymes in animal feed.** Revista Eletrônica Nutritime, v.2, n.6, p.254-267, 2005.
- CANALES, M., BALLESTEROS, C., MORENO-CID, J.A., ESPINOSA, A.M., VILLAR M, DE LA FUENTE. **Extractive bioconversion to produce the *Aedes albopictus* akirin in an aqueous two-phase system supporting *Pichia pastoris* growth and protein secretion.** Biochemical Engineering Journal (46):105-114, 2009.
- CASEY, A.; WALSH, G. **Purification and characterization of extracellular phytase from *Aspergillus niger* ATCC 9142.** Bioresource Technology. 86 (2) 183-188, 2004.
- CISNEIROS, M., BENAVIDES, J., BRENES, C. H., RITO-PALOMARES, M. **Recovery inaqueous two-phase systems of lutein produced by the green microalga *Chlorella protothecoides*.** Journal of Chromatography B, v.807, p.105-110, 2004.
- CLEÓPHAS, G.M.L., Van HARTINGSVELDT, W., SOMERS, W.A.C. **Enzymes can play an important role in poultry nutrition.** World Poult., 11(4):12-15, 1995.
- CORTELAZZI, C.Q.L. **Available phosphorus for broilers in phosphates for animal feed.** Master's thesis. Faculty of Veterinary Medicine and Zootechny, University of São Paulo, p. 61, 2006.
- COSTA, S.A., PESSOA JR, A., ROBERTO, I.C. **Partitioning of xylanolytic complex from *Penicillium janthinellum* by an aqueous two-phase system.** Journal of Chromatography B (743):339-348, 2000.
- COSTA, F.G.P.; QUIRINO, B.J.S.; GIVISIEZ, P.E.N.; SILVA, J.H.V.; ALMEIDA, H.H.S.; COSTA, J.S.; OLIVEIRA, C.F.S.; GOULART, C.C. **Layers fed with different levels of energy and soybean oil in feed.** Arch. zootec., v.58, n.223, 2009.
- COWIESON, A. J., HRUBY, M., PIERSON, E.E.M. **Evolving enzyme technology: impact on commercial poultry nutrition.** Nutrition Research Reviews 19 (1) 90-103, 2006.
- DA SILVA, M.E., FRANCO, T.T. **Purification of Soybean Peroxidase (Glycine Max) by Metal Affinity Partitioning in Aqueous Two-Phase Systems.** J Chromatogr B 743: 287-294, 2000.
- DASGUPTA, S., DASGUPTA, D., SEM, M., BISWAS, B.B. **Interaction of myoinositoltriphosphate-phytase complex with the intracellular Ca²⁺ mobilization in plants.** Biochemistry, v.35, p.4994-5001, 1996.
- DEDAVID, E., SILVA, L.A. **Production, characterization of cellulase enzymes by *Aspergillus phoenicis*.** Master's dissertation. Federal University of Rio Grande do Sul, 2008.
- DIBNER, J. J., RICHARDS, J. D. **Antibiotic growth promoters in agriculture: History and mode of action.** Poult. Sci. 84:634-643, 2005.

DVORAKOVÁ, J. **Characterization of Phytase Produced by *Aspergillus niger***. Folia Microbiol. 42 (4), p. 349-352, 1997.

EL-GINDY, A.A., IBRAHIM, Z.M., ALI, U.F., EL-MAHDY, O.M. **Extracellular phytase production by solid-states cultures of *Malbranchea sulfurea* and *Aspergillus niveus* on cost-effective medium**. Research Journal of Agricultural and Biological Sciences 5 (1):42-62, 2009.

ENGELEN, A.J., HEEFT, VAN DER., RANSDORP, H.G.P., SMIT, L.C.E. **Simple and rapid determination of phytase activity**. J. AOAC Int., v.77, p.760-764, 1994.

FARIA, O.L.V., KOETZ, P.R., SANTOS, M.S.; NUNES, W.A. **Phosphorus removal from rice parboiling effluents by stimulated biological absorption in a sequential batch reactor (RBS)**. Ciênc. Tecnol. Aliment., vol.26, n. 2, Campinas, 2006.

FIREMAN, A.K.B.A.T.; FIREMAN, F.A.T. **Fitase na alimentação de poedeiras**; Revista Ciência Rural (28):529-534, 1998.

FISKE, C.H., SUBBAROW, Y. **The colorimetric determination of phosphorus**. J. Biol.Chem., v.66, p.375-410, 1925.

FRANCO, T.T.; KILIKIAN, B.V.; COIMBRA, J.S.R.; MEIRELES, A.J.A. **Liquid-liquid extraction in aqueous two-phase systems**. Purificação de Produtos Biotecnológicos, 1 ed., Editora Manole, p. 114-165, 2005.

FRY, R.E., ALLRED, J.B., JENSEN, L.S., MCGINNIS, J. **Influence of enzyme supplementation and water treatment on the nutritional value of different grains for poult**s. Poultry Science, v. 37, p. 372-375, 1958.

GARCHOW, B.G., JOG, S.P., MEHTA, B.D., MONOSSO, J.M., MURTHY, P.P.N. **Alkaline phytase from *Lilium longiflorum*: Purification and structural characterization**. Protein Expres. Purif., v.46, p.221-232, 2006.

GREINER, R., SILVA, L.G., COURI, S. **Purification and characterization of an extracellular phytase from *Aspergillus niger* 11T53A9**. Braz. J. Microbiol., v. 40, p. 795-807, 2009.

GUIMARÃES, I.C., SOUZA, A.R.M., CORNÁLIO, V.M.O., PEREIRA, J., VILLELA, V.A. **Identification of toxigenic *Aspergillus spp.* in rice**. Revista de Ciência e Tecnologia de Alimentos 30 (1):60-62, 2010.

GUIMARÃES, I.G., FALCON, D.R., SCHICH, D., BARROS, M.M., PEZZATO, L.E. **Apparent digestibility of feeds containing enzyme complex for Nile tilapia**. Arquivo Brasileiro de Medicina Veterinária Zootecnia (61):6, 2009.

GULATI, H.K.; CHADA, B.S.; SAINI, H.S. **Production, purification and characterization of thermostable phytase from thermophilic fungus *Thermomyces lanuginosus* TL-7**. Acta Microbiologica et Immunologica Hungarica 54(2):121- 138, 2007.

GUO, M-J., ZHUANG, Y-P., CHU, J., ZHANG, S-L., XIONG, A.S., PENG, R.H., YAO, Q-H. **Production and purification of a novel thermostable phytase by *Pichia pastoris* FPHY34**. Process Biochemistry, v. 42, p. 1660-1665, 2007.

HAN, Y.K., JIN, Y.H., KIM, J.H., TRACKER, P.A. **Influence of enzyme and/or lysolecithin supplementation on performance, nutrient digestibility and egg quality for laying hens.** Trends Animal Vet Science Journal, v. 1, n. 1, p. 28-35, 2010.

HARTER-DENIS, J. **Biotechnology in the feed industry.** Proc. Alltech's 15th Annual Symposium. Ed. T.P. Lyons and K.A. Jacques. Nottingham University Press. pp: 511-522, 1999.

HEDAYATE, M.T., PASQUALOTTO, A.C., WARN, P.A., BOWYER, P., DENNING, D.W. ***Aspergillus flavus*: human pathogen, allergen and mycotoxin producer.** Microbiology 153:1677-1692, 2007.

HEINONEN, J.K., LAHTI, R.J. **A new and convenient colorimetric determination of inorganic orthophosphate and its applications to the assay of inorganic pyrophosphate.** Anal. Biochem., v.113, p.313-317, 1981.

HEMAVATHI, A.B., RAGHAVARAO, K.S.M.S. **Differential Partitioning of β -Galactosidase and β -Glucosidase using Aqueous Two Phase Extraction.** Process Biochem 46: 649-655, 2011.

HENN, J.D. **Enzymatic additives in pig and poultry diets.** In: Biochemistry of animal tissue. Postgraduate in Veterinary Sciences, Federal University of Rio Grande do Sul, 2009. Available at: <http://www6.ufrgs.br/bioquimica/> Accessed on: 12/12/2014.

HUANG, H., HUIYING, L., YANG, P., MENG, K., WANG, Y., YUAN, T., BAI, Y., YAO, B. **A novel phytase with preferable characteristics from *Yersinia intermedia*.** Biochem. Bioph. Res. Co. 350: 884-889, 2006.

IGBASAN, F.A., K. MANNER, G. MIKSCH, R. BORRIS, A. FAROUK, O. SIMON. **Comparative studies on the *in vitro* properties of phytases from various microbial origins.** Arch. Anim. Nutr. 53:353-373, 2000.

IUPAC-IUB. **International Union of Pure and Applied Chemistry - International Union of Biochemistry.** The nomenclature of cyclitols. Eur. J. Biochem. (51), 1968.

JONGBLOED, A.W., KEMME, P.A. **Apparent digestibility and retention of nutrients bound to phytate complexes as influenced by microbial phytase and feeding regimen in pigs.** Journal of Animal Science 72 (1):126-132, 1994.

KARKAS, T., ÖNAL, S. **Characteristics of Invertase Partitioned in Poly (Ethylene Glycol)/Magnesium Sulfate Aqueous Two-Phase System.** Biochem Eng J 60: 142-150, 2012.

KIM, Y.O., KIM, H.K., BAE, K.S., YU, J.H., OH, T.K. **Purification and properties of a thermostable phytase from *Bacillus sp.*** DS11. Enz. Microb. Technol., v. 22, p. 2-7, 1998.

KIM, S.D., KIM, M.K., WOO, C.J., RHEE, C.H., LEE, S.H. **Characterization of psychrophilic yeast in Kimchi.** Food Sci Biotechnol, 9:277-279, 2006.

KLICH, M.A. ***Aspergillus flavus*: the major producer of aflatoxin.** Mol. Plant Pathol. 8: 713-722, 2007.

KORNEGAY, E.T. **Effect of phytase on the bioavailability of phosphorus, calcium, amino acids, and trace minerals in broilers and turkeys.** BASF, Technical Symposium. World Congress Center, p. 39-70, 1996.

- KONIETZNY, U., GREINER, R. **Molecular and catalytic properties of phytate-degrading enzymes (phytases)**. Int. J. Food Sci. Tech. 37: 791-812, 2002.
- KRABBE, E. L.; LORANDI, S. **VI Current developments and trends in the use of enzymes in poultry nutrition**, Latin American Congress of Animal Nutrition, Federal University of Pelotas - Pelotas/RS, 2014.
- LAMBRECHTS, C., BOZE, H., MOULIN, G., GALZY, P. **Utilization of phytate by some yeasts**. Biotechnol. Lett., v.14, p.61-66, 1992.
- LARNER, J. **D-chiro-inositol: its functional role in insulin action and its deficit in insulin resistance**. Int J Exp Diabetes Res 3(1): 47-60, 2002.
- LASSEN, S.F., BREINHOLT, J., OSTERGAARD, P.R., BRUGGER, R., BISCHOFF, A., WYSS, M., FUGLSANG, C.C. **Expression, gene cloning, and characterization of five novel phytases from four basidiomycete fungi : *Peniophora lycii*, *Agrocybe pediades*, *Ceriporia* sp., and *Trametes pubescens***. Appl. Environ. Microb., p.4701- 4707, 2001.
- LEAL, A.S., GONÇALVES, C.G., VIEIRA, I.F.R., CUNHA, M.R.R., GOMES, T.C.B., MARQUES, F.R. **Evaluation of mineral concentration and anti-nutritional factors phytate and oxalate in multimixtures from the Metropolitan Region of Belo Horizonte/MG**. Rev Soc Bras Alim Nutr. 35 (2):39-52, 2010.
- LEI, X. G., PORRES, J. M., MULLANEY, E. J., BRINCH-PEDERSEN, H. **Phytase source, structure and applications**. In: Industrial enzymes. Structure, Function and Applications, Polaina, J., MacCabe, A. P., Eds, pp. 505-529, Springer, ISBN -78-1- 4020-5376-4, Dordrecht, The Netherlands, 2007.
- LEI, X.G.; PORRES, J.M. **Phytase enzymology, applications, and biotechnology**. Biotechnology Letters, v.25, n.21, p.1787-1794, 2003.
- LIN, D-Q., WU, Y-T., MEI, L-H., ZHU, Z-Q., YAO, S-J. **Modelling the proteins portioning in aqueous polymer two-phase systems: influence of polymer concentration and molecular weight**. Chemical Engineering Science (58):2963-2972, 2003.~
- LIU, B., L.; RAFIQ, A., TZENG, Y.M., ROB, A. **The induction and characterization of phytase and beyond**. Enz. Microb. Technol., v.22, p.415-424, 2008.
- LIU, D., GUO,Y., WANG, Z., YUAN, J. **Exogenous lysozyme influences *Clostridium perfringens* colonization and intestinal barrier function in broiler chickens**. Avian Pathology, v. 39, n. 1, p. 17-24, 2010.
- MALHOTRA, V.K. **Biochemistry for Students**, 11, Ed. New Delhi, Jaypee Brothers Medical Publishers (P) Ltd, 406 p., 2006.
- MARCOS, J.C., FONSECA, L.P., RAMALHO, M.T., CABRAL, J.M.S. **Partial purification of penicillin acylase from *Escherichia coli* in poly(ethylene glycol)-sodium citrate aqueous two-phase systems**. Journal of Chromatography B (734):15-22,1999.
- MARLIDA, Y., DELFITA, R., ADNADI, P., CIPTAAN, G. **Isolation, characterization and production of phytase from endophytic fungus its application for feed**. Pakistan Journal of Nutrition 9(5): 471-474, 2010.

- MAYERHOFF, Z.D.V.L., ROBERTO, I.C., FRANCO, T.T. **Purification of xylose reductase from *Candida mogii* in aqueous two-phase systems.** Biochemical Engineering Journal (18):217-223, 2004.
- MAZZOLA, P.G., LOPES, A.M., HASMANN, F.A., JOZALA, A.F., PENNA, T.C.V., MAGALHÃES, P.O., RANGEL-YAGUI, C.O., PESSOA JR., A. **Liquid-liquid extraction of biomolecules: an overview and update of the main techniques.** Journal of Chemical Technology and Biotechnology (83):143-157, 2008.
- MEHRNOUSH, A., MUSTAFA, S., YAZID, A.M.M. **'Heat-Treatment Aqueous Two Phase System' for Purification of Serine Protease from Kesinai (*Streblus Asper*) Leaves.** Molecules 16: 10202-10213, 2011.
- MEHRNOUSH A., MUSTAFA, S., SARKER, M.I., YAZID, A.M.M. **Optimization of Serine Protease Purification from Mango (*Mangifera Indica* cv. Chokanan) Peel in Polyethylene Glycol/Dextran Aqueous Two Phase System.** Int J Mol Sci 13: 3636-3649, 2012.
- META, A., NAKATAKE, H., IMAMURA, T., NOZAKI, C., SUGIMURA, K. **High-yield production and characterization of biologically active recombinant aprotinin expressed in *Saccharomyces cerevisiae*.** Protein Expres. Purif., v.66, p.22-27, 2009.
- MOHAMADI, H., Omidinia, E., DINARVAND, R. **Evaluation of Recombinant Phenylalanine Dehydrogenase Behavior in Aqueous Two-Phase Partitioning.** Process Biochem 42: 1296-1301, 2007.
- MONTEIRO, P.S. **Production and biochemical characterization of *Rhizopus stolonifer* and *Aspergillus niger* UFV-1 phytases and their applications in animal feed.** Doctoral thesis. Federal University of Viçosa, Minas Gerais, 2011.
- NAGASHIRO, C. **Enzymes in poultry nutrition.** In: CONFERENCIA APINCO, 2007, Santos, SP. Proceedings. Santos, FACTA, 2007. p.307-327.
- NALINANON; S., BENJAKUL, S., VISESSANGUAN, W., KISHIMURA, H. **Partitioning of Protease from Stomach of Albacore Tuna (*Thunnus alalunga*) by Aqueous-Two Phase Systems.** Process Biochemistry (44):471-476, 2009.
- NASCIMENTO, K.S., ROSA, P.A.J., NASCIMENTO, K.S., CAVADAB, B.S., AZEVEDO, A.M.; AIRES-BARROS, M.R. **Partitioning and recovery of *Canavalia brasiliensis* lectin by aqueous two-phase systems using design of experiments methodology.** Separation and Purification Technology (75):48-54, 2010.
- NAVES, L.P.; RODRIGUES, P.B.; BERTECHINI, A.G.; LIMA, E.M.C.; TEIXEIRA, L.V.; ALVARENGA, R.R.; NARDELLI, N.B.S.; OLIVEIRA, D.H.; OLIVEIRA, M.H. **Phosphorus reduction in broiler diets based on phytase equivalence values.** Pesq. Agropec. Brasília, 49, n.1, p.71-77, 2014. DOI: 10.1590/S0100-204X2014000100010.
- NG, H. S., OOI, C. W., MOKHTAR, M. N., SHOW, P. L., ARIFF, A., TAN, J. S., LING, T.C. **Extractive bioconversion of cyclodextrins by *Bacillus cereus* cyclodextrin glycosyltransferase in aqueous two-phase system.** Bioresource Technology, v. 142, p. 723-726, 2013.
- NITSAWANG, S., HATTI-KAUL, R., KANASAWUD, P. **Purification of Papain from *Carica Papaya* Latex: Aqueous Two-Phase Extraction versus Two-Step Salt Precipitation.** Enzyme Microb Tech 39: 1103-1107, 2006.

- NOVAKI, L. **Production, purification and partial characterization of invertase obtained by solid-state fermentation of soybeans with *Aspergillus caseiellus***. Master's thesis. State University of Western Paraná, Center for Engineering and Exact Sciences, Paraná, 2009.
- OOI, C.W., TEY, B.T., HII, S.L., KAMAL, S.M.M., LAN, J.C.W. **Purification of Lipase Derived from *Burkholderia pseudomallei* with Alcohol/Salt-Based Aqueous Two-Phase Systems**. *Process Biochem* 44: 1083-1087, 2009.
- OOI, C.W., HII, S.L., KAMAL, S.M.M.K., ARIFF, A., LING, T.C. **Extractive fermentation on using aqueous two-phase systems for integrated production and purification of extracellular lipase derived from *Burkholderia pseudomallei***. *Process Biochemistry* (46):68-73, 2011.
- OLIVEIRA, G.G.G., SILVA, D.P., ROBERTO, I.C., VITOLO, M., PESSOA-JUNIOR, A. **Partition behavior and partial purification of hexokinase in aqueous two-phase polyethylene glycol/citrate systems**. *Applied Biochemistry and Biotechnology* (105):787-797, 2003.
- OLIVEIRA, A.C. **Estudo da produção de poligalacturonase por fermentação em estado sólido utilizando residuo agroindustrial de manga (*Mangifera indica* L.)**. Master's thesis, Universidade Estadual do Sudoeste da Bahia - UESB, 2013.
- OLIVEIRA, L.A., SARUBBO, L.A., PORTO, A.L.F., LIMA-FILHO, J.L., CAMPOS TAKAKI, G.M., TAMBOURGI, E.B. **Physical and rheological characterization of polyethylene glycol-cashew-nut tree gum aqueous two-phase systems**. *Journal of Chromatography B* (766):27-36, 2001.
- OSTANIN, K., HARMS, E.H., STEVIS, P.E., ZHOU, M., VAN ETEN, R.L. **Overexpression, site-directed mutagenesis and mechanism of *Escherichia coli* acid phosphatase**. *J. Biol. Chem.*, v. 267, p. 22830-22836, 1992.
- PANDEY, A., SZKACKS, G., SOCCOL, C.R., RODRIGUEZ-LEON, J.A., SOCCOL VT. **Production, purification and properties of microbial phytases**. *Bioresource Technol.* 77: 203-214, 2001.
- PASAMONTES, L., HAIKER, M., WYSS, M., TESSIER, M., LOON, A.P.G.M. **Gene cloning, purification, and characterization of a heat-stable phytase from the fungus *Aspergillus fumigatus***. *Appl. Environ. Microb.*, v.63, p.1696-1700, 1997.
- PESSOA JR., A., KOLIKIAN, B.V. **Purificação de Produtos Biotecnológicos**, Manole: São Paulo, 2005.
- PORTO, T.S. **Extraction of epsilon pro-toxin from a *Clostridium perfringens* protease in aqueous two-phase systems using PEG/citrate**. Master's thesis. University of São Paulo, Faculty of Pharmaceutical Sciences, São Paulo, 2004.
- PUGH, R. **The scope for enzymes in commercial feed formulations**. *Proceedings of the 9th Annual Symposium on Biotechnology in the Feed Industry*, p. 369-372, 1993.
- RAMACHANDRAN, S., ROOPESH, K., NAMPOOTHIRI, K.M., SZAKACS, G., PANDEY, A. **Mixed substrate fermentation for the production of phytase by *Rhizopus* spp. using oilcakes as substrates**. *Process Biochem*, 40:1749-1754, 2005.
- REGINA, R. **Animal nutrition, main ingredients and management of poultry and pigs**. 1st edition. São Paulo. Cargill Foundation, 413 p., 2010.

REIS, A. P. **Purification, biochemical characterization and biotechnological applications of α -galactosidases from *Aspergillus terreus***. Master's thesis. Federal University of Viçosa, 108 p., 2007.

RICHARDS, J., DIBNER, J. **Organic trace minerals are not all equally effective**. World Poultry, Doetinchem, v. 21, p. 17-19, 2005.

REIS, A. P. **Purification, biochemical characterization and biotechnological applications of α -galactosidases from *Aspergillus terreus***. Master's thesis. Federal University of Viçosa, 108 p., 2007.

RIES, E.F. **Study of the production, characterization and application of a new phytase from *Saccharomyces cerevisiae***. PhD thesis, State University of Campinas, Campinas, 2010.

RAVINDRAN, V., P. H. SELLE, G. RAVINDRAN, P. C. H. MOREL, A. K. KIES, W. L. BRYDEN. **Microbial phytase improves performance, apparent metabolizable energy, and ileal amino acid digestibility of broilers fed a lysine-deficient diet**. Poultry Sci., 80:338-344, 2001.

ROCHA, C. **Impact of different feeds on intestinal morphological structure and nutrient digestibility in chickens**. Doctoral thesis. Postgraduate course in veterinary sciences. Federal University of Paraná, 168 p. 2014.

ROOPESH, K.; RAMACHANDRAN, S.; NAMPOOTHIRI, M.; SZAKACS, G.; PANDEY, A. **Comparison of phytase production on wheat bran and oilcakes in solidstate fermentation by *Mucor racemosus***. Bioresource Technology 97(3):506-511, 2006.

ROSA, P.A.J., AZEVEDO, A.M., AIRES-BARROS, M.R. **Application of central composite design to the optimization of aqueous two-phase extraction of human antibodies**. Journal of Chromatography A (1141): 50-60, 2007.

RUTHERFURD, S. M., T. K. CHUNG, D. V. THOMAS, M. L. ZOU, AND P. J. MOUGHAN. **Effect of a novel phytase on growth performance, apparent metabolizable energy, and the availability of minerals and amino acids in a low-phosphorus corn-soybean meal diet for broilers**. Poultry Sci. 91:1118-1127, 2012.

SAKOMURA, N.K., SILVA, J.H.V., COSTA, F.G.P., FERNANDES, G.P.C., FERNANDES, J.B.K., HAUSCHILD, L. **Nutrição de Não Ruminantes**. Jaboticabal: Ed. FUNEP, 2014.

SALMON, D.N.X. **Development of a bioprocess for the production, characterization and recovery of phytase from *Schizophyllum commune* obtained by solid-state fermentation**. Master's dissertation. Federal University of Paraná, Curitiba, 2011.

SANO, K., FUKUHARA, H., NAKAMURA, Y. **Phytase of the yeast *Arxula adenivorans***. Biotechnol. Lett., v.21, p.33-38, 1999.

SEGUEILHA, L., LAMBRECHTS, C., BOZE, H., MOULIN, G., GALZY, P. **Purification and properties of the phytase from *Schwanniomyces castelli***. J. Ferment. Bioeng., v.74,p.7-11, 1992

SELLE, P.H., RAVINDRAN, V. **Microbial phytase in poultry nutrition**. Anim. Feed Sci. Tech.135: 1-41, 2006.

- SELLE, P.H., WALKER, A.R., BRYDEN, W.L. **Total and phytate-phosphorus contents and phytase activity of Australian-sourced feed ingredients for pigs and poultry.** Australian Journal of Experimental Agriculture, v.43, p. 475-479, 2003.
- SHANG, Q.K., LI, W., JIA, Q., LI, D.Q. **Partitioning of behavior of amino acids in aqueous two phase systems containing polyethylene glycol and phosphate buffer.** Fluid Phase Equilibria, v. 219, p. 195-203, 2004.
- SHANKAR, S.K., MULIMANI, V.H. **α -Galactosidase production by *Aspergillus oryzae* in solid-state fermentation.** Bioresource Technology (98):958-961, 2007.
- SHIEH, T.R., WARE, J.H. **Survey of microorganisms for the production of extracellular phytase.** Appl. Microbiol., p.1348-1351, 1968.
- SHIMIZU, M. **Purification and characterization of phytase and acid phosphatase produced by *Aspergillus oryzae* K1.** Biosci., Biotechnol., Biochem., v. 57, p.1354-1365, 1993.
- SILVA, Y.L. **Reduction of protein and phosphorus levels in feed with phytase for broilers: performance, digestibility and nutrient excretion.** Lavras: Federal University of Lavras, 2004. 228p. Thesis (Doctorate in Zootechnics), 2004.
- SILVA, L.M., GERALDO, A., VIEIRA FILHO, J.A. **Association of carbohydrase and phytase in diets for semi-heavy layers.** Acta Scientiarum, v.34, n.3, p.253-258, 2012.
- SILVERSIDES, .FG., HRUBY, M. **Feed formulation using phytase in laying hen diets.** Journal of Applied Poultry Research, v. 18, n. 1, p. 15-22, 2009.
- SIMON, L.; OTTO, H. **Aqueous Two-phase extraction - a case study in process analysis and control.** AIChE Annual Meeting, Cincinnati, OH., p. 237, 2005.
- SLIVINSKI, C.T. **Production, partial purification and biochemical characterization of glucoamylase from *Aspergillus niger* obtained by solid-state fermentation.** Master's thesis. State University of Ponta Grossa, 128p., 2007.
- SLOMINSKI, B.A. **Recent advances in research on enzymes for poultry diets.** Poultry Science, v.90, p.20132023, 2011. DOI: 10.3382/ps.2011-01372.
- SOETAN, K.O.; OYEWOLE, O.E. **The need for adequate processing to reduce the anti-nutritional factors in plants used for human food and animal feeds - a review.** African Journal of Food Science, Victoria Island, v.4, n.5, p. 200-222, 2010.
- SOETAN, K.O., OYEKUNLE, M.A., AIYELAAGBE, O.O., FAFUNSO, M.A. **Evaluation of the antimicrobial activity of saponins extract of *Sorghum bicolor* L. Moench.** Afr. J. Biotechnol., 5 (23):2405-2407, 2010.
- SORIO, A., BRAGA, F., LIMA, F., MAIA, G., RASI, L., DALLONDER, L.O. **Technical and economic feasibility study for the implementation of a national production park for additives in the livestock feed industry.** Méritos Editora, 2012.
- SOUZA, F.A.S.D. **Production, partial purification by Extractive Fermentation in a Two-Phase Aqueous System (SDFA) and biochemical characterization of fibrinolytic enzymes from *Bacillus amyloliquefaciens* UFPEDA.** Doctoral thesis. Federal University of Pernambuco, 2014.

SPIER, M.R., SCHEIDT, G.N., PORTELLA, A.C., RODRÍGUEZ-LEÓN, J.A., WOICIECHOWSKI, A.L., GREINER, R., SOCCOL, C.R. **Increase in Phytase Synthesis During Citric Pulp Fermentation.** Chemical Engineering Communications, v. 198, p. 286 - 297, 2011.

SUZUKI, U., YOSHIMURA, K., TAKASHI, M. **Ueber ein Enzym, "Phytase" das "Anhydro-Oxymwthylen diphosphorsaure" Spaltet.** Tokyo Imper. Univ. Coll. Bull., v.7, p.503-512, 1908.

TRABULSI, L.R., ALTERTHUM, F., GOMPERTZ, O. F., CANDEIAS, J.R. **Microbiologia**, 3ed. São Paulo: Atheneu, 1999.

UENOJO, M.,; PASTORE, G.M. **Pectinases: industrial applications and perspectives.** Chem. Nova, vol.30 no.2, 2007.

ULLAH, A.H.L., GIBSON, D.M. **Purification and characterization of acid phosphatase from cotyledons of germinating soybean seeds.** Arch. Biochem., v.260, p.514-520, 1986.

VASSILEV, N., VASSILEVA, M., BRAVO, V., FERNANDEZ-SERRANO, M., NIKOLAEVA, I. **Simultaneous phytase production and rock phosphate solubilization by *Aspergillus niger* grown on dry olive wastes.** Ind. Crop. Prod., v.26, p.332-336, 2007.

VATS, P., BANERJEE, U.C. **Production studies and catalytic properties of phytases (myoinositolhexakisphosphate phosphohydrolases): an overview.** Enzyme Microb. Tech. 35:3-14, 2004.

VATS, P., BANERJEE, U.C. **Catalytic characterization of phytase (myoinosylhexakisphosphate phosphohydrolase) from *Aspergillus niger* van Teighem: Glycosylation pattern, kinetics and molecular properties.** Enz. Microb. Technol., v.39, p.596-600, 2006.

VALLE, F.L.P. **Use of phytase in commercial diets for broilers containing or not an ingredient of animal origin.** Master's dissertation, Federal University of Paraná. Curitiba, 2010.

VOHRA, A., SATYANARAYANA, T. **Phytase production by the yeast *Pichia anomala*.** Biotechnol. Lett., v.13, p.551-554, 2002.

YIN, Q.Q., ZHENG, Q.H., KANG, X.T. **Biochemical characteristics of phytases from fungi and the transformed microorganism.** Animal Feed Science and Technology, v.132, p.341-350, 2007.

XIANG, T., LIU, Q., DEACON, A.M., KOSHY, M.K., LEI, X.G., HAO, Q., THIEL, D.J. **Crystal structure of a heat-resilient phytase from *Aspergillus fumigatus*, carrying a phosphorylated histidine.** J. Mol. Biol. 339:437-445, 2004.

ZHOU, Y., HU, C., WANG, N., ZHANG, W., YU, X. **Purification of Porcine Pancreatic Lipase by Aqueous Two-Phase Systems of Polyethylene Glycol and Potassium Phosphate.** J Chromatogr B, 926: 77- 82, 2013.