

Magnetic field morphology in nearby molecular clouds as revealed by starlight and submillimetre polarization

J. D. Soler^{1,2}, F. Alves³, F. Boulanger², A. Bracco¹, E. Falgarone^{4,5,6}, G. A. P. Franco⁷, V. Guillet², P. Hennebelle¹, F. Levrier^{4,5,6}, P. G. Martin⁸, and M.-A. Miville-Deschênes²

¹ Laboratoire AIM, Paris-Saclay, CEA/IRFU/SAP – CNRS – Université Paris Diderot, 91191 Gif-sur-Yvette Cedex, France
e-mail: juan-diego.soler-pulido@cea.fr

² Institut d'Astrophysique Spatiale, CNRS, UMR 8617, Université Paris-Sud 11, Bâtiment 121, 91405 Orsay, France

³ Max-Planck-Institut für extraterrestrische Physik, Giessenbachstrasse 1, 85748 Garching, Germany

⁴ LERMA, Observatoire de Paris, PSL Research University, CNRS, UMR 8112, 75014 Paris, France

⁵ Sorbonne Universités, UPMC Université Paris 6, UMR 8112, LERMA, 75005 Paris, France

⁶ LRA, ENS Paris, 24 rue Lhomond, 75231 Paris, Cedex 05, France

⁷ Departamento de Física-ICEx-UFMG, Caixa Postal 702, 30.123-970 Belo Horizonte, Brazil

⁸ CITA, University of Toronto, 60 St. George St., Toronto, ON M5S 3H8, Canada

Received 25 May 2016 / Accepted 31 August 2016

ABSTRACT

Within four nearby ($d < 160$ pc) molecular clouds, we statistically evaluated the structure of the interstellar magnetic field, projected on the plane of the sky and integrated along the line of sight, as inferred from the polarized thermal emission of Galactic dust observed by *Planck* at 353 GHz and from the optical and near-infrared polarization of background starlight. We compared the dispersion of the field orientation directly in vicinities with an area equivalent to that subtended by the *Planck* effective beam at 353 GHz ($10'$) and using the second-order structure functions of the field orientation angles. We found that the average dispersion of the starlight-inferred field orientations within $10'$ -diameter vicinities is less than 20° , and that at these scales the mean field orientation is on average within 5° of that inferred from the submillimetre polarization observations in the considered regions. We also found that the dispersion of starlight polarization orientations and the polarization fractions within these vicinities are well reproduced by a Gaussian model of the turbulent structure of the magnetic field, in agreement with the findings reported by the Planck Collaboration at scales $\ell > 10'$ and for comparable column densities. At scales $\ell > 10'$, we found differences of up to 14.7° between the second-order structure functions obtained from starlight and submillimetre polarization observations in the same positions in the plane of the sky, but comparison with a Gaussian model of the turbulent structure of the magnetic field indicates that these differences are small and are consistent with the difference in angular resolution between both techniques. The differences between the second-order structure functions calculated with each technique suggests that the increase in the angular resolution obtained with the starlight polarization observations does not introduce significant corrections to the dispersion of polarization orientations used in the calculation of the molecular-cloud-scale magnetic field strengths reported in previous studies by the Planck Collaboration.

Key words. ISM: general – dust, extinction – ISM: magnetic fields – ISM: clouds – infrared: ISM – submillimeter: ISM

1. Introduction

Polarization observations, in extinction from background stars and emission from dust, reveal the orientation of the interstellar magnetic field averaged along the line of sight (LOS) and projected on the plane of the sky ($\langle \hat{\mathbf{B}}_\perp \rangle$, Hiltner 1949; Davis & Greenstein 1951; Hildebrand 1988; Planck Collaboration Int. XIX 2015). These observations constitute a crucial dataset to study the role of the magnetic field in the formation and evolution of molecular clouds (MCs) and their substructures, from filaments to cores and eventually to stars (Bergin & Tafalla 2007; McKee & Ostriker 2007; Crutcher 2012).

Recent observations by *Planck*¹ (Planck Collaboration I 2016) have produced the first all-sky map of the polarized

emission from dust at submillimetre wavelengths. Compared with earlier ground-based and balloon-borne observations, this survey is an immense step forward in sensitivity, coverage, and statistical significance.

The studies by the Planck Collaboration include an overview of polarized thermal emission from Galactic dust (Planck Collaboration Int. XIX 2015), which reported polarization fractions up to 20% at low total gas column density (N_{H}), decreasing systematically with increasing N_{H} to a low plateau for regions with $N_{\text{H}} > 10^{22} \text{ cm}^{-2}$.

Planck Collaboration Int. XX (2015) presents a comparison of this polarized thermal emission towards molecular clouds with results from simulations of magnetohydrodynamic (MHD) turbulence, identifying an anti-correlation between the polarization fraction and the dispersion of the polarization angle that can be understood in terms of the turbulent structure of the magnetic field.

Over most of the sky, Planck Collaboration Int. XXXII (2016) analyses the relative orientation between density structures and polarization, revealing that most of the elongated structures (filaments or ridges) are predominantly aligned with the

¹ *Planck* (<http://www.esa.int/Planck>) is a project of the European Space Agency (ESA) with instruments provided by two scientific consortia funded by ESA member states (in particular the lead countries France and Italy), with contributions from NASA (USA) and telescope reflectors provided by a collaboration between ESA and a scientific consortium led and funded by Denmark.

magnetic field measured on the structures. This statistical trend becomes less striking for increasing column density.

At the scales of MCs, [Planck Collaboration Int. XXXIII \(2016\)](#) studies the polarization properties of three nearby filaments, showing by geometrical modeling that the magnetic field in those representative regions has a well-defined mean direction that is different from the field orientation in the surroundings. At the same scales, [Planck Collaboration Int. XXXV \(2016\)](#) shows that the relative orientation between the column density structures and $\langle \hat{\mathbf{B}}_{\perp} \rangle$ in ten nearby ($d < 450$ pc) MCs is consistent with what can be derived from simulations of trans- or sub-Alfvénic magnetohydrodynamic turbulence in molecular clouds.

Given the 10' effective angular resolution of the 353 GHz polarization observations, *Planck* samples $\langle \hat{\mathbf{B}}_{\perp} \rangle$ in physical scales down to 0.4 pc in the nearest MC in the present work (Taurus, at 135 pc, [Schlafly et al. 2014](#)). The nominal resolution of the *Planck* 353 GHz band is 4'.8, but [Planck Collaboration Int. XXXV \(2016\)](#) convolve these observations with a Gaussian beam to increase the signal-to-noise ratio (S/N) towards the studied regions. In contrast, starlight polarization observations provide estimates of $\langle \hat{\mathbf{B}}_{\perp} \rangle$ down to scales comparable to the angular diameter of stars. Although those observations are limited to lines of sight with moderate dust extinction towards background stars, they provide insight into the structure of the field at scales that are not accessible to *Planck*. Previous works by the *Planck* Collaboration used starlight polarization observations to study the properties of dust grains ([Planck Collaboration Int. XXI 2015](#)), but there was no study focused on characterizing the $\langle \hat{\mathbf{B}}_{\perp} \rangle$ structure within the *Planck* beam and towards MCs.

In the present work, we compared the magnetic field orientations inferred from the observations of optical and near-infrared (NIR) starlight polarization, $\langle \hat{\mathbf{B}}_{\perp}^{\text{star}} \rangle$, and those derived from the *Planck* 353 GHz polarization observations, $\langle \hat{\mathbf{B}}_{\perp}^{\text{submm}} \rangle$, towards four nearby MCs, namely Taurus, Pipe nebula, Lupus I, and Musca. Given the difference in the angular resolution and LOS depth in each technique, we aimed to characterize the structure of the field within the *Planck* beam and evaluate the contribution of different portions of the LOS to the observed $\langle \hat{\mathbf{B}}_{\perp}^{\text{submm}} \rangle$. For that purpose, we have evaluated the dispersion of $\langle \hat{\mathbf{B}}_{\perp} \rangle$ orientations within 10' vicinities and compare the second-order structure functions of $\langle \hat{\mathbf{B}}_{\perp}^{\text{star}} \rangle$ and $\langle \hat{\mathbf{B}}_{\perp}^{\text{submm}} \rangle$ orientations ([Kobulnicky et al. 1994](#); [Falceta-Gonçalves et al. 2008](#); [Hildebrand et al. 2009](#)).

This paper is organized as follows. Section 2 introduces the *Planck* 353 GHz polarization maps, the N_{H} maps, and the starlight polarization observations. Section 3 introduces the Gaussian polarization models that we used to evaluate the results the analysis. Section 4 describes the vicinity and the $S_2(\ell)$ statistical analyses performed to compare submillimetre and starlight polarization data. In Sect. 5 we discuss the results of the comparison between both techniques and Sect. 6 summarizes the main results. Finally, Appendix A adds a commentary on the trends in relative orientations between $\langle \hat{\mathbf{B}}_{\perp}^{\text{star}} \rangle$ and N_{H} structures.

2. Data

2.1. Thermal dust polarization

Over the whole sky, *Planck* observed linearly polarized emission (Stokes Q and U) in seven frequency bands from 30 to 353 GHz ([Planck Collaboration I 2014](#)). In this study, we used data from

the High Frequency Instrument (HFI, [Lamarre et al. 2010](#)) at 353 GHz, the highest frequency band that is sensitive to polarization. Towards MCs, the contribution of the cosmic microwave background (CMB) polarized emission is negligible at 353 GHz, making this *Planck* map the best suited one to study the spatial structure of dust polarization ([Planck Collaboration Int. XIX 2015](#); [Planck Collaboration Int. XX 2015](#)).

We used the Stokes Q and U maps and the associated noise maps made from five independent consecutive sky surveys of the *Planck* cryogenic mission, which together correspond to the *Planck* 2015 public data release² ([Planck Collaboration I 2016](#)). The whole-sky 353 GHz maps of Q , U , their respective variances σ_Q^2 , σ_U^2 , and their covariance σ_{QU} are initially at 4'.8 resolution in HEALPIX format³ ([Górski et al. 2005](#)) with a pixelization at $N_{\text{side}} = 2048$, which corresponds to an effective pixel size of 1'.7. To increase the signal-to-noise ratio (S/N) of extended emission, we smoothed all the maps to 10' resolution using a Gaussian approximation to the *Planck* beam and the smoothing procedures for the covariance matrix described in [Planck Collaboration Int. XIX \(2015\)](#).

The maps of the individual regions are projected and resampled onto a Cartesian grid with the gnomonic projection procedure described in [Paradis et al. \(2012\)](#). The present analysis is performed on these projected maps. The selected regions are small enough, and are located at sufficiently low Galactic latitudes that this projection does not impact significantly on our study.

The Stokes parameters provided by *Planck* data follow the HEALPIX angle convention ([Górski et al. 2005](#)), where the polarization angle is measured from the local direction to the north Galactic pole with positive values increasing towards the west (decreasing Galactic longitude l). In order to compare these values with starlight polarization observations, we calculated the polarization angle ϕ using the IAU convention ([Hamaker & Bregman 1996](#)), where it is measured from the local direction to the north Galactic pole with positive values increasing towards the east (increasing Galactic longitude l). This corresponds to

$$\phi = 0.5 \arctan(-U, Q), \quad (1)$$

where the $\arctan(-U, Q)$ function is used to compute $\arctan(-U/Q)$ avoiding the π ambiguity.

For this study we assumed that the angle of optical/NIR starlight polarization, ϕ_{star} , is directly equal to the orientation ψ_{star} of $\langle \hat{\mathbf{B}}_{\perp} \rangle$, so that $\psi_{\text{star}} = \phi_{\text{star}}$. Likewise, we assumed that the submillimetre polarization is perpendicular to the orientation of the field, so its polarization angle ϕ_{submm} is related to the orientation of the field ψ_{submm} by $\psi_{\text{submm}} = \phi_{\text{submm}} + \pi/2$. We used this approximation, implicitly assuming that both polarization observations are homogeneously sampling the magnetic field along the LOS, but it is not necessarily the case. The observables in emission and extinction, the Stokes parameters Q and U , do not directly trace the magnetic field direction, but rather the density-weighted magnetic field orientation. Additionally, the alignment of the dust with the local magnetic field is not perfect in all environments ([Lazarian & Hoang 2007](#); [Andersson et al. 2015](#)). However, for the sake of comparison between the observed quantities in emission and extinction, the aforementioned approximation is sufficient to compare how both techniques are sampling the ISM.

² <http://pla.esac.esa.int/pla/>

³ <http://healpix.sf.net>

Table 1. Locations of the selected regions and properties of the starlight polarization observations.

Region	d^a [pc]	l [deg]	b [deg]	$\Delta l \times \Delta b$ [deg]	N_{star}^b	Band	$\min(p_{\text{star}}/\sigma_{p_{\text{star}}})$	Reference
Taurus	135	172.5	-14.5	9.0×9.0	287	H	3.0	Clemens et al. (2007)
.					474	Optical	5.0	Heiles (2000)
Pipe	145	0.0	5.0	8.0×8.0	9796	R	5.0	Franco et al. (2010)
Lupus I	140	339.0	16.0	6.0×6.0	1938	R	5.0	Franco & Alves (2015)
Musca	160	301.0	-9.0	6.0×6.0	2439	V	5.0	Pereyra & Magalhães (2004)

Notes. ^(a) Estimates of distances are from: Schlafly et al. (2014) for Taurus, Lupus I, and Musca; Alves & Franco (2007) for Pipe. ^(b) Number of stars after thresholding in S/N.

2.2. Column density

We used the dust optical depth at 353 GHz (τ_{353}) as a proxy for the total gas column density (N_{H}). The τ_{353} map was derived from the all-sky *Planck* intensity observations at 353, 545, and 857 GHz, and the IRAS observations at $100 \mu\text{m}$, through a modified black body spectrum fit, which also yielded maps of the dust temperature and of the dust opacity spectral index (Planck Collaboration XI 2014). The τ_{353} map, computed initially at $5'$ resolution, was smoothed to $10'$ to match the polarization maps. The errors resulting from smoothing the product τ_{353} map, rather than the underlying data and re-fitting, are negligible compared to the uncertainties in the dust opacity and do not significantly affect the results of this study.

To scale from τ_{353} to N_{H} , following Planck Collaboration XI (2014), we adopted the dust opacity,

$$\sigma_{353} = \tau_{353}/N_{\text{H}} = 1.2 \times 10^{-26} \text{ cm}^2. \quad (2)$$

Variations in dust opacity are present even in the diffuse ISM and the opacity decreases systematically by a factor of 2 from the denser to the diffuse ISM (Planck Collaboration XXIV 2011; Martin et al. 2012; Planck Collaboration XI 2014), but our results do not depend on this calibration.

2.3. Starlight polarization

In this analysis, we combined previously published starlight polarization measurements summarized in Table 1. We evaluated the observations in terms of their polarized intensity $P \equiv \sqrt{Q^2 + U^2}$, only selecting sources in these catalogs with a polarization S/N $P/\sigma_P \geq 5$, except for the H -band ($1.6 \mu\text{m}$) polarization observations towards Taurus, where we used all sources with $P/\sigma_P \geq 3$. These values of polarization S/N correspond to classical uncertainties in the orientation angle $\sigma_\psi < 5^\circ.7$ and $\sigma_\psi < 9^\circ.5$, and they guarantee that the polarization bias is negligible (Serkowski 1958; Naghizadeh-Khouei & Clarke 1993; Montier et al. 2015).

The optical data towards the Pipe nebula, Lupus I, and Musca were acquired with the 1.6 m and 0.6 m telescopes of the Observatório do Pico dos Dias (LNA/MCTI, Brazil). The observations were made using IAGPOL, a polarimetric unit consisting of a half-wave plate retarder followed by a calcite Savart prism and a filters wheel (Magalhaes et al. 1996). The field-of-view of these observations is around $10' \times 10'$. The data processing provides the reduced Stokes parameters, $q \equiv Q/I$ and $u \equiv U/I$; polarization fraction, $p_{\text{star}} \equiv \sqrt{q^2 + u^2}$; and polarization angle, ϕ_{star} , measured eastwards from the North Celestial Pole (in degrees) for each star. A detailed description of the polarimetric observations and the data processing can be found in (Franco et al. 2010)

for the Pipe nebula, (Franco & Alves 2015) for Lupus I, and (Pereyra & Magalhães 2004) for Musca.

Towards Taurus, the H -band polarization was observed with the *Mimir* instrument (Clemens et al. 2007) using the 1.8 m Perkins telescope of the Lowell Observatory. *Mimir* also contains a rotating half-wave plate and the field of view is the same as the optical observations. The H -band observations were centered on two subregions: a low-density field and a filamentary, high-density field. To cover scales larger than the size of the two subregions but smaller than their separation, we also included in this analysis 474 the catalog described in Heiles (2000), all with polarization S/N $P/\sigma_P \geq 5$.

3. Gaussian models of polarization

Throughout this work, we characterized our analysis tools using a series of Gaussian models of Stokes Q and U introduced in Planck Collaboration Int. XXXII (2016) and Planck Collaboration Int. XLIV (2016).

Each model is built from 3D vectors \mathbf{B}_{M} with a Gaussian distribution of orientations about a mean direction $\mathbf{B}_{\text{M}0}$. The three components of \mathbf{B}_{M} are independent realizations of a Gaussian field on a full-sky HEALPIX grid, with an angular power spectrum having a power law, $P(k) \propto k^{\alpha_{\text{M}}}$, to which we added the components of $\mathbf{B}_{\text{M}0}$. These realizations are computed with the procedure SYNFAST of HEALPIX at $N_{\text{side}} = 2048$, which corresponds to an effective pixel size of $1'.72$.

These models are characterized by the ratio f_{M} between the standard deviation of $|\mathbf{B}_{\text{M}}|$ and $|\mathbf{B}_{\text{M}0}|$ and the values of the spectral index, α_{M} . The ratio f_{M} determines the amplitude of the scatter of \mathbf{B}_{M} with respect to $\mathbf{B}_{\text{M}0}$, while the spectral index α_{M} controls the correlation of the \mathbf{B}_{M} orientations across the sky. The distribution function of angles between \mathbf{B}_{M} and $\mathbf{B}_{\text{M}0}$ per solid angle unit is close to Gaussian with a standard deviation, σ_{M} , that increases from $9^\circ.7$ to $29^\circ.5$ and 38° for $f_{\text{M}} = 0.3, 1.0$ and 1.5 , respectively.

For each model, we computed maps of the projections of \mathbf{B}_{M} and $\mathbf{B}_{\text{M}0}$ onto the sky with respect to the local direction of the north Galactic pole, ψ_{M} and $\psi_{\text{M}0}$, respectively. Subsequently, we computed Stokes $Q_{\text{M}} \equiv \sin^2 \psi_{\text{M}} - \cos^2 \psi_{\text{M}}$ and $U_{\text{M}} \equiv 2 \sin \psi_{\text{M}} \cos \psi_{\text{M}}$, and projected them onto a Cartesian-grid map using the procedure described in Sect. 2.1. These models do not include any density structure and consequently there is no information in the Stokes I_{M} .

We chose four models corresponding to the combinations of $\alpha_{\text{M}} = -2.5$ and -1.5 , and $f_{\text{M}} = 1.0$ and 0.5 . We projected them towards a $6^\circ \times 6^\circ$ region where the inclination of $\mathbf{B}_{\text{M}0}$ with respect to the plane of the sky is $\gamma = 20^\circ$. Given that the mean field inclination in the studied regions is unknown, this selection of γ

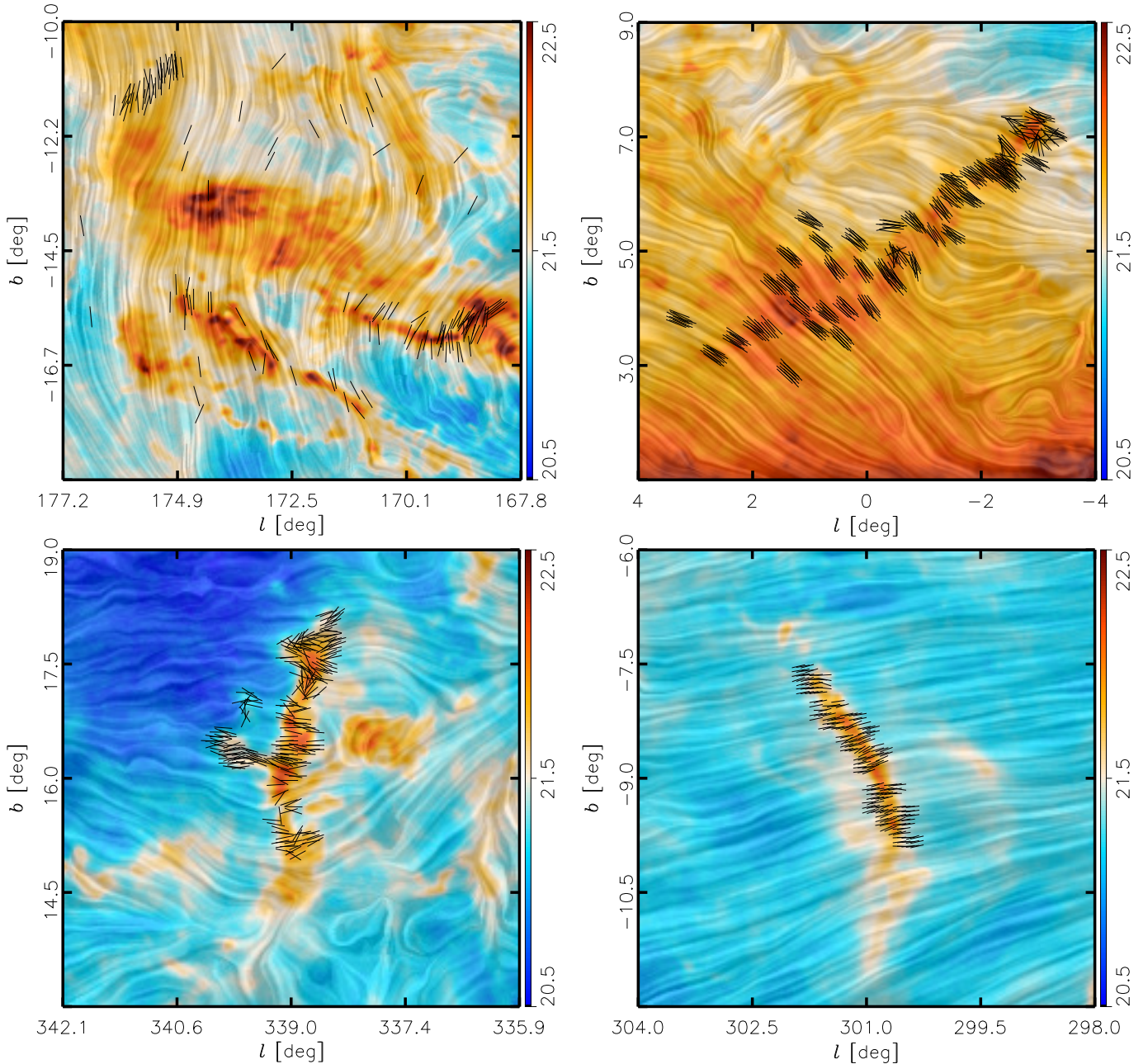


Fig. 1. Magnetic field orientations inferred from submillimetre emission and visible or NIR extinction polarization observations towards the Taurus (*top left*), Pipe (*top right*), Lupus I (*bottom left*), and Musca (*bottom right*) molecular clouds. The colors represent the total gas column density in logarithmic scale. The drapery pattern, produced using the line integral convolution (LIC, Cabral & Leedom 1993), indicates the magnetic field orientation, orthogonal to the orientation of the submillimetre polarization. The black pseudo-vectors indicate the magnetic field orientation from starlight polarization in the corresponding lines-of-sight. Each pseudo-vector represents the average field orientation inferred from the stars within 3/5-diameter vicinities.

is arbitrary, but it allows to illustrate the effect of the magnetic field structure in the observed polarization.

We analyzed each one of these projected models at two angular resolutions, 10' and 2', aiming to characterize one of the differences between the starlight and the submillimetre observations. In reality the angular resolution of each starlight polarization observation is comparable to the size of the star, which is of the order of fractions of an arc-second. However, reproducing such a large dynamic range, between the size of the stars and the size of the *Planck* beam, is unpractical and unnecessary given the fact that we considered a simple model, where most of the structure is in the largest scales.

4. Analysis

The spatial distribution of ψ_{star} and ψ_{submm} towards the four selected regions is presented in Fig. 1. The former is shown as a set of uniform length pseudo-vectors representing the average field orientation inferred from the stars within 3/5-diameter vicinities. The latter is shown as a drapery pattern, produced from the raw *Planck* 353 GHz observations using the line integral convolution (LIC, Cabral & Leedom 1993), overlaid on the corresponding N_{H} map.

In order to quantitatively compare both types of observations, we computed the mean and the dispersion of starlight polarization orientations and polarized fractions within an area

Table 2. Field dispersion within 10' vicinities.

Region	$\bar{\psi}_{\text{star}} - \bar{\psi}_{\text{submm}}$			$\mathcal{S}_{\psi_{\text{star}}}$		
	Mean [deg]	P_{85}^a [deg]	P_{95}^a [deg]	Mean [deg]	Median [deg]	Std. Dev. [deg]
Taurus	-0.2	12.0	16.6	10.4	9.5	6.1
Pipe	1.1	6.9	12.4	7.5	6.0	5.3
Lupus I	4.4	10.8	15.2	19.0	15.2	9.9
Musca	1.5	2.7	3.7	6.2	6.1	1.0

Notes. ^(a) Percentile values of $|\bar{\psi}_{\text{submm}} - \bar{\psi}_{\text{star}}|$.

identical to that of the submillimetre beam. Then, we computed the structure function of the magnetic field orientations to characterize and compared the field structures sampled by each type of observations across multiple scales in each region. We applied this analysis to both the observations and the Gaussian polarization models introduced in Sect. 3.

4.1. Structure of $\langle \hat{\mathbf{B}}_{\perp} \rangle$ within the *Planck* beam

Towards each studied region, we identified a series of vicinities center on each of the selected stars and with the same diameter, $d = 10'$, as the *Planck* beam. For each vicinity containing more than three stars, we evaluated the dispersion of the starlight-inferred magnetic field orientations, $\mathcal{S}_{\psi_{\text{star}}}$, the difference between the mean field orientations inferred from starlight polarization and *Planck* 353 GHz observations, $|\bar{\psi}_{\text{star}} - \bar{\psi}_{\text{submm}}|$, and the ratio between the dispersion and the mean value of the starlight polarization fraction, $\mathcal{S}_{p_{\text{star}}}/p_{\text{star}}$.

4.1.1. Magnetic field orientation within the *Planck* beam

We computed the mean magnetic field orientation in a given vicinity

$$\bar{\psi}_{\text{star}} = \frac{1}{N} \sum_{i=1}^N \psi_{\text{star}}^{(i)}, \quad (3)$$

and its dispersion

$$\mathcal{S}_{\psi_{\text{star}}} = \left(\frac{1}{N-1} \sum_{i=1}^N (\bar{\psi}_{\text{star}} - \psi_{\text{star}}^{(i)})^2 \right)^{1/2}, \quad (4)$$

where N is the number of stars in that vicinity. We used the notation $\mathcal{S}_{\psi_{\text{star}}}$ to avoid confusion with $\sigma_{\psi_{\text{star}}}$, which is the uncertainty on the orientation angle ψ_{star} . The quantity $\bar{\psi}_{\text{star}} - \psi_{\text{star}}^{(i)}$ was evaluated considering the periodicity of the angles by using

$$\bar{\psi}_{\text{star}} - \psi_{\text{star}}^{(i)} = \frac{1}{2} \arctan \left(q_{\text{star}}^{(i)} \bar{u}_{\text{star}} - \bar{q}_{\text{star}} u_{\text{star}}^{(i)}, q_{\text{star}}^{(i)} \bar{q}_{\text{star}} + u_{\text{star}}^{(i)} \bar{u}_{\text{star}} \right), \quad (5)$$

where $q_{\text{star}}^{(i)}$ and $u_{\text{star}}^{(i)}$ are the values of the reduced Stokes parameters corresponding to the polarization observation of the i th star, while \bar{q}_{star} and \bar{u}_{star} are the averages of these quantities computed over all the stars in the vicinity, which correspond to $\bar{\psi}_{\text{star}}$ when the polarization bias is small.

We computed the difference between the mean orientation of the field derived from starlight and submillimetre by using

$$\bar{\psi}_{\text{star}} - \bar{\psi}_{\text{submm}} = \frac{1}{2} \arctan \left(\bar{Q}_{\text{submm}} \bar{u}_{\text{star}} - \bar{q}_{\text{star}} \bar{U}_{\text{submm}}, \bar{Q}_{\text{submm}} \bar{q}_{\text{star}} + \bar{U}_{\text{submm}} \bar{u}_{\text{star}} \right), \quad (6)$$

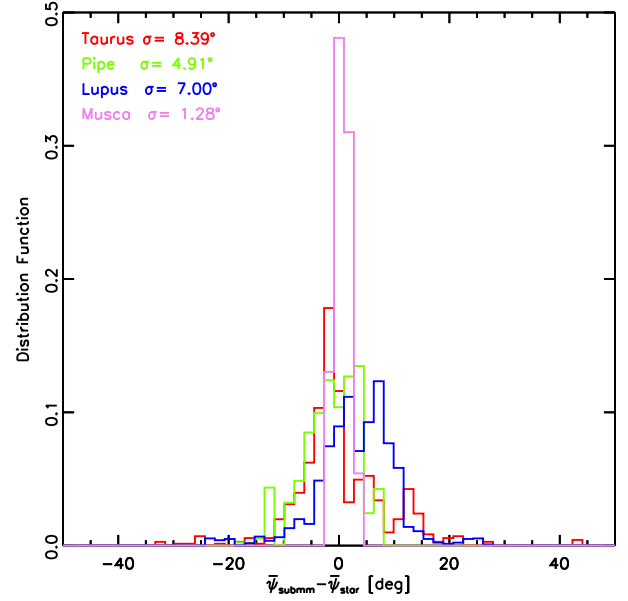


Fig. 2. Distributions of the differences $\bar{\psi}_{\text{submm}} - \bar{\psi}_{\text{star}}$ between the mean orientation of $\langle \hat{\mathbf{B}}_{\perp}^{\text{submm}} \rangle$ and $\langle \hat{\mathbf{B}}_{\perp} \rangle$ within each 10' vicinity, for each field. The dispersions σ of the histograms are given in the top left corner.

where \bar{Q}_{submm} and \bar{U}_{submm} are the mean values of the *Planck* 353 GHz Stokes parameters within the vicinity. The distributions of $\bar{\psi}_{\text{star}} - \bar{\psi}_{\text{submm}}$ towards each region are shown in Fig. 2.

We compared the estimated values of $|\bar{\psi}_{\text{star}} - \bar{\psi}_{\text{submm}}|$ with the dispersion of starlight-inferred magnetic field orientations, $\mathcal{S}_{\psi_{\text{star}}}$, within each 10' vicinities in Fig. 3. The parameters that describe the distributions of $\mathcal{S}_{\psi_{\text{star}}}$ and $|\bar{\psi}_{\text{star}} - \bar{\psi}_{\text{submm}}|$ are presented in Table 2.

4.1.2. Starlight polarized fraction p_{star} within the *Planck* beam

We computed the polarization fraction of the mean starlight polarization signal

$$\bar{p}_{\text{star}} = \left(\bar{q}_{\text{star}}^2 + \bar{u}_{\text{star}}^2 \right)^{1/2}, \quad (7)$$

and the dispersion

$$\mathcal{S}_{p_{\text{star}}} = \left(\frac{1}{N-1} \sum_{i=1}^N \left[\left(\bar{q}_{\text{star}} - q_{\text{star}}^{(i)} \right)^2 + \left(\bar{u}_{\text{star}} - u_{\text{star}}^{(i)} \right)^2 \right] \right)^{1/2}, \quad (8)$$

where N is the number of stars in that vicinity. As in the case of $\mathcal{S}_{\psi_{\text{star}}}$ we used the notation $\mathcal{S}_{p_{\text{star}}}$ to avoid confusion with $\sigma_{p_{\text{star}}}$, which is the uncertainty on the polarization fraction p_{star} . We compared the estimated values of the $|\bar{\psi}_{\text{star}} - \bar{\psi}_{\text{submm}}|$ with the p_{star} fluctuations characterized by $\mathcal{S}_{p_{\text{star}}}/\bar{p}_{\text{star}}$ in Fig. 4.

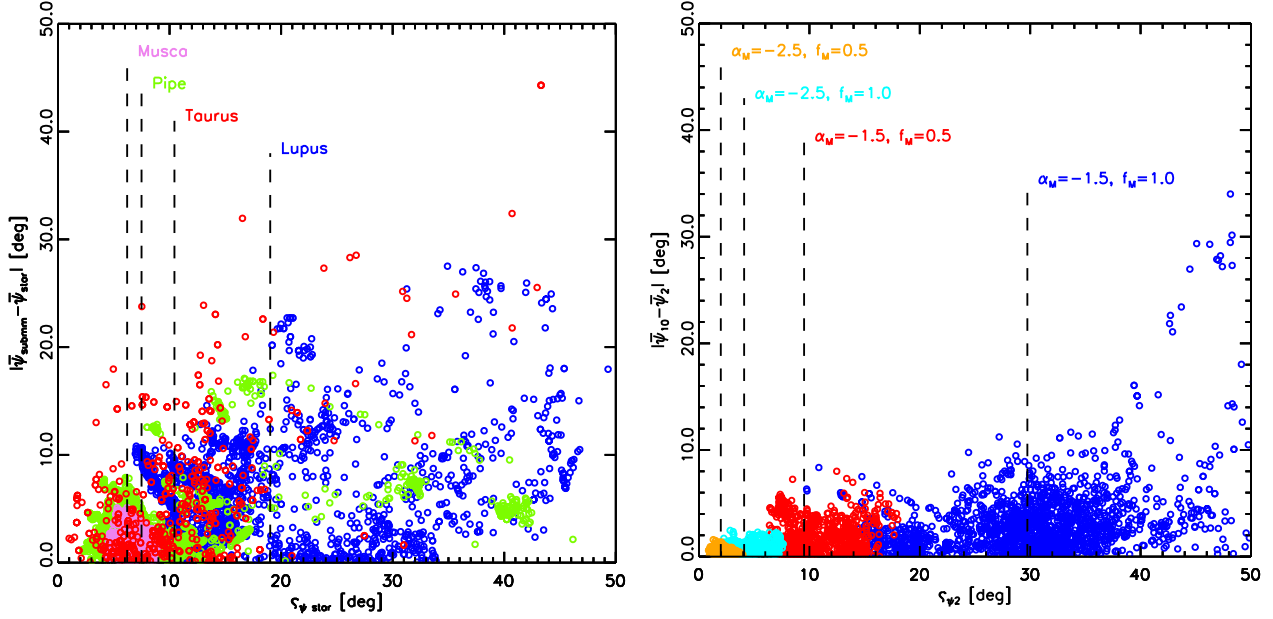


Fig. 3. Scatter plot of the differences between the mean field orientations inferred from starlight and submillimetre polarization, $|\bar{\psi}_{\text{submm}} - \bar{\psi}_{\text{star}}|$, against the dispersion of orientation angles, $\varsigma_{\psi_{\text{star}}}$, in all the $10'$ vicinities with more than three stars towards each observed region (*left*) and towards the Gaussian polarization models introduced in Sect. 3 (*right*). The dashed vertical lines indicate the mean values of $\varsigma_{\psi_{\text{star}}}$.

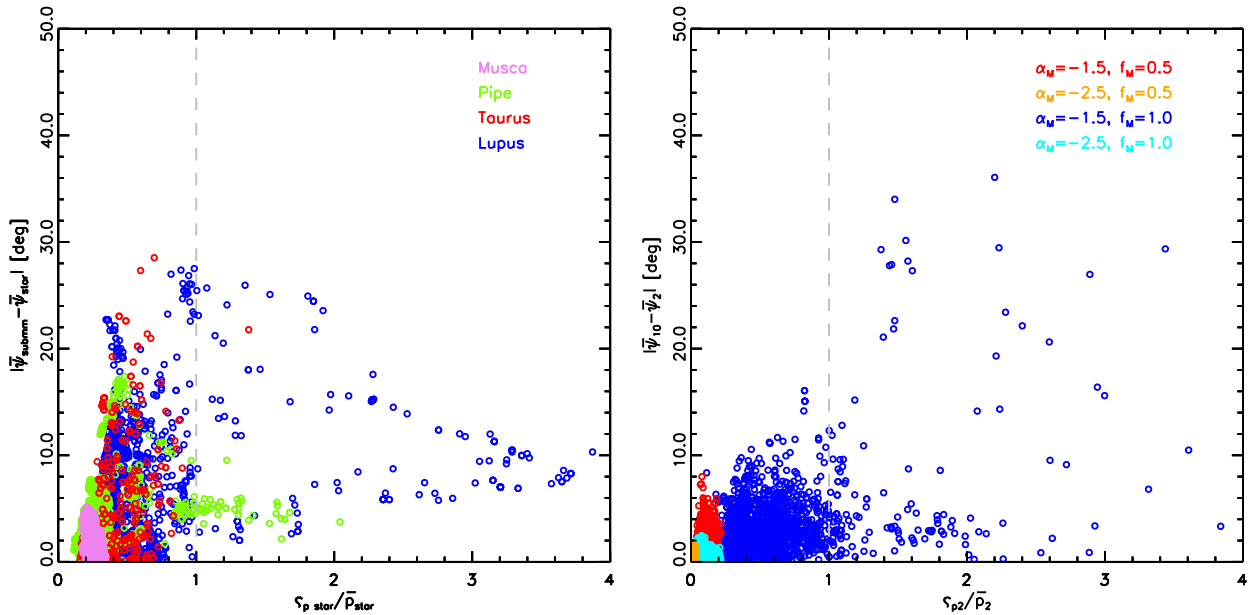


Fig. 4. Scatter plot of the differences between the mean field orientations inferred from starlight and submillimetre polarization, $|\bar{\psi}_{\text{submm}} - \bar{\psi}_{\text{star}}|$, against the fluctuations in polarized fraction, $\varsigma_{p_{\text{star}}}/\bar{p}_{\text{star}}$, in all the $10'$ vicinities with more than three stars towards each observed region (*left*) and towards the Gaussian polarization models introduced in Sect. 3 (*right*). The dashed grey line indicates $\varsigma_{p_{\text{star}}}/\bar{p}_{\text{star}} = 1$.

4.2. Angular structure function

In order to further characterize the values of ψ_{star} and ψ_{submm} without averaging over a particular vicinity size, we evaluated their second-order structure function, $S_2(\ell)$. In this technique, the $\langle \hat{\mathbf{B}}_{\perp} \rangle$ orientation dispersion is quantified by considering the difference in angle, $\Delta\psi(\ell) = \psi(\mathbf{x}) - \psi(\mathbf{x} + \ell)$, between pairs of $\langle \hat{\mathbf{B}}_{\perp} \rangle$ pseudo-vectors separated by displacements ℓ in the plane of the sky. Assuming that the angle differences are statistically isotropic, that is, they depend only on $\ell = |\ell|$ and not on the orientation of ℓ , they can be binned by distance, ℓ . Considering a central position \mathbf{x} , there are $N(\ell)$ pixels, identified by an index i , such that the distance from \mathbf{x} to \mathbf{x}_i lies within the corresponding

ℓ -bin. The square of the second-order structure function is then,

$$S_2^2(\ell) = \left\langle \frac{1}{N(\ell)} \sum_{i=1}^{N(\ell)} (\Delta\psi_{x,i})^2 \right\rangle_x, \quad (9)$$

where $\Delta\psi_{x,i} = \psi(\mathbf{x}) - \psi(\mathbf{x}_i)$ and $\langle \dots \rangle_x$ denotes an average over all the selected observations. In terms of the Stokes parameters, this difference can be written

$$\Delta\psi_{x,i} = \frac{1}{2} \arctan(Q_i U_x - Q_x U_i, Q_i Q_x + U_i U_x), \quad (10)$$

with $Q_i = Q(\mathbf{x}_i)$, $U_i = U(\mathbf{x}_i)$, $Q_x = Q(\mathbf{x})$, and $U_x = U(\mathbf{x})$.

We calculated $S_2(\ell)$ for both starlight and submillimetre polarization observations using the lines of sight where starlight observations are available and calculating the corresponding ψ_{submm} at the exact position of the stars by linear interpolation of the *Planck* 353 GHz Stokes Q and U maps. For the sake of comparison, we also computed $S_2(\ell)$ for 10 000 LOSs randomly distributed over zones with N_H values in the same range as the starlight polarization observations in each region.

To construct $S_2(\ell)$ we first computed the angle difference, $\Delta\psi_{x,i}$, for every pair of points in each region. Next, we binned the data into 40 bins of equal length between 0 and $120'$. The values of the lag, ℓ , correspond to the geometrical average of the distances used to define each bin. The variance of $S_2(\ell)$ was calculated by random sampling (bootstrapping). The calculated values of the angular structure function for the starlight and the submillimetre polarization observations, $S_2^{\text{star}}(\ell)$ and $S_2^{\text{submm}}(\ell)$, respectively, are presented in Fig. 6.

4.3. Differences between $S_2^{\text{star}}(\ell)$ and $S_2^{\text{submm}}(\ell)$

We quantified the differences between $S_2^{\text{star}}(\ell)$ and $S_2^{\text{submm}}(\ell)$ using two methods. First,

$$\delta S_2(\ell) \equiv S_2^{\text{star}}(\ell) - S_2^{\text{submm}}(\ell), \quad (11)$$

which corresponds to what can be inferred from the visual inspection of the values illustrated in the upper plot of each panel in Fig. 6. Second,

$$\Delta S_2(\ell) \equiv \sqrt{[S_2^{\text{star}}(\ell)]^2 - C_{\text{star}}^2} - ([S_2^{\text{submm}}(\ell)]^2 - C_{\text{submm}}^2), \quad (12)$$

which corresponds to the quadratic differences between both functions and accounts for the effects of the bias corrections, $C^2(\ell)$.

Although we selected polarization observations with high S/N, we nevertheless evaluated the effect of the polarization bias on the angular structure function, as follows. Each orientation angle ψ is given by

$$\psi(\mathbf{x}) = \psi_0(\mathbf{x}) + \delta_\psi(\mathbf{x}), \quad (13)$$

where $\psi_0(\mathbf{x})$ is the true value of the angle and $\delta_\psi(\mathbf{x})$ a random (zero-mean) error, then the expectation value of the square of

$$\begin{aligned} \Delta\psi(\ell) &= \psi(\mathbf{x}) - \psi(\mathbf{x} + \ell) \\ &= [\psi_0(\mathbf{x}) + \delta_\psi(\mathbf{x})] - [\psi_0(\mathbf{x} + \ell) + \delta_\psi(\mathbf{x} + \ell)] \\ &= \Delta\psi_0(\ell) + [\delta_\psi(\mathbf{x}) - \delta_\psi(\mathbf{x} + \ell)] \end{aligned} \quad (14)$$

is given by

$$\begin{aligned} \langle [\Delta\psi(\ell)]^2 \rangle &= \langle [\Delta\psi_0(\ell)]^2 \rangle + \langle [\delta_\psi(\mathbf{x})]^2 \rangle \\ &\quad + \langle [\delta_\psi(\mathbf{x} + \ell)]^2 \rangle - 2\langle \delta_\psi(\mathbf{x})\delta_\psi(\mathbf{x} + \ell) \rangle. \end{aligned} \quad (15)$$

For the starlight polarization observations $\langle \delta_\psi(\mathbf{x})\delta_\psi(\mathbf{x} + \ell) \rangle = 0$, because they correspond to a pencil-like beam and the measurements are uncorrelated, and by definition the mean of the square of the measurement uncertainties, $\sigma_\psi^2(\mathbf{x}) \equiv \langle [\delta_\psi(\mathbf{x})]^2 \rangle$ and $\sigma_\psi^2(\mathbf{x} + \ell) \equiv \langle [\delta_\psi(\mathbf{x} + \ell)]^2 \rangle$, thus leading to

$$\langle [\Delta\psi(\ell)]^2 \rangle = \langle [\Delta\psi_0(\ell)]^2 \rangle + \sigma_\psi^2(\mathbf{x}) + \sigma_\psi^2(\mathbf{x} + \ell). \quad (16)$$

It follows that in order to recover the true value

$$\langle [\Delta\psi_0(\ell)]^2 \rangle = \langle [\Delta\psi(\ell)]^2 \rangle - C_{\text{star}}^2, \quad (17)$$

we must subtract the de-biasing correction given by

$$C_{\text{star}}^2 = \sigma_\psi^2(\mathbf{x}) + \sigma_\psi^2(\mathbf{x} + \ell), \quad (18)$$

from the $\langle [\Delta\psi(\ell)]^2 \rangle$ values estimated for the observations.

For the submillimetre observations, the de-biasing correction is given by Eq. (B.4) from Houde et al. (2009), which corresponds to

$$C_{\text{submm}}^2 = \sigma_\psi^2(\mathbf{x}) + \sigma_\psi^2(\mathbf{x} + \ell) - 2\sigma_\psi(\mathbf{x})\sigma_\psi(\mathbf{x} + \ell)e^{-\ell^2/4W^2}, \quad (19)$$

where $W = 0.425$ FWHM is the beam radius.

5. Discussion

We used two methods to compare the $\langle \hat{\mathbf{B}}_\perp \rangle$ structure as sampled by starlight and submillimetre, whose main difference is the range of scales over which the comparison is made.

In the vicinity method, we quantified the dispersion of $\langle \hat{\mathbf{B}}_\perp \rangle$ orientation within the *Planck* beam, which is accessible through the high angular resolution of the starlight polarization observations. The difference between $\langle \hat{\mathbf{B}}_\perp^{\text{submm}} \rangle$ and $\langle \hat{\mathbf{B}}_\perp^{\text{star}} \rangle$ averaged over the area of the *Planck* beam amounts to a comparison at the $10'$ scale. To relate this difference to the structure of the field at smaller scales, we compared it with $\zeta_{\psi_{\text{star}}}$ and $\zeta_{p_{\text{star}}}/\bar{p}_{\text{star}}$.

In the $S_2(\ell)$ method, we considered the dispersion of the $\langle \hat{\mathbf{B}}_\perp^{\text{submm}} \rangle$ and $\langle \hat{\mathbf{B}}_\perp^{\text{star}} \rangle$ orientation angles across multiple scales. At scales below the size of the *Planck* beam, $\ell < 10'$, we evaluated how much structure is smoothed by the angular resolution of the *Planck* 353 GHz observation. At scales above the size of the *Planck* beam, $\ell > 10'$, we evaluated if the structure of the field traced by starlight polarization is comparable to that inferred from the *Planck* 353 GHz observations.

5.1. The $\langle \hat{\mathbf{B}}_\perp \rangle$ structure within the *Planck* beam

The average values of the difference between $\langle \hat{\mathbf{B}}_\perp^{\text{star}} \rangle$ and $\langle \hat{\mathbf{B}}_\perp^{\text{submm}} \rangle$ within the $10'$ -diameter vicinities, presented in Table 2 and illustrated in Fig. 2, show that the $\langle \hat{\mathbf{B}}_\perp \rangle$ orientations inferred from optical/NIR polarization angle follow those inferred from submillimetre observations within approximately 5° , thus confirming the visual impression from Fig. 1 and suggesting excellent agreement between the $\langle \hat{\mathbf{B}}_\perp \rangle$ orientations estimated with both techniques when evaluated at the $10'$ scale.

The values in Table 2 reveal that the 85th and 95th percentiles of $|\bar{\psi}_{\text{star}} - \bar{\psi}_{\text{submm}}|$ in the vicinities are less than 12° and $16^\circ.6$, respectively. The left panel of Fig. 3 shows that the distribution of the values $|\bar{\psi}_{\text{star}} - \bar{\psi}_{\text{submm}}|$ and $\zeta_{\psi_{\text{star}}}$ is different in each region. Also, there seems to be a trend in $|\bar{\psi}_{\text{star}} - \bar{\psi}_{\text{submm}}|$ and $\zeta_{\psi_{\text{star}}}$ as the largest differences between the orientation angles correspond the vicinities with the largest dispersions of orientation angles. Towards the Musca region, all the vicinities are grouped around $|\bar{\psi}_{\text{star}} - \bar{\psi}_{\text{submm}}| \lesssim 5^\circ$ and $\zeta_{\psi_{\text{star}}} \lesssim 9^\circ$. Towards the Pipe nebula, we found that the majority of the vicinities have $|\bar{\psi}_{\text{star}} - \bar{\psi}_{\text{submm}}| \lesssim 15^\circ$, but there are many vicinities with $\zeta_{\psi_{\text{star}}} \gtrsim 30^\circ$. Towards the Lupus I region, where the mean values of $|\bar{\psi}_{\text{star}} - \bar{\psi}_{\text{submm}}|$ and $\zeta_{\psi_{\text{star}}}$ are the largest, there are many vicinities with $\zeta_{\psi_{\text{star}}} \gtrsim 40^\circ$.

To estimate the amount of dispersion that would be expected just from the differences in angular resolution between the two observations, we applied the same analysis to the Gaussian polarization models introduced in Sect. 3. The behavior of $|\bar{\psi}_2 - \bar{\psi}_{10}|$ with respect to ζ_{ψ_2} is only related to the difference in the angular

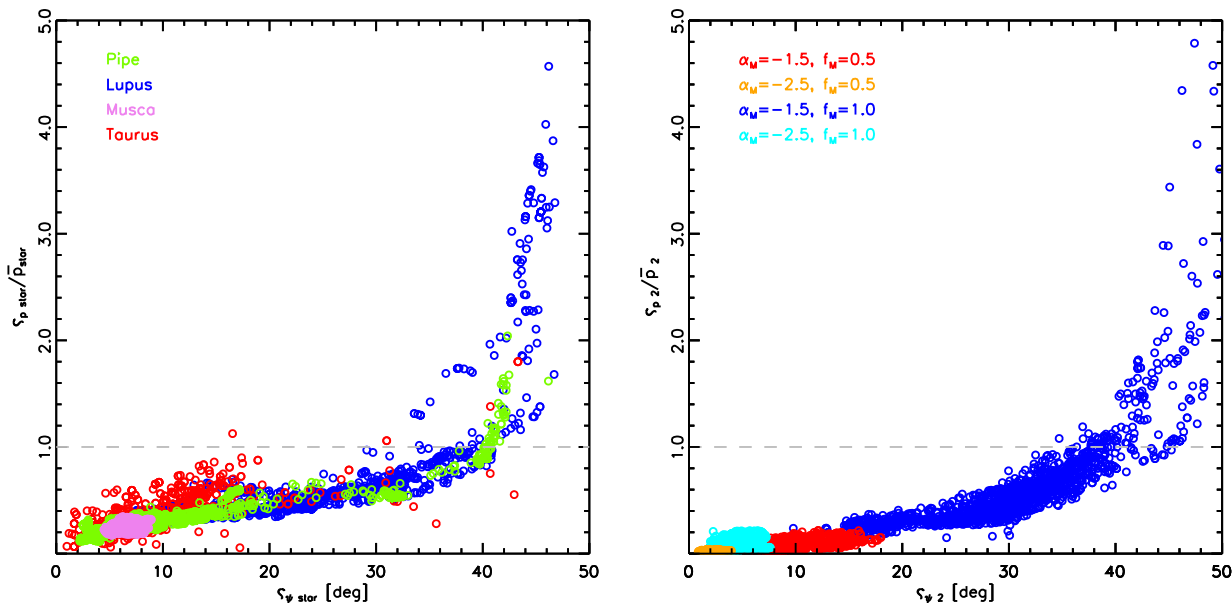


Fig. 5. Scatter plot of the fluctuations in polarized fraction, $\zeta_{p_{\text{star}}}/\bar{p}_{\text{star}}$ against the dispersion of orientation angles, $\zeta_{\psi_{\text{star}}}$ in all the 10' vicinities with more than three stars towards each observed region (*left*) and towards the Gaussian polarization models introduced in Sect. 3 (*right*). The dashed gray line indicates $\zeta_{p_{\text{star}}}/\bar{p}_{\text{star}} = 1$.

resolutions since, by construction, $\bar{\psi}_{10}$ and $\bar{\psi}_2$ correspond to the same field.

The right panel of Fig. 3 shows that these simple models qualitatively reproduce some of the trends seen towards the considered MCs. In this example, the models with $f_M = 0.5$ reproduce the low mean and dispersion of $|\bar{\psi}_{\text{star}} - \bar{\psi}_{\text{submm}}|$ and $\zeta_{\psi_{\text{star}}}$ values seen towards the Musca regions. The models with larger dispersion around the mean field, $f_M = 1.0$, show similar trends to the Lupus I and the Pipe nebula, where the values of $\zeta_{\psi_{\text{star}}}$ are larger than in Musca. However, one should refrain from drawing conclusions on the values of α_M and f_M towards these regions just from this comparison as these parameters are degenerate and the inclination of the mean field orientation with respect to the plane of the sky is unknown. What can be learned from the comparison with these simple polarization models is that the observed values of $|\bar{\psi}_{\text{star}} - \bar{\psi}_{\text{submm}}|$ and $\zeta_{\psi_{\text{star}}}$ do not indicate that stars and the submillimetre observations are sampling significantly different \mathbf{B} structures.

To further investigate the relation between $|\bar{\psi}_{\text{star}} - \bar{\psi}_{\text{submm}}|$ and the structure within the *Planck* beam, we compared this quantity with the fluctuations in the starlight polarization fraction characterized by $\zeta_{p_{\text{star}}}/\bar{p}_{\text{star}}$. In principle, each \bar{p}_{star} observation carries information about the dispersion of the field along the LOS that might be lost if we only considered the orientation angle.

The left panel of Fig. 4 shows that for most of the vicinities the fluctuations of p_{star} are relatively low, $\zeta_{p_{\text{star}}}/\bar{p}_{\text{star}} < 1$. The largest values of $\zeta_{p_{\text{star}}}/\bar{p}_{\text{star}}$, present mainly towards Lupus I and the Pipe nebula, are not particularly associated with the largest values of $|\bar{\psi}_{\text{star}} - \bar{\psi}_{\text{submm}}|$. It is tempting to interpret large fluctuations of p_{star} within a vicinity as indicating that each star is sampling considerably different media along the LOS. However, the results of the analysis of the Gaussian models, presented in the right panel of Fig. 4, indicate that these fluctuations can be produced by the dispersions in the 3-dimensional orientation of \mathbf{B} , which are larger for larger values of f_M or values of α_M closer to zero. The similarities in the behavior of $|\bar{\psi}_2 - \bar{\psi}_{10}|$ with respect to ζ_2/\bar{p}_2 and $|\bar{\psi}_{\text{star}} - \bar{\psi}_{\text{submm}}|$ with respect to $\zeta_{p_{\text{star}}}/\bar{p}_{\text{star}}$ do not indicate that starlight and submillimetre observations are sampling

significantly different \mathbf{B} structures. But they indicate considerable differences in the dispersion of \mathbf{B} in the different regions.

In principle, the value of the dispersions $\zeta_{p_{\text{star}}}/\bar{p}_{\text{star}}$ and $\zeta_{\psi_{\text{star}}}$ could be associated with the amount of turbulence in each region. However, the velocity dispersions in each region observed at angular resolutions close to 10' are not significantly different, with $\sigma_v = 1.2 \pm 0.5$, 1.5 ± 0.6 , and $1.0 \pm 0.4 \text{ km s}^{-1}$ towards Taurus, Lupus, and the Chamaeleon-Musca regions, respectively. These values are estimated from CO emission-line observations (Dame et al. 2001) and presented in Table D.1. of Planck Collaboration Int. XXXV (2016). But these MCs are located in particularly different environments. Recent studies indicate that Lupus I, the region where we saw the largest values of $\zeta_{p_{\text{star}}}/\bar{p}_{\text{star}}$ and $\zeta_{\psi_{\text{star}}}$, has a larger star formation rate and its formation is associated with large feedback events (Rygl et al. 2013; Gaczkowski et al. 2015). In contrast, Musca and Taurus, where the values of $\zeta_{p_{\text{star}}}/\bar{p}_{\text{star}}$ and $\zeta_{\psi_{\text{star}}}$ are low, are apparently more quiescent (Kenyon et al. 2008; Luhman 2008). Nevertheless, establishing a detailed relation between the gas kinematics in each of these clouds and the structure of $\langle \hat{\mathbf{B}}_{\perp} \rangle$ is not straightforward and it is beyond the goal of this work.

For the sake of completeness, we evaluated the relation between $\zeta_{p_{\text{star}}}/\bar{p}_{\text{star}}$ and $\zeta_{\psi_{\text{star}}}$. Figure 5 shows how the values of $\zeta_{\psi_{\text{star}}}$ are well correlated with $\zeta_{p_{\text{star}}}/\bar{p}_{\text{star}}$. However, the values of $\zeta_{p_{\text{star}}}/\bar{p}_{\text{star}}$ show a larger dynamic range since the angle dispersion saturates at $\zeta_{\psi_{\text{star}}} \approx 52^\circ$, while $\zeta_{p_{\text{star}}}$

The trend in the observed values of $\zeta_{p_{\text{star}}}/\bar{p}_{\text{star}}$ and $\zeta_{\psi_{\text{star}}}$ in the vicinities is consistent with the results found in the Gaussian models. This is important because such a trend is not possible to reproduce in terms of the dust grain alignment efficiency alone. In the observations, we found that the largest values of $\zeta_{p_{\text{star}}}/\bar{p}_{\text{star}}$ are consistently associated with the largest $\zeta_{\psi_{\text{star}}}$. If the dust grain alignment was the only process responsible for the observed $\langle \hat{\mathbf{B}}_{\perp}^{\text{star}} \rangle$, the decrease in the values of p_{star} would be independent of the values of $\zeta_{\psi_{\text{star}}}$ since the lowest values of p_{star} would correspond to vicinities where the dust polarization does not sample the \mathbf{B} morphology making the observed $\langle \hat{\mathbf{B}}_{\perp}^{\text{star}} \rangle$ orientations random. This accounts for the saturation of $\zeta_{\psi_{\text{star}}} \approx 52^\circ$,

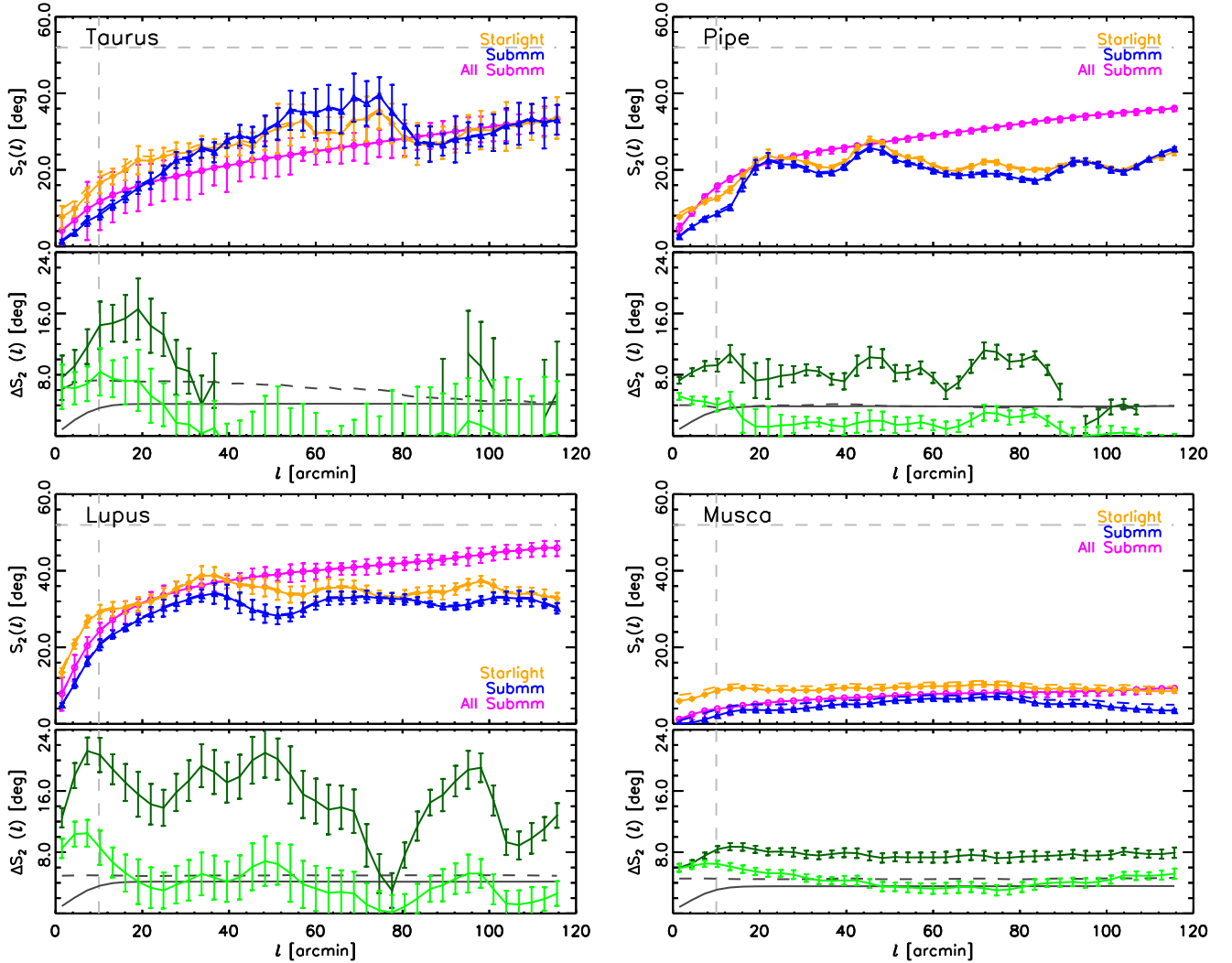


Fig. 6. Structure functions of the starlight polarization $S_2^{\text{star}}(\ell)$ (orange), submillimetre polarization along the lines of sight to stars, $S_2^{\text{submm}}(\ell)$ (blue), and submillimetre polarization over the whole map, $S_2^{\text{all submm}}(\ell)$ (magenta). In the lower plot of each panel we present the differences $\Delta S_2(\ell) \equiv \left[\left([S_2^{\text{star}}(\ell)]^2 - C_{\text{star}}^2 \right) - \left([S_2^{\text{submm}}(\ell)]^2 - C_{\text{submm}}^2 \right) \right]^{1/2}$ (dark green), $\delta S_2(\ell) \equiv S_2^{\text{star}}(\ell) - S_2^{\text{submm}}(\ell)$ (light green), and the corresponding bias corrections, C_{star}^2 (dashed gray) and C_{submm}^2 (solid gray). The vertical dashed line indicates the effective size of the *Planck* beam. The horizontal dashed line in the upper plot of each panel indicates $S_2(\ell) = \pi / \sqrt{12} \text{ rad} \approx 52^\circ$, which corresponds to a random distribution of orientations.

but it does not account for the correlation between $\varsigma_{p_{\text{star}}}/\bar{p}_{\text{star}}$ and $\varsigma_{\psi_{\text{star}}}$ at smaller $\varsigma_{\psi_{\text{star}}}$ values. This does not exclude the effect of the dust grain alignment efficiency, which we assumed to be perfect, but indicates that the magnetic field morphology and the spatial correlations in the polarization observations are a key ingredient for the interpretation of the distributions of p and ψ .

5.2. Background and line of sight depth

So far we have interpreted the values of $|\bar{\psi}_{\text{star}} - \bar{\psi}_{\text{submm}}|$, $\varsigma_{\psi_{\text{star}}}$ and $\varsigma_{p_{\text{star}}}/\bar{p}_{\text{star}}$ in terms of Gaussian models of polarization, which are 3-dimensional in their treatment of \mathbf{B} , but do not include the depth of the LOS, which is different for the starlight and submillimetre observations.

The magnetic field responsible for the starlight polarization angle observed towards a particular direction is the average of various components encountered by the beam of starlight as it traverses the ISM, weighted by the specific extinction in each segment of path. In contrast, the *Planck* observations include the contributions of the dust thermal polarized emission along all the LOS. If we assume that the dust scale height is 50 pc

and the mean density is $n_0 \approx 1 \text{ cm}^{-3}$, the total gas column density contributed by the dust in the Galactic disk corresponds to about 40% of the mean N_{H} towards the vicinities in the considered regions. Given that the stars within the same *Planck*-beam-sized vicinity can be distributed at multiple distances, thus sampling different segments in the ISM, we can potentially use the starlight polarization observations to characterize $\langle \hat{\mathbf{B}}_{\perp} \rangle$ in different portions of the LOS and describe its structure using the observed values of $\varsigma_{p_{\text{star}}}/\bar{p}_{\text{star}}$ and $\varsigma_{\psi_{\text{star}}}$.

Unfortunately, the distance to the majority of the stars included in this study is currently unknown, making it difficult to assess the contribution of each section of the LOS to the total polarized signal. For the moment, we can compare the behavior of $\varsigma_{\psi_{\text{star}}}$ and $\varsigma_{p_{\text{star}}}/\bar{p}_{\text{star}}$ as a function of the total polarized flux in the *Planck* 353 GHz observations and characterize any correlations that indicate the differences in the LOS depth and the potential effect of an homogeneous polarization background behind the stars.

Figure 7 presents a comparison between the $\varsigma_{p_{\text{star}}}/\bar{p}_{\text{star}}$ and $\varsigma_{\psi_{\text{star}}}$ with the mean values of the total polarized flux from the *Planck* 353 GHz observations, \bar{P}_{submm} , within the 10' vicinities.

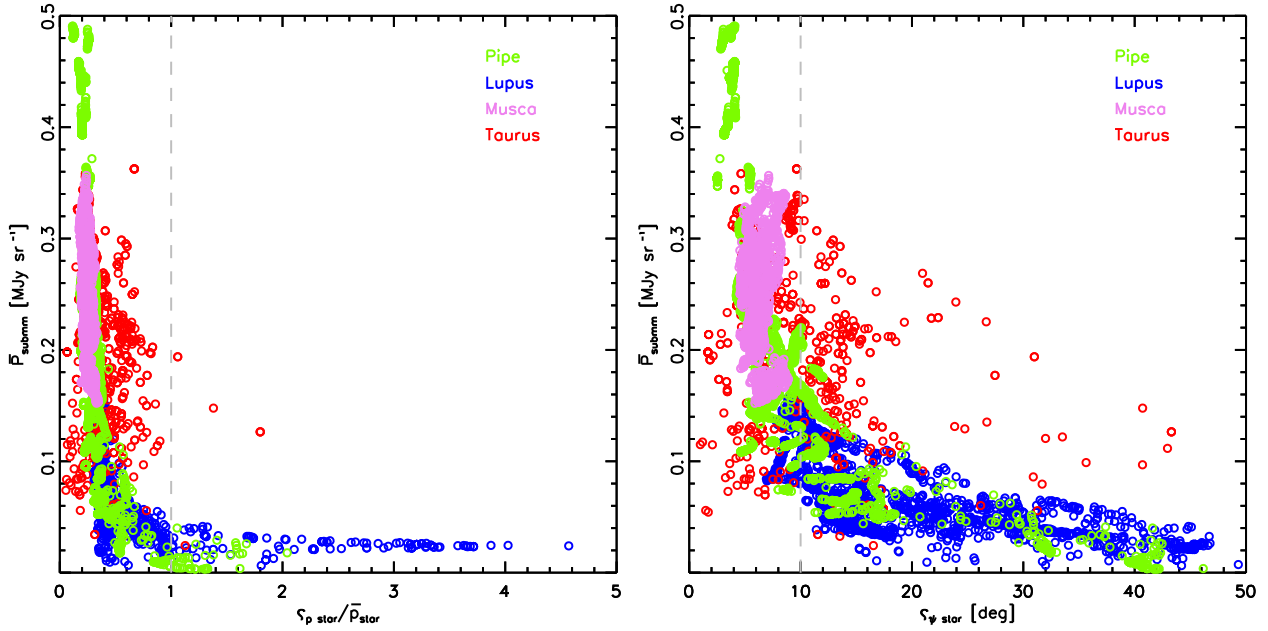


Fig. 7. Scatter plot of the fluctuations in polarized fraction, $\varsigma_{p_{\text{star}}}/\bar{p}_{\text{star}}$ (left), and the dispersion of orientation angles, $\varsigma_{\psi_{\text{star}}}$ (right), against the mean values of the total polarized flux from the *Planck* 353 GHz observations in all the $10'$ vicinities with more than three stars towards each observed region. The dashed gray lines, included just for reference, correspond to $\varsigma_{p_{\text{star}}}/\bar{p}_{\text{star}} = 1$ (left) and $\varsigma_{\psi_{\text{star}}} = 10^\circ$ (right).

We observed that the largest values of $\varsigma_{p_{\text{star}}}/\bar{p}_{\text{star}}$ and $\varsigma_{\psi_{\text{star}}}$ are in general associated with the lowest values of \bar{P}_{submm} . We did not find vicinities where \bar{P}_{submm} is large and where, simultaneously, the values of $\varsigma_{p_{\text{star}}}/\bar{p}_{\text{star}}$ and $\varsigma_{\psi_{\text{star}}}$ are also large corresponding to a large dispersion of $\langle \hat{\mathbf{B}}_{\perp} \rangle$ or large differences in the LOS sampled by different stars within the same vicinity. We interpret this as an indication that there is no contribution of an homogeneous polarized background behind the stars.

To better describe this interpretation, we illustrated our argument with four toy models of the possible $\langle \hat{\mathbf{B}}_{\perp} \rangle$ structure sampled by the *Planck* beam along the LOS, shown in Fig. 8. We considered that:

- the stars are located in a portion of the ISM where \mathbf{B} is uniform and beyond the last star \mathbf{B} is not uniform;
- the stars are located in a portion of the ISM where \mathbf{B} is uniform and beyond the last star \mathbf{B} is uniform with a possibly different mean direction;
- the stars are located in a portion of the ISM where \mathbf{B} is not uniform and beyond the last star \mathbf{B} is not uniform;
- the stars are located in a portion of the ISM where \mathbf{B} is not uniform and beyond the last star \mathbf{B} is uniform.

For model (a), we expected relatively low values of $\varsigma_{p_{\text{star}}}/\bar{p}_{\text{star}}$ and $\varsigma_{\psi_{\text{star}}}$, since the uniform structure of the field introduces correlations between the polarization of stars at the different distances; relatively low values of $|\bar{\psi}_{\text{star}} - \bar{\psi}_{\text{submm}}|$, since the projected field orientation is dominated by the portion of the ISM where $\langle \hat{\mathbf{B}}_{\perp} \rangle$ is homogeneous; and not particularly low values of \bar{P}_{submm} .

For model (b), we expected relatively low values of $\varsigma_{p_{\text{star}}}/\bar{p}_{\text{star}}$ and $\varsigma_{\psi_{\text{star}}}$ for the same reason mentioned in the previous case; homogeneous values of $|\bar{\psi}_{\text{star}} - \bar{\psi}_{\text{submm}}|$ that correspond to the difference between the mean $\langle \hat{\mathbf{B}}_{\perp} \rangle$ in the first portion and the average $\langle \hat{\mathbf{B}}_{\perp} \rangle$ from both portions of the LOS; and not particularly low values of \bar{P}_{submm} , unless the two regions happen to have fields at 90° to each other.

For model (c), we expected relatively large values of $\varsigma_{p_{\text{star}}}/\bar{p}_{\text{star}}$ and $\varsigma_{\psi_{\text{star}}}$ given that the correlation length of $\langle \hat{\mathbf{B}}_{\perp} \rangle$ is

small; values of $|\bar{\psi}_{\text{star}} - \bar{\psi}_{\text{submm}}|$ that depend on the length of each portion of the LOS; and low values of \bar{P}_{submm} .

For model (d), we expected relatively large values of $\varsigma_{p_{\text{star}}}/\bar{p}_{\text{star}}$ and $\varsigma_{\psi_{\text{star}}}$ for the same reason mentioned in the previous case; values of $|\bar{\psi}_{\text{star}} - \bar{\psi}_{\text{submm}}|$ that depend on the structure of the portion of the LOS sampled by the stars; and not particularly low values of \bar{P}_{submm} , which are dominated by the \mathbf{B} correlation in the medium behind the stars.

The behavior of the Lupus I and portions of the Pipe nebula seems to be related to model (c). In contrast, the behavior of Musca is more similar to model (b), as previously identified in [Planck Collaboration Int. XXXIII \(2016\)](#), where the contribution of the background was inferred using the polarization orientation at different N_{H} . Model (a) is harder to evaluate, given that we did not have a clear estimate of how much of \bar{P}_{submm} is due to the portion of the LOS also sampled by the stars, but the results of the analysis do not discard it. What is clear from this test is that there is no evidence of model (d). The stars considered in this study can be located as far as 1 or 2 kpc from the Sun, thus it is not possible to unambiguously define what is the contribution of the ISM behind the cloud to the observed $\langle \hat{\mathbf{B}}_{\perp}^{\text{submm}} \rangle$.

To further advance in the investigation of the polarized background, one could compare the values of P_{submm} and p_{star} towards high Galactic latitudes, where the depth of the LOS is limited and the contribution of the background is negligible. However, there is evidence that the dust towards the aforementioned regions has different properties than the dust in the MCs ([Planck Collaboration Int. XXIX 2016](#)) and this involves a detailed study of the dust emission and extinction properties, which is beyond the scope of this work.

5.3. The angular structure function $S_2(\ell)$

Our objective in computing $S_2^{\text{star}}(\ell)$ and $S_2^{\text{submm}}(\ell)$ along the same LOSs, shown in Fig. 6, is evaluating the differences between the $\langle \hat{\mathbf{B}}_{\perp}^{\text{star}} \rangle$ and $\langle \hat{\mathbf{B}}_{\perp}^{\text{submm}} \rangle$ structure across multiple scales. The differences $\delta S_2(\ell)$ and $\Delta S_2(\ell)$, defined in Eqs. (11) and (12)

Table 3. Quantities derived from the angular structure function $S_2(\ell)$.

Region	$\Delta S_2(1.5')^{a,b}$ [deg]	$\Delta S_2(10.2')^{a,c}$ [deg]	$\langle \Delta S_2(\ell) \rangle_{\ell > 10'}$ [deg]
Taurus	7.6	14.5	– ^d
Pipe	7.3	9.3	7.8 ± 2.5
Lupus I	12.5	20.7	14.7 ± 4.4
Musca	6.0	8.4	7.7 ± 0.4

Notes. ^(a) $\Delta S_2(\ell)$ as defined in Eq. (12). ^(b) $1.5'$ corresponds to the center of the first ℓ -bin in the range $0' < \ell < 2.9'$. ^(c) $10.2'$ corresponds to the center of the ℓ -bin in the range $8.8' < \ell < 11.7'$. ^(d) Towards Taurus, we found $S_2^{\text{star}}(\ell) < S_2^{\text{submm}}(\ell)$ for a wide range of ℓ . This effect, produced by an insufficient amount of starlight polarization observations to cover those scales, makes the corresponding values of $\langle \Delta S_2(\ell) \rangle_{\ell > 10'}$ imaginary and not meaningful.

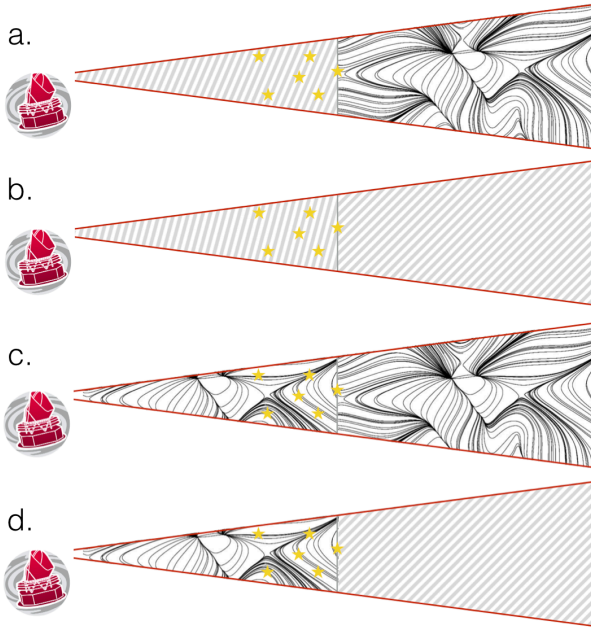


Fig. 8. Illustration of four simplified models of the LOS sampled by a *Planck* beam; **a)** stars located in a portion of the ISM where \mathbf{B} is uniform and beyond the last star \mathbf{B} is not uniform; **b)** stars located in a portion of the ISM where \mathbf{B} is uniform and beyond the last star \mathbf{B} is uniform with a possibly different mean direction; **c)** stars located in a portion of the ISM where \mathbf{B} is not uniform and beyond the last star \mathbf{B} is not uniform; and **d)** stars located in a portion of the ISM where \mathbf{B} is not uniform and beyond the last star \mathbf{B} is uniform.

respectively, are shown in the lower plots of each panel in Fig. 6 and summarized in Table 3. We also tested if the behavior of $S_2^{\text{star}}(\ell)$ and $S_2^{\text{submm}}(\ell)$ is representative of the $\langle \hat{\mathbf{B}}_{\perp} \rangle$ behavior over each region by comparing it with $S_2^{\text{all submm}}(\ell)$, which corresponds to 10 000 LOSs randomly distributed over. Given the scale set by the angular resolution of the *Planck* observations, we discuss separately the behavior of $S_2(\ell)$ at scales $\ell < 10'$ and $\ell > 10'$.

5.3.1. The structure function at $\ell < 10'$

At scales $\ell < 10'$, $S_2^{\text{submm}}(\ell)$ progressively tends to zero with decreasing ℓ as expected from the smoothing by the *Planck* beam. In the lowest ℓ -bin, which corresponds to the range $0' < \ell < 2.9'$, we found that the differences between $S_2^{\text{star}}(\ell)$ and $S_2^{\text{submm}}(\ell)$ lie between $6^{\circ}0$ and $12^{\circ}5$, as presented in Table 3. The values of the bias corrections, C_{star} and C_{submm} shown in the lower plot of each panel in Fig. 6, indicate that these differences are not due to

noise, but correspond to the structure of $\langle \hat{\mathbf{B}}_{\perp} \rangle$ at $\ell < 2.9'$, which has been characterized in previous studies (Franco et al. 2010; Chapman et al. 2011; Franco & Alves 2015).

In the ℓ -bin around $\ell = 10'$, which corresponds to the range $8.8' < \ell < 11.7'$, we found that the differences between $S_2^{\text{star}}(\ell)$ and $S_2^{\text{submm}}(\ell)$ lie between $8^{\circ}5$ and $20^{\circ}7$, as also presented in Table 3. These values are directly comparable to those presented in Table 2, but given that the quadratic averaging implied in the calculation of $S_2(\ell)$ enhances large dispersion values, it is expected that $\Delta S_2(\ell \approx 10') > \langle \varsigma_{\psi_{\text{star}}} \rangle$. The largest values of ΔS_2 at $\ell < 10'$ are found towards the Lupus I region, where the vicinity analysis also identifies the largest values of $\langle \varsigma_{\psi_{\text{star}}} \rangle$. Consistently, the Pipe nebula and the Musca regions have the lowest values of $\langle \varsigma_{\psi_{\text{star}}} \rangle$ and ΔS_2 at $\ell < 10'$.

5.3.2. The structure function at $\ell > 10'$

At scales $\ell > 10'$, the values of $S_2^{\text{star}}(\ell)$ and $S_2^{\text{submm}}(\ell)$ are roughly constant, but present wave-like features or “jitter”. The jitter is not present in $S_2^{\text{all submm}}(\ell)$, which is estimated using Q_{submm} and U_{submm} in 10 000 LOSs randomly distributed over each region and not just along the LOSs with observations of starlight polarization, thus suggesting that these features are related to the distribution of the observed stars in the plane of the sky and not to the structure of $\langle \hat{\mathbf{B}}_{\perp} \rangle$. To evaluate this LOS distribution effect, we computed $S_2(\ell)$ in the Gaussian polarizations models introduced in Sect. 3.

For illustration purposes, we presented in Fig. 9 the values of $S_2(\ell)$ computed with the Stokes parameters Q_M and U_M corresponding to the models with either $\alpha_M = -1.5$ and $\alpha_M = -2.5$, $f_M = 1.0$ and $\gamma = 20^{\circ}$. The results of this simple test reveal that the distribution of the stars introduces jitter features in $S_2(\ell)$ that depend on the parameters in the model, but that are largely attenuated when considering a large amount of LOSs uniformly distributed over each region.

The jitter is largest in the $S_2(\ell)$ values corresponding to the model with the least amount of spatial correlation, $\alpha_M = -1.5$. In the model with $\alpha_M = -2.5$, the effect of the sampling is less manifest, as larger regions of the polarization maps are correlated, but this effect is not the result of the spectral index of turbulence alone. Given that lower values of f_M values correspond to small dispersions around the mean field direction, they also correspond to larger spatial correlation than models with higher f_M . In the same manner, lower values of γ correspond to mean field orientations closer to the plane of the sky, thus producing larger amount of spatial correlation than models where the mean field orientation is closer to the line of sight.

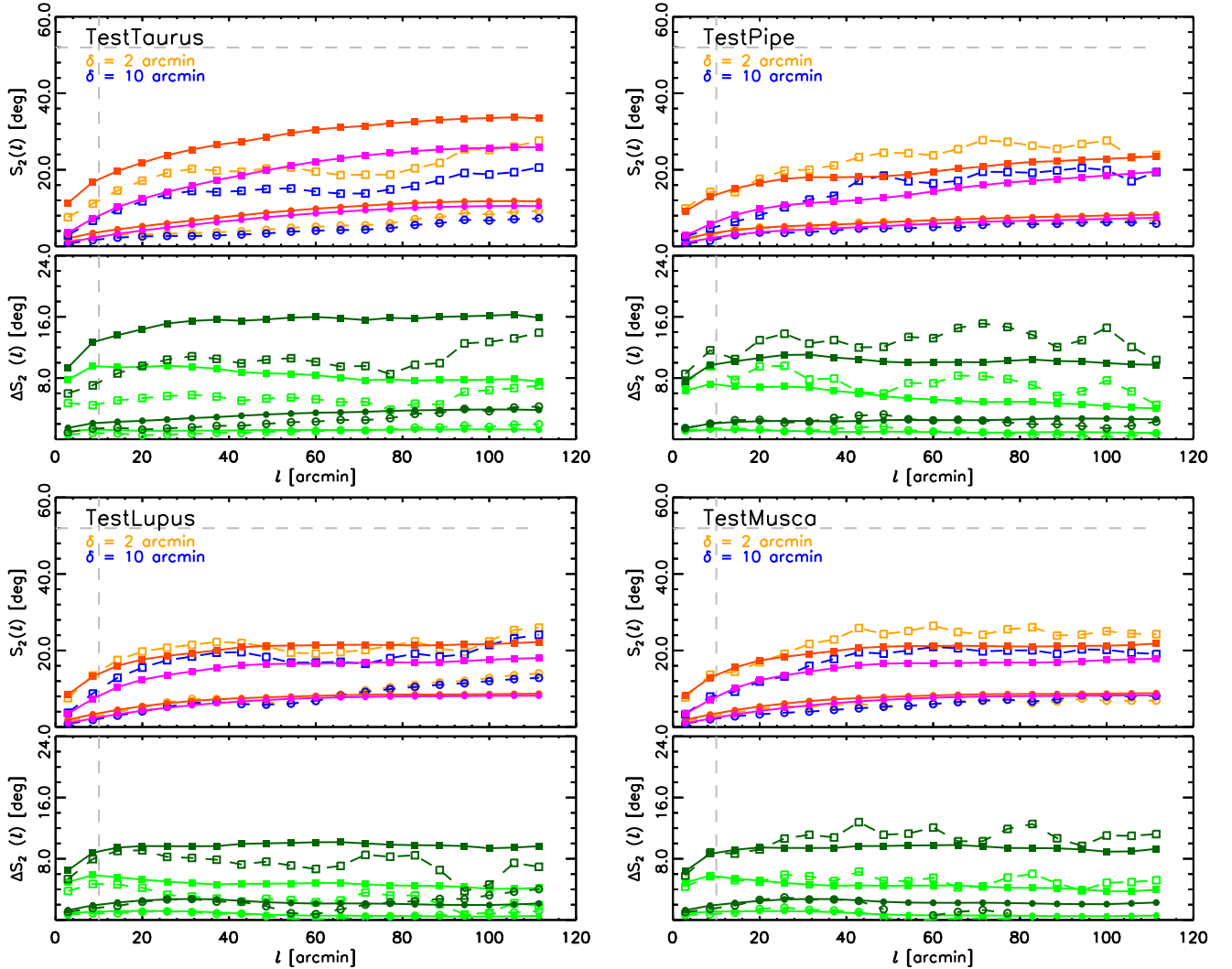


Fig. 9. Structure functions $S_2(\ell)$ calculated from the Gaussian polarization models corresponding to $f_M = 1.0$ and $\alpha_M = -2.5$ (circles) and $\alpha_M = -1.5$ (squares), with angular resolutions $\delta = 2'$ (orange and red), $10'$ (blue and magenta). The dashed lines with open symbols, shown in orange and blue, correspond to $S_2(\ell)$ calculated using only the values of Q_M and U_M towards lines of sight with starlight polarization observations towards each region. The solid lines with filled symbols, shown in red and magenta, correspond to $S_2(\ell)$ calculated using 10 000 LOSs randomly distributed over each region. In the lower plot of each panel, we present the differences, $\Delta S_2(\ell) \equiv \left([S_2^{\delta=2'}(\ell)]^2 - [S_2^{\delta=10'}(\ell)]^2 \right)^{1/2}$ (dark green), and $\delta S_2(\ell) \equiv S_2^{\delta=2'}(\ell) - S_2^{\delta=10'}(\ell)$ (light green). There is no noise included in the Gaussian models of polarization, so no bias correction is necessary.

The jitter can be associated to two aspects of the spatial distribution of the stars in the plane of the sky. On the one hand, starlight polarization observations are grouped in fields that correspond to the telescope field of view, thus imposing a particular sampling scale, that is, a set of distances that are much better sampled than others. This effect, which is less noticeable in the S_2 studies at scales below the size of the field of view (Franco et al. 2010; Franco & Alves 2015), is difficult to identify as it would involve sparsely sampling the data, requiring a large amount of observations at multiple separations to populate the ℓ -bins with enough statistical significance. On the other hand, S_2 involves averaging over ℓ in all directions. This is not always possible with the stars, as the star separations are not necessarily isotropic and some of the ℓ -bins may be populated by stars distributed towards one particular direction. Both of these effects do not affect the submillimetre observations, where all the scales of at least one half of the map size are isotropically sampled.

The observations of starlight and submillimetre polarization included in this study are not sufficient to constrain α_M ,

f_M , and γ towards the studied regions. However, the behavior of $S_2(\ell)$ in the polarization models illustrates that the spatial distribution of the starlight polarization observations can significantly affect the values of $S_2^{\text{star}}(\ell)$. This is significant for the studies of the MC-scale magnetic field strengths calculated with the Davi-Chandrasekhar-Fermi method (DCF, Davis 1951; Chandrasekhar & Fermi 1953).

5.3.3. Dispersion of polarization angles and magnetic field strength

In the DCF method, the calculated field strengths depend on the dispersion of the polarization angles, which is estimated directly using $\varsigma_{\psi_{\text{star}}}$ (Chandrasekhar & Fermi 1953) or using $S_2(\ell)$ (Hildebrand et al. 2009; Houde et al. 2009), the velocity dispersion, and the mean density in the considered region (for a detailed description, see Appendix D of Planck Collaboration Int. XXXV 2016). As observed in the vicinity of the $S_2(\ell)$ analyses, the values of $\varsigma_{\psi_{\text{star}}}$ and $S_2(\ell)$

can be affected by the number and the distribution of starlight polarization observations. Particularly towards the Pipe and the Taurus regions, it is evident that the considerable agreement between $S_2^{\text{star}}(\ell)$ and $S_2^{\text{submm}}(\ell)$, does not imply that the dispersion of the polarization angles is representative of the behavior of $S_2(\ell)$ obtained with a larger number of observations towards the same region, $S_2^{\text{all submm}}(\ell)$.

Towards the Taurus region, $S_2^{\text{submm}}(\ell)$ is unexpectedly larger than $S_2^{\text{star}}(\ell)$ in the range $50' < \ell < 90'$, thus producing $\delta S_2(\ell) < 0$ and imaginary values of $\Delta S_2(\ell)$. This is due to the low number of observations in this range of separations, even after we included stars in the Heiles (2000) catalog to increase the sampling in the aforementioned ℓ -range, hence, we did not further consider this region in the discussion of $S_2(\ell)$.

Towards the Pipe nebula, $S_2^{\text{star}}(\ell)$ and $S_2^{\text{submm}}(\ell)$ show the presence of the jitter at multiple scales. The values of $\Delta S_2(\ell)$ also show jitter, including the two ℓ -ranges around $\ell \approx 90'$ and $\ell \approx 110'$ where $\delta S_2(\ell) < 0$. At $\ell > 10'$, $\Delta S_2(\ell)$ is in average $7:8$.

In this region and at $\ell > 10'$, $S_2^{\text{all submm}}(\ell)$ has a considerably different slope than $S_2^{\text{star}}(\ell)$ and $S_2^{\text{submm}}(\ell)$. This implies that $S_2^{\text{submm}}(\ell)$ corresponds to a component of $\langle \hat{\mathbf{B}}_{\perp} \rangle$ that is not dominant over most of the region, since the analysis of the polarization models indicates that the sampling of LOSs does not reproduce the differences between $S_2^{\text{submm}}(\ell)$ and $S_2^{\text{all submm}}(\ell)$.

If one considers only $S_2^{\text{star}}(\ell)$ and $S_2^{\text{submm}}(\ell)$, the angle dispersion term in the DCF method, which is directly related to the y -axis intercept of a Taylor series fit to the large scale component of the $S_2(\ell)$ functions (Houde et al. 2009, 2016), the MC-scale magnetic field strength computed from the *Planck* 353 GHz polarization observations would be about 15% larger than one inferred from the starlight polarization observations. This estimate does not take into account the fact that the velocity dispersion may change when considering observations with higher angular resolution, but show that the increase in the angular resolution of polarization observations towards this region does not substantially change the results of the DCF method.

Towards Lupus I, both $S_2^{\text{star}}(\ell)$ and $S_2^{\text{submm}}(\ell)$ present jitter, but in contrast with the Pipe nebula, $S_2^{\text{star}}(\ell)$ and $S_2^{\text{submm}}(\ell)$ are close to $S_2^{\text{all submm}}(\ell)$ at $\ell > 0'$. The average value of $\Delta S_2(\ell)$ at $\ell > 10'$ is $14:7$, with large variations at $\ell \approx 80'$ and $\ell > 100'$. Following the same consideration described for the Pipe nebula, the MC-scale magnetic field strength computed from the *Planck* 353 GHz polarization observations would be about 12% larger than one inferred from the starlight polarization observations.

Towards Musca, $S_2^{\text{star}}(\ell)$ and $S_2^{\text{submm}}(\ell)$ are less affected by the jitter, as found in the polarization model with the largest amount of spatial correlations. The values of $S_2^{\text{submm}}(\ell)$ are close to $S_2^{\text{all submm}}(\ell)$. The values of $\Delta S_2(\ell)$ are also not significantly affected by the jitter and are in average $7:7$. In contrast with the aforementioned regions, the low average values of $S_2^{\text{star}}(\ell)$ and $S_2^{\text{submm}}(\ell)$ at $\ell > 10$ produce a larger relative difference, about 70%, between the field strengths estimated with the DCF method towards this region.

6. Conclusions

In this work we compared the orientation of the interstellar magnetic field averaged along the LOS and projected on the plane of the sky inferred from starlight and submillimetre polarization towards four nearby MCs. We found that the difference in the field orientation sampled in emission and extinction is on average less than 5° , thus suggesting considerable agreement between the

$\langle \hat{\mathbf{B}}_{\perp} \rangle$ orientations estimated with both techniques at comparable scales.

We evaluated the dispersion of the $\langle \hat{\mathbf{B}}_{\perp} \rangle$ orientation, $\varsigma_{\psi_{\text{star}}}$, inferred from starlight polarization within regions with the same area as the 353 GHz *Planck* effective beam. We found that the values of $\varsigma_{\psi_{\text{star}}}$ are on average less than 20° . This result is in rough agreement with the values found using the angular structure function, $S_2(\ell)$, at scales below the size of the *Planck* beam $\ell < 10'$. Given the current lack of information on the distance to the majority of the stars in the present work, the conclusions on the magnetic field morphology in and beyond the cloud remains open. However, we will deepen the study of the relation between p_{star} and P_{submm} and the effect of dust grain alignment in a separate publication (Alves et al., in prep.).

We found that a Gaussian model of the turbulent structure of the magnetic field, introduced in Sect. 3, reproduces the values of $\varsigma_{\psi_{\text{star}}}$ and $\varsigma_{p_{\text{star}}}/\bar{p}_{\text{star}}$ towards the observed regions. The correlation between these two quantities, shown in Fig. 5, is not possible to reproduce in terms of the dust grain alignment efficiency alone. This extends the results of *Planck Collaboration Int. XX (2015)* to the high angular resolution accessible through the starlight polarization observations, suggesting that $\varsigma_{\psi_{\text{star}}}$ and $\varsigma_{p_{\text{star}}}/\bar{p}_{\text{star}}$ at these gas column densities, $N_{\text{H}} < 10^{22} \text{ cm}^{-2}$, is mainly produced by fluctuations in the magnetic field structure, rather than to changes in grain shape and/or the efficiency of grain alignment.

In terms of $S_2(\ell)$, we also found a significant amount of structure at scales lower than the size of the *Planck* beam, represented in differences $\Delta S_2(\ell)$ up to $20:7$. This structure is also reproduced by the Gaussian model and can be explained in terms of the magnetic field structure and the difference in angular resolution between both types of observations.

At scales larger than the size of the *Planck* beam, $\ell > 10'$, we found very good agreement between $S_2^{\text{star}}(\ell)$ and $S_2^{\text{submm}}(\ell)$. However, we found that the number and distribution of starlight polarization observations introduce oscillatory features, or jitter, in $S_2(\ell)$, which are not present when $S_2(\ell)$ is calculated with a larger number of randomly-distributed observations, as it is now possible with the *Planck* observations.

The $S_2(\ell)$ analysis of the Gaussian polarization models indicates that the differences between $S_2^{\text{star}}(\ell)$ and $S_2^{\text{submm}}(\ell)$ depend on both the difference in the angular resolutions between the two types of polarization observation and the structure of the magnetic field. When the field has a low amount of spatial correlations; as it is the case if the power spectrum of the turbulent field is relatively flat, or the turbulent field is relatively large with respect to the mean field, or the inclination of the mean with respect to the plane of the sky is relatively large; the differences between the observations at different angular resolutions can be large, even if the two techniques are sampling the same field.

Despite the presence of the jitter and the differences between $S_2^{\text{submm}}(\ell)$ and $S_2^{\text{all submm}}(\ell)$ towards some of the regions, this study indicates that the increase in angular resolution, which is possible with the starlight polarization observations, indicates that the field structure in scales below that of the *Planck* beam would not introduce significant corrections to the MC-scale magnetic field strengths estimated in *Planck Collaboration Int. XXXV (2016)*.

We started this study looking to identify the effect of the angular resolution of the *Planck* beam and constrain the portion of the line of sight that is responsible for the field orientations inferred from the *Planck* 353 GHz observations. We found magnetic field structure at scales below size of the *Planck* beam and considerable agreement between both techniques at scales where they are comparable. The question of the line of sight depth

remains open, but soon, the advent of the catalog of distance observations by ESA's *Gaia* satellite (Lindegren 2010) will enable the study of the magnetic field morphology in different segments of the line of sight by correlating the distance to the stars to their polarization orientation.

Acknowledgements. We thank the referee for a useful and constructive report. We gratefully acknowledge M. Houde for his helpful comments on the manuscript. This work was possible through the funding from the European Research Council under the European Community's Seventh Framework Programme (FP7/2007-2013 Grant Agreement No. 306483 and No. 291294). GAPF is partially supported by the Brazilian agencies FAPEMIG and CNPq.

References

- Alves, F. O., & Franco, G. A. P. 2007, *A&A*, 470, 597
- Andersson, B.-G., Lazarian, A., & Vaillancourt, J. E. 2015, *ARA&A*, 53, 501
- Bergin, E. A., & Tafalla, M. 2007, *ARA&A*, 45, 339
- Cabral, B., & Leedom, L. C. 1993, in *Special Interest Group on GRAPHics and Interactive Techniques Proceedings*, 263
- Chandrasekhar, S., & Fermi, E. 1953, *ApJ*, 118, 113
- Chapman, N. L., Goldsmith, P. F., Pineda, J. L., et al. 2011, *ApJ*, 741, 21
- Clemens, D. P., Sarcia, D., Grabau, A., et al. 2007, *PASP*, 119, 1385
- Crutcher, R. M. 2012, *ARA&A*, 50, 29
- Dame, T. M., Hartmann, D., & Thaddeus, P. 2001, *ApJ*, 547, 792
- Davis, L. 1951, *Phys. Rev.*, 81, 890
- Davis, Jr., L., & Greenstein, J. L. 1951, *ApJ*, 114, 206
- Falceta-Gonçalves, D., Lazarian, A., & Kowal, G. 2008, *ApJ*, 679, 537
- Franco, G. A. P., & Alves, F. O. 2015, *ApJ*, 807, 5
- Franco, G. A. P., Alves, F. O., & Girart, J. M. 2010, *ApJ*, 723, 146
- Gaczkowski, B., Preibisch, T., Stanke, T., et al. 2015, *A&A*, 584, A36
- Górski, K. M., Hivon, E., Banday, A. J., et al. 2005, *ApJ*, 622, 759
- Hamaker, J. P., & Bregman, J. D. 1996, *A&AS*, 117, 161
- Heiles, C. 2000, *AJ*, 119, 923
- Hildebrand, R. H. 1988, *Roy. Astron. Soc. Quant. J.*, 29, 327
- Hildebrand, R. H., Kirby, L., Dotson, J. L., Houde, M., & Vaillancourt, J. E. 2009, *ApJ*, 696, 567
- Hiltner, W. A. 1949, *Science*, 109, 165
- Houde, M., Hull, C. L. H., Plambeck, R. L., Vaillancourt, J. E., & Hildebrand, R. H. 2016, *ApJ*, 820, 38
- Houde, M., Vaillancourt, J. E., Hildebrand, R. H., Chitsazzadeh, S., & Kirby, L. 2009, *ApJ*, 706, 1504
- Kenyon, S. J., Gómez, M., & Whitney, B. A. 2008, in *Handbook of Star Forming Regions*, Vol. I, ASP Monograph Publ., ed. B. Reipurth, 405
- Kobulnicky, H. A., Molnar, L. A., & Jones, T. J. 1994, *AJ*, 107, 1433
- Lamarre, J., Puget, J., Ade, P. A. R., et al. 2010, *A&A*, 520, A9
- Lazarian, A., & Hoang, T. 2007, *MNRAS*, 378, 910
- Lindegren, L. 2010, in *Relativity in Fundamental Astronomy: Dynamics, Reference Frames, and Data Analysis*, eds. S. A. Klioner, P. K. Seidelmann, & M. H. Soffel, *IAU Symp.*, 261, 296
- Luhman, K. L. 2008, *Handbook of Star Forming Regions*, Vol. II, ASP Monograph Publ., ed. B. Reipurth, 169
- Magalhaes, A. M., Rodrigues, C. V., Margoniner, V. E., Pereyra, A., & Heathcote, S. 1996, in *Polarimetry of the Interstellar Medium*, eds. W. G. Roberge, & D. C. B. Whittet, *ASP Conf. Ser.*, 97, 118
- Martin, P. G., Roy, A., Bontemps, S., et al. 2012, *ApJ*, 751, 28
- McKee, C. F., & Ostriker, E. C. 2007, *ARA&A*, 45, 565
- Montier, L., Plaszczyński, S., Levrier, F., et al. 2015, *A&A*, 574, A136
- Naghizadeh-Khouei, J., & Clarke, D. 1993, *A&A*, 274, 968
- Palmeirim, P., André, P., Kirk, J., et al. 2013, *A&A*, 550, A38
- Paradis, D., Dobashi, K., Shimoikura, T., et al. 2012, *A&A*, 543, A103
- Pereyra, A., & Magalhães, A. M. 2004, *ApJ*, 603, 584
- Planck Collaboration XXIV. 2011, *A&A*, 536, A24
- Planck Collaboration I. 2014, *A&A*, 571, A1
- Planck Collaboration XI. 2014, *A&A*, 571, A11
- Planck Collaboration I. 2016, *A&A*, 594, A1
- Planck Collaboration Int. XIX. 2015, *A&A*, 576, A104
- Planck Collaboration Int. XX. 2015, *A&A*, 576, A105
- Planck Collaboration Int. XXI. 2015, *A&A*, 576, A106
- Planck Collaboration Int. XXIX. 2016, *A&A*, 586, A132
- Planck Collaboration Int. XXXII. 2016, *A&A*, 586, A135
- Planck Collaboration Int. XXXIII. 2016, *A&A*, 586, A136
- Planck Collaboration Int. XXXV. 2016, *A&A*, 586, A138
- Planck Collaboration Int. XLIV. 2016, *A&A*, in press [[arXiv:1604.01029](https://arxiv.org/abs/1604.01029)]
- Rygl, K. L. J., Benedettini, M., Schisano, E., et al. 2013, *A&A*, 549, L1
- Schlafly, E. F., Green, G., Finkbeiner, D. P., et al. 2014, *ApJ*, 786, 29
- Serkowski, K. 1958, *Acta Astron.*, 8, 135
- Soler, J. D., Hennebelle, P., Martin, P. G., et al. 2013, *ApJ*, 774, 128

Appendix A: Histogram of relative orientations

In the main part of this work, we showed how the $\langle \hat{\mathbf{B}}_{\perp} \rangle$ orientations inferred from starlight polarization observations follow closely those inferred from the *Planck* observations when compared at the scale of $10'$, within approximately 5° . In this appendix, we evaluate if the $\langle \hat{\mathbf{B}}_{\perp}^{\text{star}} \rangle$ observations can also be used to recover the trends found in the relative orientation of the magnetic field with respect to the column density structures reported in [Planck Collaboration Int. XXXV \(2016\)](#).

For that purpose we used the histogram of relative orientations (HRO) technique introduced in [Soler et al. \(2013\)](#) and [Planck Collaboration Int. XXXV \(2016\)](#), where the orientations of the column density structures are characterized by their gradients, which are by definition perpendicular to the iso-column density contours. Here as in [Planck Collaboration Int. XXXV \(2016\)](#) we used τ_{353} as a proxy for N_{H} (Sect. 2.2). The angle θ between $\langle \hat{\mathbf{B}}_{\perp} \rangle$ and the tangent to the τ_{353} contours is evaluated using

$$\theta = \arctan \left(\frac{|\nabla \tau_{353} \times \hat{\mathbf{E}}|}{\nabla \tau_{353} \cdot \hat{\mathbf{E}}} \right), \quad (\text{A.1})$$

where $\nabla \tau_{353}$ is perpendicular to the tangent of the iso- τ_{353} contours, the orientation of the unit polarization pseudo-vector $\hat{\mathbf{E}}$, perpendicular to $\langle \hat{\mathbf{B}}_{\perp} \rangle$, is characterized by the polarization angle ϕ_{submm} . In Eq. (A.1), as implemented, the norm actually carries a sign when the range used for θ is between -90° and 90° .

We directly evaluated the relative orientations using both starlight and submillimetre polarization towards the four considered MCs, although the number of observations and their dynamic range in N_{H} values clearly limits the direct comparison with the results of [Planck Collaboration Int. XXXV \(2016\)](#).

Figure A.1 presents the HROs corresponding to LOSs with starlight polarization observations and $\log_{10}(N_{\text{H}}/\text{cm}^{-2}) < 21.6$ towards Lupus I, the region where the starlight polarization statistics were sufficient to produce a HRO consistent with what is found over the whole map with the *Planck* observations

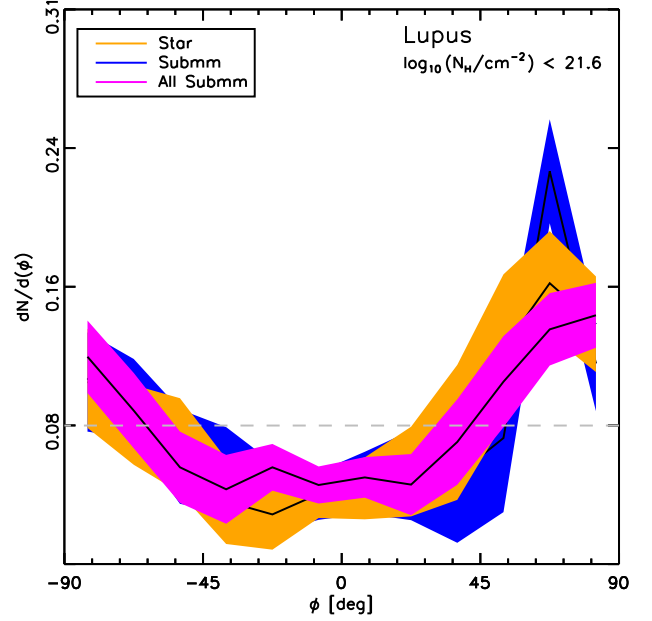


Fig. A.1. Histograms of relative orientations between $\langle \hat{\mathbf{B}}_{\perp} \rangle$ and the iso- τ_{353} contours towards Lupus. Histograms peaking at 90° and/or -90° correspond to $\langle \hat{\mathbf{B}}_{\perp} \rangle$ predominantly perpendicular to iso- τ_{353} contours. In contrast with [Planck Collaboration Int. XXXV \(2016\)](#), the error bars are estimated by sampling of a Gaussian polarization model, including – by construction – spatial correlations which are absent when considering simple Poissonian statistics.

in the same column density regime. Despite the fact that previous studies have reported on relative orientation trends towards these regions using starlight polarization observations ([Palmeirim et al. 2013](#); [Franco & Alves 2015](#)), the systematic study of the change of relative orientation is for the moment only possible with the large statistics provided by the submillimetre polarization observations by *Planck*.