



Improving collection efforts to avoid loss of biodiversity: lessons from comprehensive sampling of lycophytes and ferns in the subtropical Atlantic Forest

André Luís de Gasper^{1,2*}, Pedro V. Eisenlohr³ and Alexandre Salino²

Received: November 9, 2015

Accepted: February 2, 2016

ABSTRACT

Estimating species richness with herbarium data and new collections allows us to understand the distribution of diversity. We investigated the accuracy of lycophyte and fern sampling along a vegetation gradient in the subtropical Atlantic Forest in southern Brazil. We compiled lycophyte and fern collection metadata and estimated species richness and assessed sampling accuracy for sixty 50 x 50 km units using ACE, Chao 1, Chao 2, Jackknife 1 and Jackknife 2 estimators. We compiled data for 12,779 fern specimens of 441 species, 67 of which were sampled in only one unit (singletons) and 35 in two units (duplicates). Of the 60 units examined, only 11 had observed values that were above 70% of their estimated values, and 14 had observed levels between 65-70% of the estimated values, meaning that 35 units had a sampling accuracy of less than 65%. In spite of the long history of lycophyte and fern collecting in the study area, there remain units with a lower than expected sampling accuracy for a subtropical forest. This finding indicates that a sizeable collection effort is needed in order to discover the actual distribution of species before the effects of fragmentation and deforestation become permanent.

Keywords: botanical collections, estimators, hotspot, pteridophyte, southern Brazil, species richness estimates

Introduction

The worldwide interest in biodiversity issues has been unhesitatingly growing (Lughadha 2004; Lewinsohn & Prado 2005; Condon *et al.* 2008; Butchart *et al.* 2010; Barbault 2011; May 2011), manifested especially in the compilation of large surveys and lists of species (see Zuloaga *et al.* 2008; Forzza *et al.* 2012). However, most of the datasets are still spatially and taxonomically biased (Hortal *et al.* 2008; Sastre & Lobo 2009), especially when different sources are used, such as botanical collections. Nevertheless, these collections comprise key tools for ecological studies (Sánchez-Fernández

et al. 2008; Maldonado *et al.* 2015), especially where the original vegetation still exists. Large on-line databases on biological diversity such as speciesLink (CRIA 2015) and The Global Biodiversity Information Facility (GBIF) can contribute to further analysis such as species modeling and geographical distribution (Feeley & Silman 2011) because they host data from various collections. In addition to the large amount of data currently available, both scrutiny and validation by taxonomic experts need to be done to ensure data quality (Maldonado *et al.* 2015).

Furthermore, these tools can help to identify insufficient sampling and gaps (Pyke & Ehrlich 2010; Maldonado *et al.*

¹ Departamento de Ciências Naturais, Universidade Regional de Blumenau, Rua Antônio da Veiga, 140, T-226, 89012-900, Blumenau, SC, Brazil

² Departamento de Botânica, Universidade Federal de Minas Gerais, P.O. Box 486, 30123-970, Belo Horizonte, MG, Brazil

³ Faculdade de Ciências Biológicas e Agrárias, Campus de Alta Floresta, Universidade do Estado de Mato Grosso, P.O. Box 324, 78580-000, Alta Floresta, MT, Brazil

* Corresponding author: algasper@gmail.com

2015), especially in tropical areas and biodiversity hotspots. Deforestation (Pandit *et al.* 2007), forest fragmentation (Rodríguez-Loinaz *et al.* 2011; Silva *et al.* 2014), human disturbances (Murphy & Romanuk 2014), undiscovered species (Tedesco *et al.* 2014), and climate changes (Urban 2015) are some of the threats to biodiversity (Kim & Byrne 2006; Butchart *et al.* 2010), and all of these threats occur in the Brazilian Atlantic Forest. This biome has critical conservation status (as other hotspots; Sloan *et al.* 2014), having only ~12% of the original vegetation cover (Ribeiro *et al.* 2011), and deforestation continues (Fundação SOS Mata Atlântica & Instituto Nacional de Pesquisas Espaciais 2009).

In high-diversity regions, such as Brazil, two of the botanical groups that need more attention regarding sampling coverage are the lycophytes and ferns. In the Red Book of the Brazilian Flora (Martinelli & Moraes 2013), both groups are the most threatened when the estimated number of species in each taxon is considered. Despite this fact, the state of Santa Catarina has a well-known lycophyte and fern flora, as shown by large surveys such as the projects of Flora of Santa Catarina (1967-1984) and the Floristic and Forest Inventory of Santa Catarina (Vibrans *et al.* 2010; Gasper *et al.* 2012). However, even with these large projects, many areas were not sampled. The first project has approximately 180 collection points, the second has 597. Another concern is the time interval between these projects, because during this interval the forest loss increased (Fundação SOS Mata Atlântica & Instituto Nacional de Pesquisas Espaciais 2009). Because of these kinds of initiatives, and also due its physiognomic gradients, Santa Catarina constitutes an excellent environmental model for investigation of floral distribution and sampling sufficiency (see also Rezende *et al.* 2014; 2015; Gasper *et al.* 2015).

Our aim was to analyze the sampling of lycophytes and ferns, evaluating both insufficiently and sufficiently sampled areas in Santa Catarina, Brazil, to discuss efforts for attaining more accurate samplings. We were guided by the following questions: 1) Even when a region was well-studied, with standardized sampling units, could we see important collection gaps (insufficiencies) for lycophytes and ferns? We addressed this question based on richness estimators, which are powerful tools to check for sampling accuracy (Chiarucci *et al.* 2003); 2) What are the geographic regions with a more complete sampling effort and what are the ones with inadequate collections? We expected that the coastal region, where Rainforest dominates, would contain the most well-known vegetation, followed by the plateau (Mixed Forest) and western region (Seasonal Forest), because, in spite of major projects conducted statewide, many collections have been made near protected areas and universities, and in the coastal region there is a higher concentration of these institutions. We discuss these issues in light of conservation implications of under-sampling the biodiversity in high-diversity and high-threatened regions.

Materials and methods

Study area

The state of Santa Catarina is located in Southern Brazil, between 25°57'41" - 29°23'55"S and 48°19'37" - 53°50'00"W (Fig. 1). The climate is mesothermal and rather humid in the Southern Plateau (Cfb according to the Köppen classification) and humid subtropical along the coast and in the Atlantic Slope (Cfa according to the Köppen classification), with very high temperatures (Klein 1984). Nimer (1989) considered the region to be a temperate zone, with high cloud formation and rainfall regimes, the annual rainfall ranging from 1,250 mm to 2,000 mm. There are two very distinct seasons: cold winter and hot summer (Klein 1984). The first extends from June to August and the second, from December to March.

Santa Catarina is covered by the Subtropical Atlantic Forest and its phytoecological zones are: Seasonal Semideciduous Forest, in the Uruguay River channel; Mixed Forest (*Araucaria* Forest), on the plateau and in the western region of Santa Catarina; Rainforest as well as the fluvial and marine influence zones towards its coast (Mangrove and Coastal Dwarf Forest, respectively) (IBGE 1992; Oliveira-Filho 2009).

Data compilation

We used the same criteria adopted by Gasper *et al.* (2015) to delimit the sample units (SU) and compile the database, which had 12,779 lycophyte and fern records in Santa Catarina (Fig. 2), with all units represented by at least five samples. Of the registered species, three did not inform the municipality (Santa Catarina State only indicated) and were removed from the analysis. We prepared the database with the information of collections done in Santa Catarina. The botanical material was deposited in the following herbaria: ASE, B, BHCB, BM, BOTU, CRI, ESA, F, FCAB, FIC, FLOR, FUEL, FURB, G, GH, GUA, HAS, HB, HBR, HCF, HRCB, HSJRP, HUCS, HUEFS, ICN, INPA, IRAI, JOI, JPB, K, LIL, MBM, MO, NY, P, PACA, R, RB, RBR, RJ, S, SP, SPE, UB, UC, UEC, UPBC and US (Thiers 2015), the IFFSC project (Vibrans *et al.* 2010), the 'Pteridófitas da Mata Atlântica' project (part of the dataset was compiled by Salino & Almeida 2009) and speciesLink (CRIA 2015). All information on the specimen labels was digitized. Theses and dissertations were used to compare the identifications in the herbaria with the database. Material that could be not checked for accuracy of identification was not considered in our analysis. Herbarium duplicates (same collector and number) were removed in order to avoid overestimates. We constructed two matrices: (i) a matrix with scientific names as well as longitude and latitude coordinates; (ii) a binary matrix (record presence or absence) by sampling



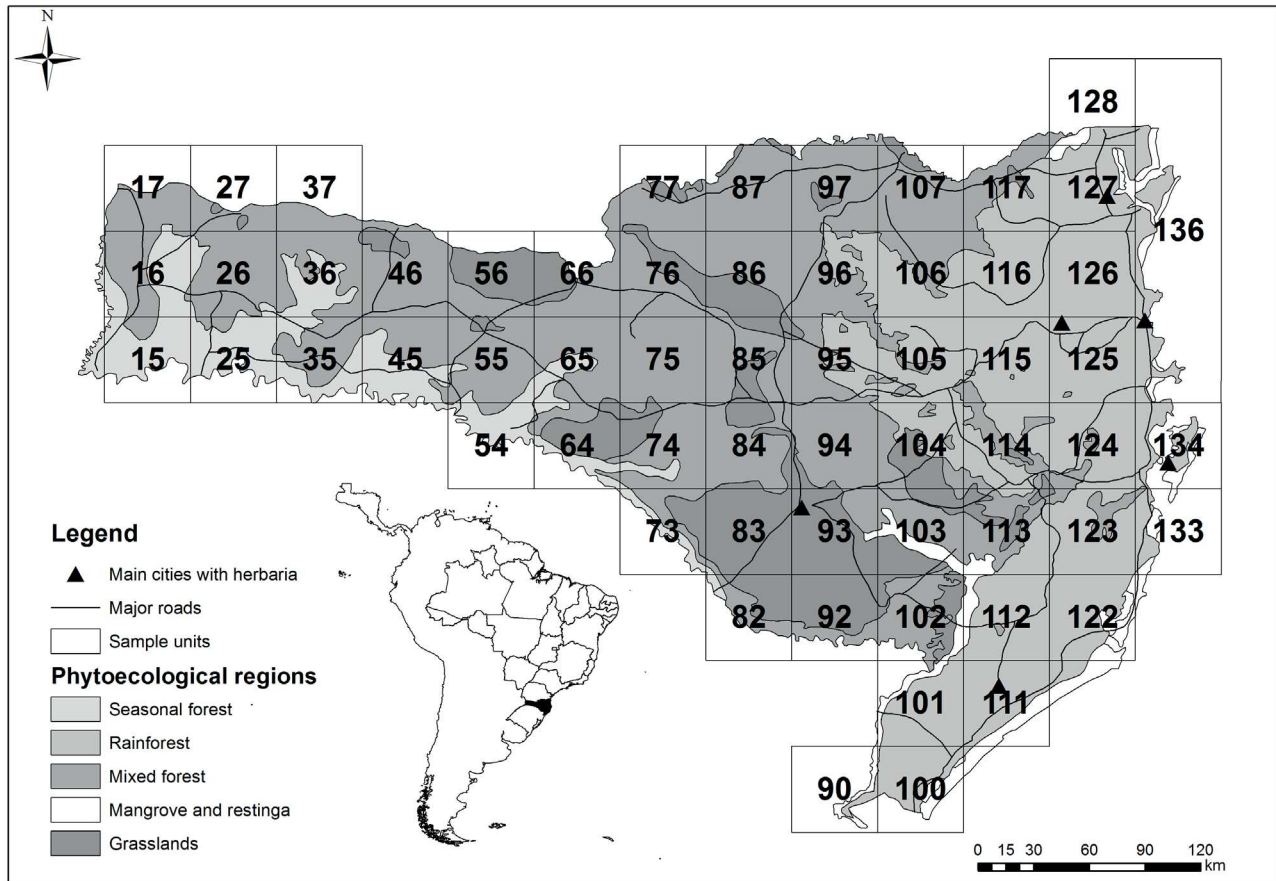


Figure 1. Distribution of sample units (SU) across phytoecological regions in a sector of the Subtropical Atlantic Forest. Number of 50 x 50 km sample units in the grid distributed in a sector of the Subtropical Atlantic Forest, generated through Hawth's Tools in ArcGIS 10.

unit. The first matrix was used to map the distribution of specimens and proceed with the grid estimators, and the second was used to estimate sampling effort. The coordinate used was the original one, or when the coordinate was lacking in the samples, we added a coordinate based on the collection locality (using other collections), or based on the municipality coordinates. The municipalities of Santa Catarina are small; thus, when a coordinate was provided, the probability of changing the original SU was reduced.

The layout and analysis maps of sample units were developed using ArcGIS® 10 software (ESRI 2011) and estimators grids in DIVA-GIS 7.5 (Hijmans *et al.* 2005). From the 60 sample units (Fig. 1), we obtained the sample number and the species number using the intersect function of ArcGIS® 10.

Data analysis

We estimated the sampling accuracy with ACE (ACE), Chao 1 (C1), Chao 2 (C2), Jackknife 1 (J1) and Jackknife 2 (J2) non-parametric estimators. These estimators can help in diversity estimates in studies with grids or plots, extrapolating total species richness from an incomplete sample of a biological community (Walther & Moore 2005),

because they use unicates/singletons and duplicates/doubletons in their equations (Colwell & Coddington 1994). The Jackknife 1 is based on the presence of uniques in sampling units, defined as the species recorded in only one sampling unit, and Jackknife 2 considers also the duplicates, i.e., species that occur in exactly two samples (Chiarucci *et al.* 2003). The Chao 1 considers both singletons and doubletons, i.e., the number of species that have exactly one and two individuals (here, the number of records within a sampling unit), respectively, and Chao 2 considers both uniques and duplicates (Chao 1984; Chao & Lee 1992; Colwell & Coddington 1994). ACE is an abundance-based coverage estimator that considers species with 1-10 individuals (in our case, collections) plus the abundant species (>10 individuals) (Chao & Lee 1992; Colwell & Coddington 1994). All estimators assume that the higher the number of species poorly represented, the more likely is the occurrence of some other species in the area that are not represented at all in the data set.

We calculated the estimators for each SU independently, using DIVA-GIS (Hijmans *et al.* 2005) and a shapefile. Note that DIVA-GIS software considers as abundance data the number of records within each sampling unit, although the original matrix was based only on presence/absence records.

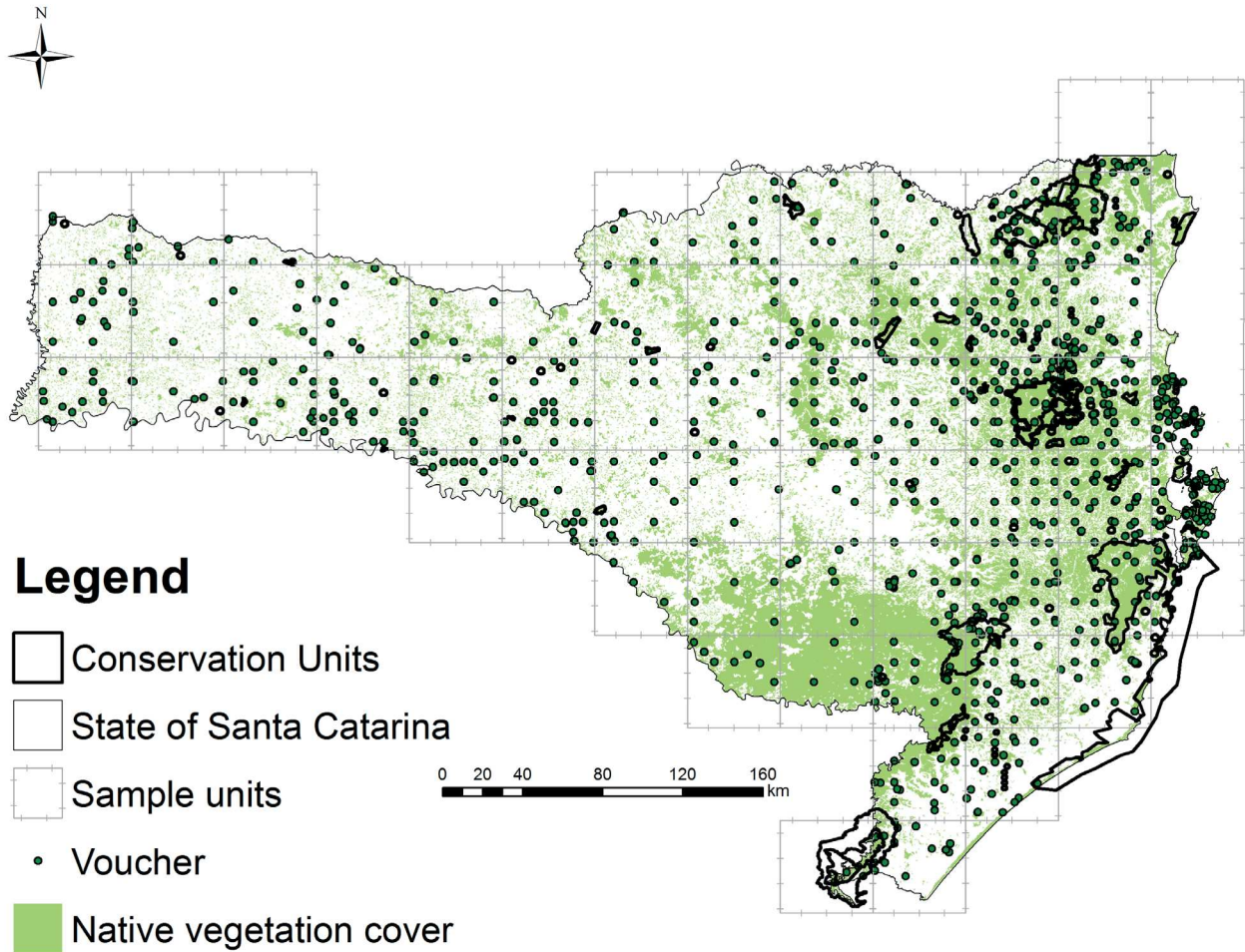


Figure 2. Records of lycophytes and ferns in a sector of the Subtropical Atlantic Forest.

For all studied areas we used EstimateS 9.1 (Colwell 2013). We considered a SU to be well-sampled when we found at least 60% of the estimated value compared to the observed value, according to the aforementioned estimators (near to the value recommended by Heck Jr *et al.* 1975 and Jiménez-Valverde & Hortal 2003). This can be justified because when the records performed in these 20 SUs were discarded, none of the species was removed from the general list. Hence, no species recorded in these 20 SU was different when compared with the other 40.

Results

Considering the entire state of Santa Catarina, the estimators showed values between 466 and 535 species (Tab. 1). For some SU, the observed values reached 70% of the estimated values, except for J2, where no SU had more than 67% (Fig. 3, Tab. 1). Considering the 60% cut-off value, we found a value between four and 27 SU well-sampled (Tab. 2). The western region, where Seasonal Forest predominates, had lower richness and a poor sampling accuracy, which

was almost achieved in two other SU (15 and 16). This also occurred in Santa Catarina plateau (Mixed Forest) and ecotones with grasslands. The coastal region, where Rainforest predominates, showed the highest richness values. The coastal region also had the highest number of registered collections (Fig. 2).

Eleven out of 60 SU tested showed values above 70% in relation to the estimated richness values (using Jackknife 1), and 14 other SU had levels between 65-70%. In addition, 15 SU had values between 60-65%; 67% of the SU had values above 60%, which was the cutoff used here to consider a SU accurately sampled. Twenty SU had an estimated value below 60% in relation to the observed one. Among the minimum values of five and maximum of 248 species recorded in the SU, the values estimated with Jackknife 1 were nine and 307 species, respectively. Twenty-six SU had species estimated at numbers higher than 100, all of them located near the coastal zone (Tab. 1). Jackknife 2 did not exhibit any area with more than 70% of the observed value (compared to the predicted value), while each of the other indices exhibited more than 10 areas with such characteristics (Fig. 4, Tab. 2).

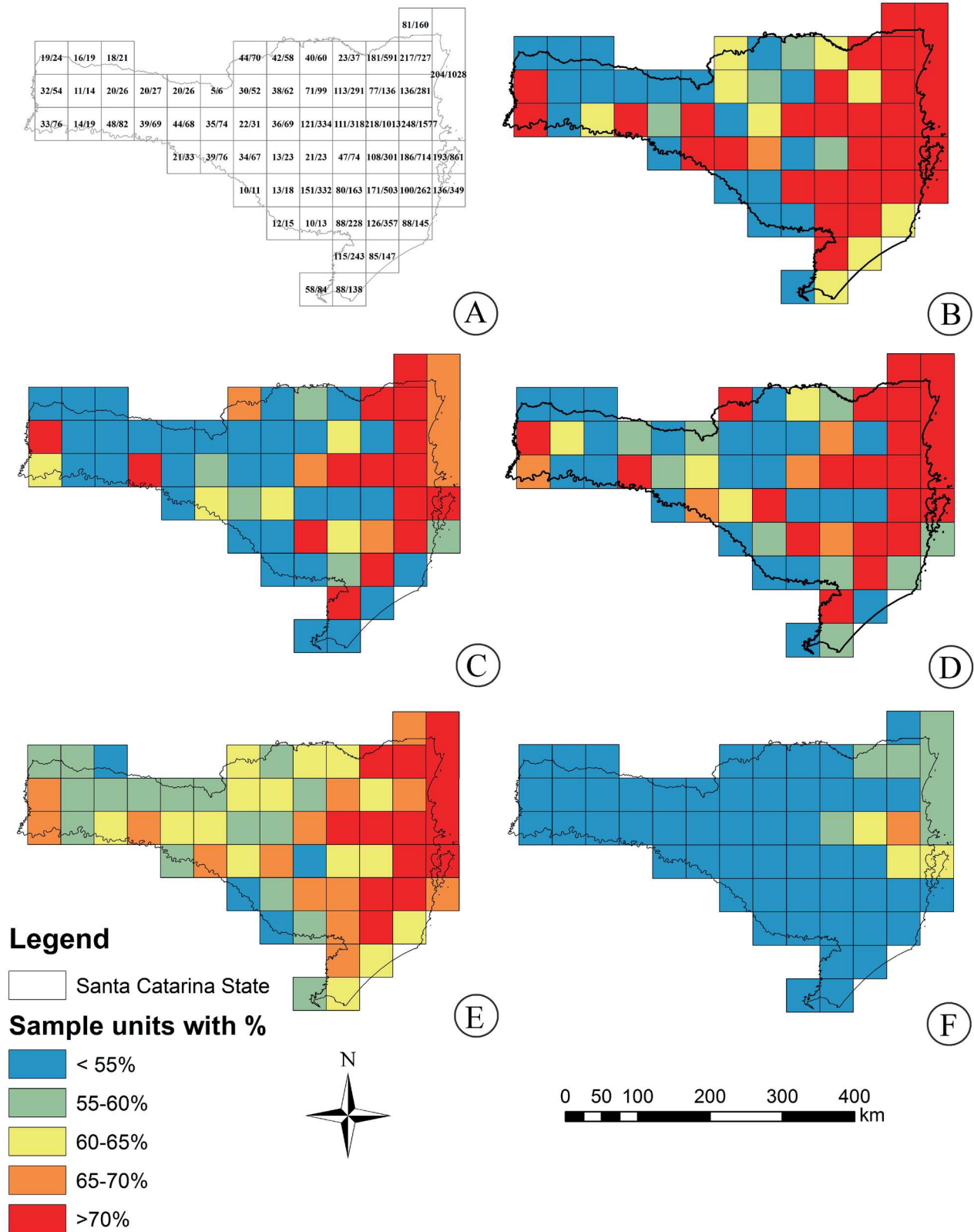


Figure 3. Number of species found in each 50 x 50 km sample unit in a sector of the Subtropical Atlantic Forest (A). The maximum value was 248 species, with 1,578 records. The colors in the SU represent classes of species richness values estimated with: B) ACE, C) Chao 1, D) Chao 2, E) Jackknife 1, and F) Jackknife 2. The ratio of the number of sampled/species is shown. Please see the PDF version for color reference.

Improving collection efforts to avoid loss of biodiversity: lessons from comprehensive sampling of lycophytes and ferns in the subtropical Atlantic Forest

Table 1. Estimated richness obtained for each sample unit in a sector of the Subtropical Atlantic Forest using different estimate methods and percentage values. Collection number (COL), ACE (ACE), Chao 1 (C1), Chao 2 (C2), Jackknife 1 (J1) and Jackknife 2 (J2). Sample units (SU), records (COL), species number (S).

SU	COL	S	ACE	ACE%	C1	C1%	C2	C2%	J1	J1%	J2	J2%
15	76	33	42	78.6	51	64.7	48	68.8	65	50.77	49	67.3
16	54	32	45	71.1	43	74.4	41	78.0	64	50.00	48	66.7
17	24	19	51	37.3	57	33.3	46	41.3	49	38.78	34	55.9
25	19	14	30	46.7	31	45.2	26	53.8	34	41.18	24	58.3
26	14	11	26	42.3	22	50.0	18	61.1	27	40.74	19	57.9
27	19	16	51	31.4	44	36.4	36	44.4	42	38.10	29	55.2
35	82	48	79	60.8	133	36.1	119	40.3	112	42.86	80	60.0
36	26	20	47	42.6	48	41.7	41	48.8	50	40.00	35	57.1
37	21	18	63	28.6	56	32.1	45	40.0	48	37.50	33	54.5
45	69	39	55	70.9	54	72.2	53	73.6	79	49.37	59	66.1
46	27	20	42	47.6	40	50.0	35	57.1	48	41.67	34	58.8
54	33	21	39	53.8	59	35.6	48	43.8	51	41.18	36	58.3
55	68	44	75	58.7	83	53.0	78	56.4	100	44.00	72	61.1
56	26	20	52	38.5	84	23.8	61	32.8	52	38.46	36	55.6
64	76	39	54	72.2	61	63.9	58	67.2	81	48.15	60	65.0
65	74	35	47	74.5	61	57.4	57	61.4	73	47.95	54	64.8
66	6	5	15	33.3	13	38.5	9	55.6	13	38.46	9	55.6
73	11	10	55	18.2	51	19.6	29	34.5	28	35.71	19	52.6
74	67	34	47	72.3	60	56.7	56	60.7	72	47.22	53	64.2
75	31	22	49	44.9	70	31.4	57	38.6	56	39.29	39	56.4
76	52	30	47	63.8	90	33.3	73	41.1	68	44.12	49	61.2
77	70	44	68	64.7	65	67.7	63	69.8	94	46.81	69	63.8
82	15	12	36	33.3	62	19.4	36	33.3	32	37.50	22	54.5
83	18	13	26	50.0	27	48.1	22	59.1	31	41.94	22	59.1
84	23	13	19	68.4	21	61.9	18	72.2	27	48.15	20	65.0
85	69	36	56	64.3	192	18.8	137	26.3	86	41.86	61	59.0
86	62	38	64	59.4	83	45.8	76	50.0	88	43.18	63	60.3
87	58	42	90	46.7	102	41.2	94	44.7	104	40.38	73	57.5
90	84	58	108	53.7	121	47.9	115	50.4	136	42.65	97	59.8
92	13	10	36	27.8	42	23.8	25	40.0	26	38.46	18	55.6
93	332	151	188	80.3	201	75.1	199	75.9	280	53.93	216	69.9
94	23	21	121	17.4	111	18.9	79	26.6	59	35.59	40	52.5
95	334	121	143	84.6	180	67.2	176	68.8	225	53.78	173	69.9
96	99	71	153	46.4	199	35.7	186	38.2	177	40.11	124	57.3
97	60	40	69	58.0	68	58.8	65	61.5	90	44.44	65	61.5
100	138	88	146	60.3	160	55.0	156	56.4	198	44.44	143	61.5



Table 1. Cont.

SU	COL	S	ACE	ACE%	C1	C1%	C2	C2%	J1	J1%	J2	J2%
101	243	115	149	77.2	163	70.6	160	71.9	227	50.66	171	67.3
102	228	88	109	80.7	153	57.5	147	59.9	176	50.00	132	66.7
103	163	80	108	74.1	124	64.5	121	66.1	164	48.78	122	65.6
104	74	47	81	58.0	95	49.5	89	52.8	109	43.12	78	60.3
105	318	111	128	86.7	150	74.0	147	75.5	197	56.35	154	72.1
106	291	113	137	82.5	175	64.6	171	66.1	215	52.56	164	68.9
107	37	23	37	62.2	48	47.9	41	56.1	51	45.10	37	62.2
111	147	85	134	63.4	162	52.5	157	54.1	193	44.04	139	61.2
112	357	126	148	85.1	178	70.8	175	72.0	232	54.31	179	70.4
113	503	171	198	86.4	245	69.8	242	70.7	314	54.46	243	70.4
114	301	108	133	81.2	228	47.4	219	49.3	228	47.37	168	64.3
115	1013	218	232	94.0	274	79.6	272	80.1	353	61.76	286	76.2
116	136	77	120	64.2	152	50.7	146	52.7	175	44.00	126	61.1
117	591	181	202	89.6	230	78.7	228	79.4	308	58.77	245	73.9
122	145	88	140	62.9	161	54.7	156	56.4	196	44.90	142	62.0
123	262	100	119	84.0	142	70.4	139	71.9	184	54.35	142	70.4
124	714	186	202	92.1	231	80.5	230	80.9	307	60.59	247	75.3
125	1577	248	256	96.9	294	84.4	292	84.9	366	67.76	307	80.8
126	281	136	176	77.3	189	72.0	186	73.1	263	51.71	200	68.0
127	727	217	242	89.7	284	76.4	282	77.0	368	58.97	293	74.1
128	160	81	105	77.1	110	73.6	108	75.0	155	52.26	118	68.6
133	349	136	167	81.4	235	57.9	229	59.4	267	50.94	202	67.3
134	861	193	204	94.6	227	85.0	226	85.4	299	64.55	246	78.5
135	1028	204	218	93.6	292	69.9	288	70.8	351	58.12	278	73.4

Discussion

Ferns and lycophytes are the most threatened plant group in Brazilian Flora (Martinelli & Moraes 2013). This threat has many causes, but one of them is habitat loss associated with low sampling efforts (Tedesco *et al.* 2014), especially before the accomplishment of two large surveys, namely the Illustrated Flora of Santa Catarina (Reitz 1965) and IFFSC (Vibrans *et al.* 2010). This kind of survey can dramatically increase the number of recorded species, which recently occurred in Minas Gerais and Espírito Santo (T.E. Almeida, personal communication). These surveys made Santa Catarina a region with an even distribution of samples for angiosperms (Sousa-Baena *et al.* 2014); for lycophytes and ferns, we here found areas with high sampling effort, but others with few collections.

The overall study area was well-sampled, as could be expected for a large study area with standardized sampling units (Jiménez-Valverde & Hortal 2003; Rezende *et al.* 2014). When all data were analyzed together, we found 95% (ACE), 93% (C1), 88% (C2), 87% (J1) and 82% (J2) of fit between estimated and predicted values, thereby indicating that Santa Catarina is well-sampled. However, all values were higher than those reported by List of Species of the Brazilian Flora (2014), which is of 448 species for Santa Catarina. This could be explained at least in part by a few records that we were not able to include in our database, such as those without a herbarium voucher, or because there are new species or records to be sampled. Within Santa Catarina Protected Areas, 4,012 samples and 296 species of lycophytes and ferns were recorded. Seven species were considered as vulnerable, one species was classified as critically endangered, and seven other



Improving collection efforts to avoid loss of biodiversity: lessons from comprehensive sampling of lycophytes and ferns in the subtropical Atlantic Forest

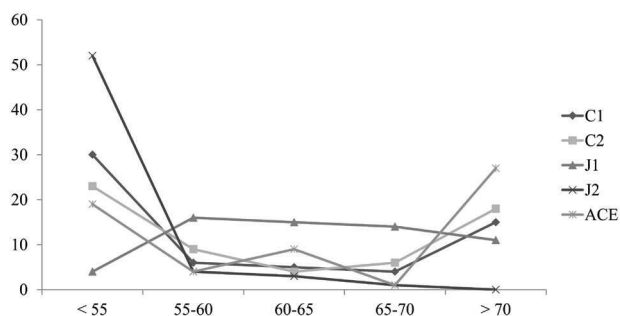


Figure 4. Distribution of 50 x 50 km sample units in a sector of the Subtropical Atlantic Forest, Santa Catarina, Southern Brazil, in each interval and estimators ACE (ACE), Chao 1 (C1), Chao 2 (C2), Jackknife 1 (J1), and Jackknife 2 (J2).

Table 2. Number of 50 km x 50 km sample units and the percentage of observed species in relation to the estimated number of species using different estimators in a sector of the Subtropical Atlantic Forest. ACE (ACE), Chao 1 (C1), Chao 2 (C2), Jackknife 1 (J1) and Jackknife 2 (J2).

% of observed x estimated species	ACE	C1	C2	J1	J2
< 55	19	30	23	4	52
55-60	4	6	9	16	4
60-65	9	5	4	15	3
65-70	1	4	6	14	1
> 70	27	15	18	11	0
Total	60	60	60	60	60

species were categorized as presumed extinct (Gasper & Salino 2015). No large protected area (greater than 20,000 hectares) was found in the central and west parts of the state; such areas are exactly those with few collections and low recorded species.

When we analysed each one of the SU, at least 34% (J1) of them were not well-sampled (< 60% of accuracy). This demonstrates that, even in a state with a tradition of collecting, much remains to be done to achieve satisfactory values for lycophytes and ferns. The data provided by herbarium (the aforementioned institutions), in digital or other formats, are crucial because, together with environmental data, they can help in the delineation of range and species descriptions (MacDougall *et al.* 1998). This information about species distribution is crucial to exploration, use, and conservation (Mutke & Barthlott 2005).

The different geographical areas have different sampling accuracy, but the coastal region was the most thoroughly collected one, followed by the plateau and western regions. Biased sampling occurred in the Rainforest region, where the Floristic and Forest Inventory of Santa Catarina State

(IFFSC) collected epiphytes, a procedure not performed in other regions (Vibrans *et al.* 2010; Cagliioni *et al.* 2012) with high sampling accuracy (> 70% SU in dark gray). The same bias in coastal areas (where the Rainforest occurs) was observed for angiosperms by Sousa-Baena *et al.* (2014). This bias may also be related to the heterogeneity of these SU (Ferrer-Castán & Vetaas 2005), since they cover montane coastal regions (Martinelli 2007), such as the Serra Geral, Serra do Mar, and their valleys (Klein 1980). Several authors indicated the importance of mountainous regions as areas of speciation (Kozak & Wiens 2012) and a favorable microclimate for some species (Holtum 1938; Parris 1985; Jones *et al.* 2011) because of the higher humidity of the region (Nimer 1989); humidity was identified by Gasper *et al.* (2015) as one of the variables that influence the composition of lycophytes and ferns in Santa Catarina. Other variables are the presence of active botanists (MacDougall *et al.* 1998) and available botanical inventories (Ahrends *et al.* 2011).

Most of the sample units (SU) that achieved sample sufficiency are located near universities or protected areas. These areas with a large sample number are concentrated in Rainforest vegetation, like the Serra do Itajaí National Park and the Florianópolis region (capital of Santa Catarina), or in a Mixed Forest plateau region, where some SU are located within the São Joaquim National Park, with 170 species recorded. These areas are generally not easily accessible, at least in their core area. Specific field trips in these areas explain the numerous collections and species richness, unlike easily accessible areas, where the number of samples is low (as in SU 46, 56, and 66), as it would not be attractive to large field expeditions, because of the low vegetation cover (Fig. 2). In these cases, the museum-effect (Nelson *et al.* 1990; MacDougall *et al.* 1998) appears to have had an important impact on some of the species-richest lycophyte and fern areas in Santa Catarina. The same bias in the coastal region was observed by Werneck *et al.* (2011), studying endemic angiosperm species of Atlantic Forest. These authors found that few grid cells were well-surveyed and that the species richness in each cell depended on the sampling effort.

Based on the aforementioned data, it is possible to calculate how many areas would need to be sampled to give researchers the ability to direct collection efforts. For example, it would probably be productive to sample at least the 20 SU that do not have a sufficiency above 60% and discover how much time would be required to achieve such value; in addition, the cost of the field surveys could be ascertained (Soberón & Llorente 1993). Even in a well-sampled area where species are well-identified (which may assist in the extrapolation of data to be applied to poorly sampled areas), sampling inequalities can result in biased and partial descriptions of changes in biodiversity (Hortal *et al.* 2007).

It is essential to begin collecting in these areas since the



forest cover is small and highly fragmented (Fundação SOS Mata Atlântica & Instituto Nacional de Pesquisas Espaciais 2009; Vibrans *et al.* 2013). The rates of forest-cover loss are growing in Santa Catarina (Fundação SOS Mata Atlântica & Instituto Nacional de Pesquisas Espaciais 2009), which directly affects the sampling accuracy found in the state and probably results in species loss (Tedesco *et al.* 2014). Rodríguez-Loinaz *et al.* (2011) showed that fragmentation had a negative effect on the species richness and diversity, especially for ferns. Despite the fact that the number of endemic species was very low (five), the number of uniques was quite high (66). Considering this information, additional efforts should be taken to reduce the number of “rare” species (unicates or singletons), since the higher the number of unicates persisting in the data, the higher the chance that the total species richness has not been reached (Walther & Moore 2005).

We believe that, due the fact that at least 34% of SU did not exhibit an accurate sampling effort, the opportunity to assess the whole of the natural vegetation and its diversity is diminishing. In view of the several studies mentioned, species diversity could have been underestimated not only in Santa Catarina, but across Brazil. Even areas previously considered as well-sampled may actually be undersampled, as demonstrated by Anthelme *et al.* (2011). Therefore, additional sampling effort should be directed towards areas that have not yet reached a minimum value of sampling intensity, here indicated to be between 60-70% for a subtropical zone, in order to improve the floristic sufficiency in each area (in the present case, for lycophytes and ferns), increasing precision and accuracy, and reducing the sampling bias (for further discussion, see Walther & Moore 2005). Well-sampled areas can still contain surprises, such as new records recently documented in certain protected areas (Funez & Gasper 2014), and therefore should not be ignored.

Our study demonstrates the relevance of this approach for conservation of biodiversity, especially in regard to lycophytes and ferns, and might be seen as an additional warning tool in the process of moving towards more accurate sampling. We believe it is necessary to address these points for conservation purposes, since the state of Santa Catarina is a region with one of the greatest rates of loss of forest coverage in Brazil (Fundação SOS Mata Atlântica & Instituto Nacional de Pesquisas Espaciais 2009), and its forests are highly degraded and fragmented (Vibrans *et al.* 2013). Recent deforestation has expanded pastures, agricultural production, and plantations of exotic species, such as pine and eucalyptus, for timber and cellulose. Moreover, addressing these issues may be relevant not only for the state of Santa Catarina, but for the entire Subtropical Atlantic Forest. This study could call attention to the need to improve collection efforts before permanently losing lycophyte and fern biodiversity in the Subtropical Atlantic Forest, indeed even in other ecosystems outside Brazil.

Acknowledgments

The authors thank the Universidade Regional de Blumenau (FURB), Universidade Federal de Minas Gerais (UFMG), CNPq (Conselho Nacional de Desenvolvimento Científico e Tecnológico), and CAPES (Coordenação de Aperfeiçoamento de Pessoal de Nível Superior) for financial support. Additionally, the authors acknowledge CNPq for the productivity grants contributed to AS. AG also offers thanks to FUMDES for current grants. We also thanks Alan Smith for the English review.

References

- Ahrends A, Burgess ND, Gereau RE, *et al.* 2011. Funding begets biodiversity. *Diversity and Distributions* 17: 191-200.
- Anthelme F, Abdoukader A, Viane R. 2011. Are ferns in arid environments underestimated? Contribution from the Saharan Mountains *Journal of Arid Environments* 75: 516-523.
- Barbault R. 2011. A new beginning for biodiversity? *Comptes Rendus Biologies* 334: 483-8.
- Butchart SHM, Walpole M, Collen B, *et al.* 2010. Global biodiversity: indicators of recent declines. *Science* 328: 1164-8.
- Cagliioni E, Bonnet A, Schmitt JL, *et al.* 2012. Epífitos vasculares predominantes em zonas ecológicas de forófitos, Santa Catarina, Brasil. *Revista de Estudos Ambientais* 14: 28-42.
- Chao A. 1984. Nonparametric estimation of the number of classes in a population. *Scandinavian Journal of Statistics* 11: 265-270.
- Chao A, Lee SM. 1992. Estimating the number of classes via sample coverage. *Journal of the American Statistical Association* 87: 210-217.
- Chiarucci A, Enright NJ, Perry GLW, *et al.* 2003. Performance of nonparametric species richness estimators in a high diversity plant community. *Diversity and Distributions* 9: 283-295.
- Colwell RK. 2013. EstimateS: statistical estimation of species richness and shared species from samples. Version 8. User's Guide and application. <http://viceroy.eeb.uconn.edu/estimates> Dec 2014.
- Colwell RK, Coddington JA. 1994. Estimating terrestrial biodiversity through extrapolation. *Philosophical Transactions of the Royal Society of London. Series B, Biological sciences* 345: 101-118.
- Condon M, Scheffer SJ, Lewis ML, Swensen SM. 2008. Hidden neotropical diversity: greater than the sum of its parts. *Science* 320: 928-931.
- CRIA – Centro de Referência em Informação Ambiental. 2015. SpeciesLink. <<http://www.cria.org.br/>>. 01 May 2015.
- ESRI – Environmental Systems Research Institute. 2011. ArcGIS Desktop: Release 10. Redlands, ESRI.
- Feeley KJ, Silman MR. 2011. The data void in modeling current and future distributions of tropical species. *Global Change Biology* 17: 626-630.
- Ferrer-Castán D, Vetaas OR. 2005. Pteridophyte richness, climate and topography in the Iberian Peninsula: comparing spatial and nonspatial models of richness patterns. *Global Ecology and Biogeography* 14:155-165.
- Forzza RC, Baumgratz JFA, Bicudo CEM, *et al.* 2012. New Brazilian floristic list highlights conservation challenges. *Bioscience* 62: 39-45.
- Fundação SOS Mata Atlântica, Instituto Nacional de Pesquisas Espaciais. 2009. Atlas dos remanescentes florestais da Mata Atlântica período 2005-2008. São Paulo, SOS Mata Atlântica/INPE.
- Funez LA, Gasper AL. 2014. Parque Nacional da Serra do Itajaí (southern Brazil) shrub and herbs flora. *Check List* 10: 1249-1259.
- Gasper AL, Eisenlohr PV, Salino A. 2015. Climate-related variables and geographic distance affect fern species composition across a vegetation gradient in a shrinking hotspot. *Plant Ecology & Diversity* 8: 25-35.
- Gasper AL, Salino A, Vibrans AC, *et al.* 2012. Pteridófitas de Santa Catarina, um olhar sobre os dados do Inventário Florístico Florestal de Santa Catarina, Brasil. *Acta Botanica Brasílica* 26: 421-434.



Improving collection efforts to avoid loss of biodiversity: lessons from comprehensive sampling of lycophytes and ferns in the subtropical Atlantic Forest

- Gasper AL, Salino A. 2015. Samambaias e licófitas de Santa Catarina: composição, riqueza e espécies ameaçadas. *Iheringia*, ser. Botanica 70: 321-342
- Heck Jr KL, Belle G, Simberloff D. 1975. Explicit calculation of the rarefaction diversity measurement and the determination of sufficient sample size. *Ecology* 56: 1459-1461.
- Hijmans RJ, Guarino L, Bussink C, et al. 2005. DIVA-GIS. v7.5. A geographic information system for the analysis of species distribution data. <<http://www.diva-gis.org>> 15 Jan. 2015.
- Holtum RE. 1938. The ecology of tropical Pteridophytes. *Manual of Pteridology* SE - 13: 420-450.
- Hortal J, Jiménez-Valverde A, Gómez JF, Lobo JM, Baselga A. 2008. Historical bias in biodiversity inventories affects the observed environmental niche of the species. *Oikos* 117: 847-858.
- Hortal J, Lobo JM, Jiménez-Valverde A. 2007. Limitations of biodiversity databases: case study on seed-plant diversity in Tenerife, Canary Islands. *Conservation Biology* 21: 853-63.
- IBGE – Instituto Brasileiro de Geografia e Estatística. 1992. Manual técnico da vegetação brasileira. Rio de Janeiro, Ministério do Planejamento, Orçamento e Gestão.
- Jiménez-Valverde A, Hortal J. 2003. Las curvas de acumulación de especies y la necesidad de evaluar la calidad de los inventario biológicos. *Revista Iberica de Aracnologia* 8: 151-161.
- Jones MM, Szyska B, Kessler M. 2011. Microhabitat partitioning promotes plant diversity in a tropical montane forest. *Global Ecology and Biogeography* 20: 558-569.
- Kim KC, Byrne LB. 2006. Biodiversity loss and the taxonomic bottleneck: emerging biodiversity science. *Ecological Research* 21: 794-810.
- Klein RM. 1980. Ecologia da flora e vegetação do Vale do Itajaí (continuação). *Sellowia* 32: 165-389.
- Klein RM. 1984. Aspectos dinâmicos da vegetação do Sul do Brasil. *Sellowia* 36: 5-54.
- Kozak K, Wiens JJ. 2012. Phylogeny, ecology, and the origins of climate-richness relationships. *Ecology* 93: 167-181.
- Lewinsohn TM, Prado PI. 2005. Quantas espécies há no Brasil? *Megadiversidade* 1: 36-42.
- List of Species of the Brazilian Flora. 2014. <<http://floradobrasil.jbrj.gov.br>>. 01 Aug. 2012.
- Lughadha EM. 2004. Towards a working list of all known plant species. *Philosophical Transactions of the Royal Society of London. Series B, Biological sciences* 359: 681-687.
- MacDougall AS, Loo JA, Clayden SR, Goltz JG, Hinds HR. 1998. Defining conservation priorities for plant taxa in southeastern New Brunswick, Canada using herbarium records. *Biological Conservation* 86: 325-338.
- Maldonado C, Molina CI, Zizka A, et al. 2015. Estimating species diversity and distribution in the era of Big Data: to what extent can we trust public databases? *Global Ecology and Biogeography* 24: 973-984.
- Martinelli G, Moraes MA. 2013. Livro vermelho da flora do Brasil. Rio de Janeiro, Instituto de Pesquisas Jardim Botânico do Rio de Janeiro.
- Martinelli G. 2007. Mountain biodiversity in Brazil. *Revista Brasileira de Botânica* 30: 587-597.
- May RMC. 2011. Why should we be concerned about loss of biodiversity. *Comptes Rendus Biologies* 334: 346-350.
- Murphy GEP, Romanuk TN. 2014. A meta-analysis of declines in local species richness from human disturbances. *Ecology and Evolution* 4: 91-103.
- Mutke J, Barthlott W. 2005. Patterns of vascular plant diversity at continental to global scales. *Biologische Skrifter* 55: 521-531.
- Nelson BW, Ferreira CAC, Silva MF, Kawasaki ML. 1990. Endemism centres, refugia and botanical collection density in Brazilian Amazonia. *Nature* 345: 714-716.
- Nimer E. 1989. *Climatologia do Brasil*. 2nd. edn. Rio de Janeiro, IBGE.
- Oliveira-Filho AT. 2009. Classificação das fitofisionomias da América do Sul cisandina tropical e subtropical: proposta de um novo sistema - prático e flexível - ou uma injeção a mais de caos. *Rodriguésia* 60: 237-258.
- Pandit MK, Sodhi NS, Koh LP, Bhaskar A, Brook BW. 2007. Unreported yet massive deforestation driving loss of endemic biodiversity in Indian Himalaya. *Conservation* 16: 153-163.
- Parris BS. 1985. Ecological aspects off distribution and speciation in Old-World tropical ferns. *Proceedings of the Royal Society of London. Series B, Biological Sciences* 86: 341-346.
- Pyke GH, Ehrlich PR. 2010. Biological collections and ecological/environmental research: a review, some observations and a look to the future. *Biological Reviews* 85: 247-266.
- Reitz R. 1965. Plano de coleção. *Flora Ilustrada Catarinense*. Itajaí, Herbário Barbosa Rodrigues.
- Rezende VL, Eisenlohr PV, Gasper AL, Vibrans AC, Oliveira-Filho AT. 2014. Toward a better understanding of the subtropical Atlantic Forest in the state of Santa Catarina, Brazil: tree sampling accuracy, species richness and frequency of rare species. *Acta Botanica Brasílica* 28: 382-391.
- Rezende VL, Oliveira-Filho AT, Eisenlohr PV, Kamino LHY, Vibrans AC. 2015. Restricted geographic distribution of tree species calls for urgent conservation efforts in the Subtropical Atlantic Forest. *Biodiversity and Conservation* 24: 1057-1071.
- Ribeiro MC, Martensen AC, Metzger JP, Tabarelli M, Scarano F, Fortin MJ. 2011. The Brazilian Atlantic Forest: a shrinking biodiversity hotspot. In: Zachos FE, Habel JC. (eds.) *Biodiversity Hotspots*. Berlin, Springer Berlin Heidelberg. p. 405-434.
- Rodríguez-Loínez G, Amezaga I, Onaindia M. 2011. Does forest fragmentation affect the same way all growth-forms? *Journal of Environmental Management* 94: 125-131.
- Salino A, Almeida TE. 2009. Pteridófitas. In: Stehmann JR, Forzza RC, Salino A, Sobral M, Costa DP, Kamino LHY. (eds.) *Plantas da Floresta Atlântica*. Rio de Janeiro, Instituto de Pesquisas Jardim Botânico do Rio de Janeiro. p. 19-25.
- Sánchez-Fernández D, Lobo JM, Abellán P, Ribera I, Millán A. 2008. Bias in freshwater biodiversity sampling: the case of Iberian water beetles. *Diversity and Distributions* 14: 754-762.
- Sastre P, Lobo J. 2009. Taxonomist survey biases and the unveiling of biodiversity patterns. *Biological Conservation* 142: 462-467.
- Silva IAA, Pereira AFN, Barros ICL. 2014. Fragmentation and loss of habitat: consequences for the fern communities in Atlantic forest remnants in Alagoas, north-eastern Brazil. *Plant Ecology & Diversity* 7: 509-517.
- Sloan S, Jenkins CN, Joppa LN, Gaveau DLA, Laurance WF. 2014. Remaining natural vegetation in the global biodiversity hotspots. *Biological Conservation* 177: 12-24.
- Soberón J, Lorente J. 1993. The use of species accumulation functions for the prediction of species richness. *Conservation Biology* 7: 480-488.
- Sousa-Baena MS, Garcia LC, Peterson AT. 2014. Completeness of digital accessible knowledge of the plants of Brazil and priorities for survey and inventory. *Diversity and Distributions* 20: 369-381.
- Tedesco PA, Bigorne R, Bogan AE, Giam X, Jézéquel C, Hugueny B. 2014. Estimating how many undescribed species have gone extinct. *Conservation Biology* 28: 1360-1370.
- Thiers B. 2015. Index Herbariorum: a global directory of public herbaria and associated staff. New York Botanical Garden's Virtual Herbarium. <<http://sweetgum.nybg.org/science/ih/>>. 04 Nov. 2015.
- Urban MC. 2015. Accelerating extinction risk from climate change. *Science* 348: 571-573.
- Vibrans AC, McRoberts RE, Moser P, Nicoletti AL. 2013. Using satellite image-based maps and ground inventory data to estimate the area of the remaining Atlantic forest in the Brazilian state of Santa Catarina. *Remote Sensing of Environment* 130: 87-95.
- Vibrans AC, Sevegnani L, Lingner DV, Gasper AL, Sabbagh S. 2010. Inventário florístico florestal de Santa Catarina (IFFSC): aspectos metodológicos e operacionais. *Pesquisa Florestal Brasileira* 30: 291-302.
- Walther BA, Moore JL. 2005. The concepts of bias, precision and accuracy, and their use in testing the performance of species richness estimators, with a literature review of estimator performance. *Ecography* 28: 815-829.
- Werneck MS, Sobral M, Rocha CTV, Landau EC. 2011. Distribution and Endemism of Angiosperms in the Atlantic Forest. *Natureza & Conservação* 9: 188-193.
- Zuloaga FO, Morrone O, Belgrano MJ. 2008. *Catálogo de plantas vasculares del Cono Sur- Volumen 1- Pteridophyta, Gymnospermae, Monocotyledoneae*. New York, Missouri Botanical Garden.

