





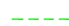





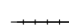



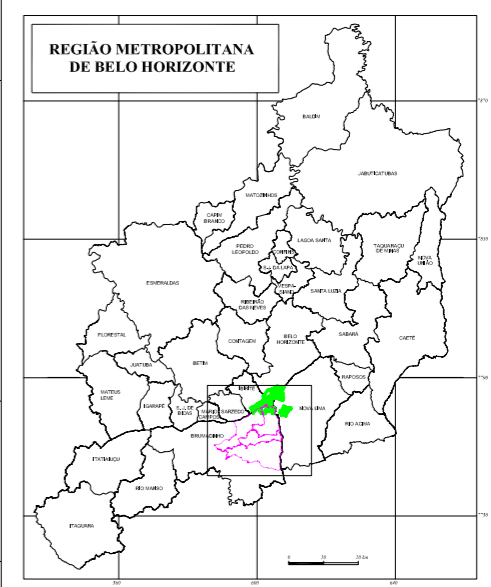
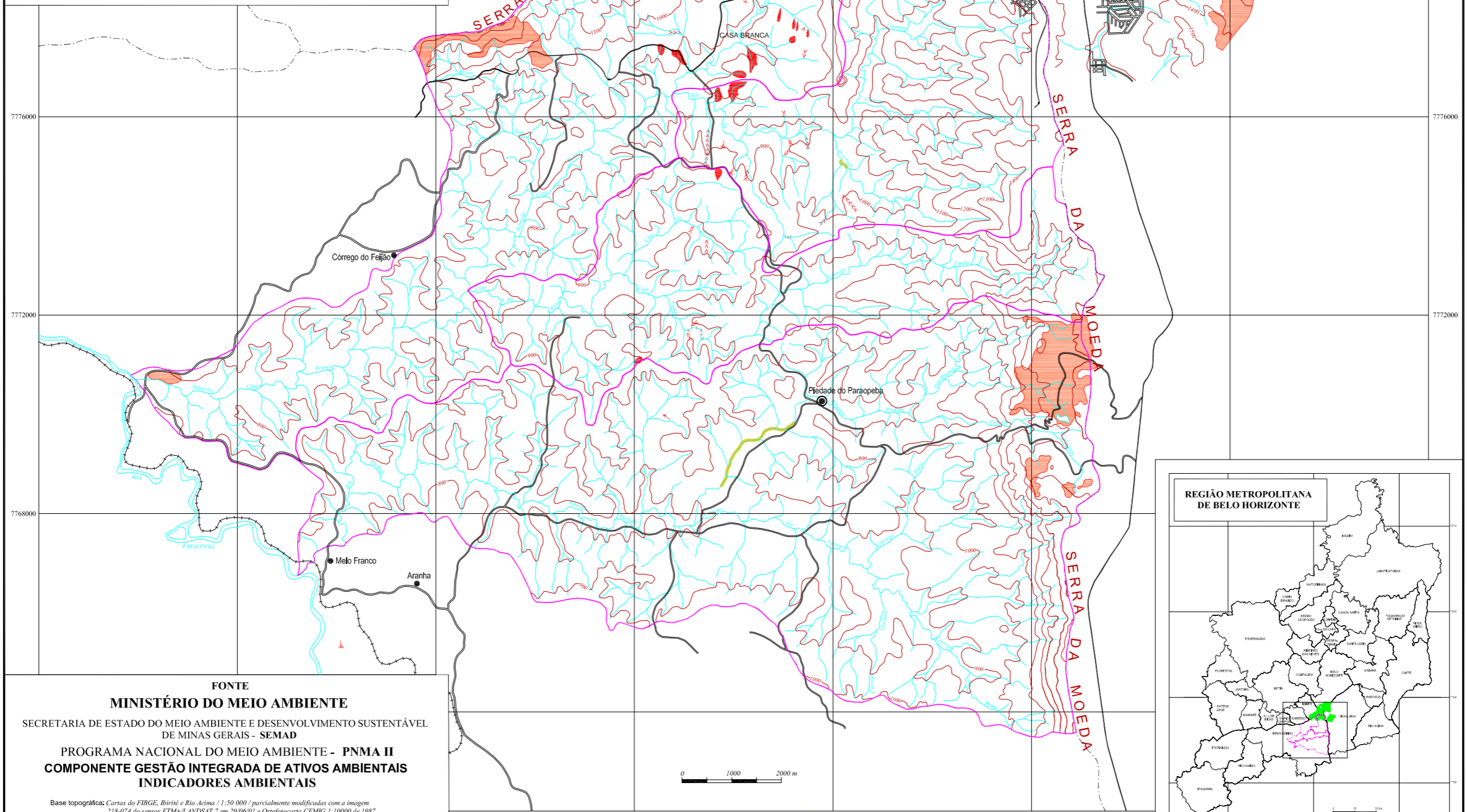
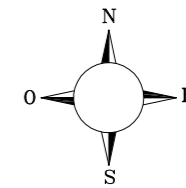


**BACIAS DOS RIBEIRÕES PIEDADE, CASA BRANCA, CATARINA e CÓRREGO FUNDO**

**Fig.3.6 - FOCOS EROSIVOS E MINERAÇÃO**

-  Voçoroca
  -  Laminar
  -  Sulco
  -  Solapamento no canal
  -  Garimpo antigo
  -  Mineração
- Convenções Adicionais
-  Limite das Unidades de Conservação
  -  Limite de bacias hidrográficas
- Convenções Cartográficas
-  Sede de distrito
  -  Vila
  -  Drenagem
  -  Curva de nível
  -  Estrada pavimentada
  -  Estrada sem pavimentação
  -  Estrada de ferro
  -  Limite intermunicipal

Parte integrante da dissertação de mestrado de Vania Figueiredo  
Não deve ser emprestada separadamente



**FONTE**

**MINISTÉRIO DO MEIO AMBIENTE**

SECRETARIA DE ESTADO DO MEIO AMBIENTE E DESENVOLVIMENTO SUSTENTÁVEL  
DE MINAS GERAIS - SEMAD

PROGRAMA NACIONAL DO MEIO AMBIENTE - PNMA II  
COMPONENTE GESTÃO INTEGRADA DE ATIVOS AMBIENTAIS  
INDICADORES AMBIENTAIS

Base topográfica: Cartas do FIBGE, Ibirité e Rio Acima / 1:50 000 / parcialmente modificadas com a imagem  
218-074 do sensor ETM+/LANDSAT 7 em 29/06/01 e Ortofotocarta CEMIG 1:10000 de 1987.

Base temática: Diagnóstico Ambiental do Vale do Paraopeba. IGA, 1996; e Imagem 218-074 do Sensor  
ETM+/LANDSAT 7 em 29/06/01