

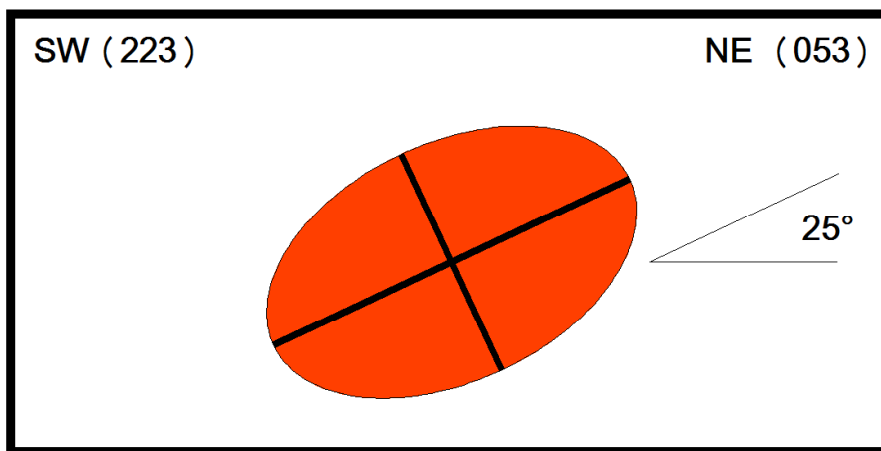
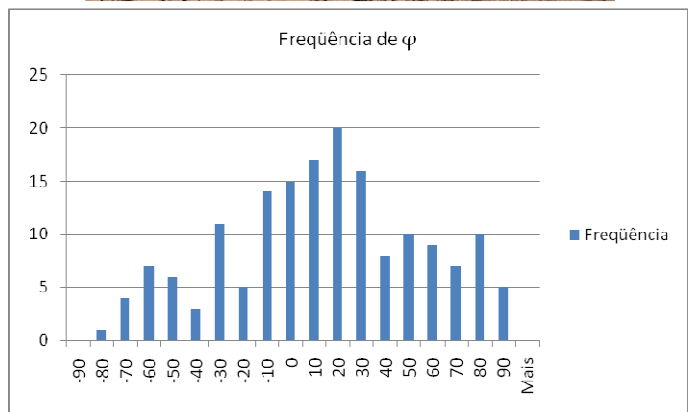
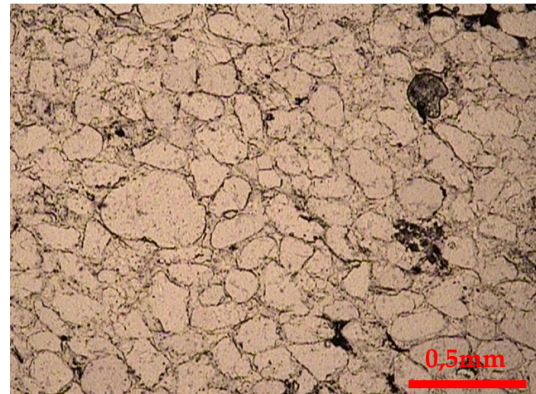
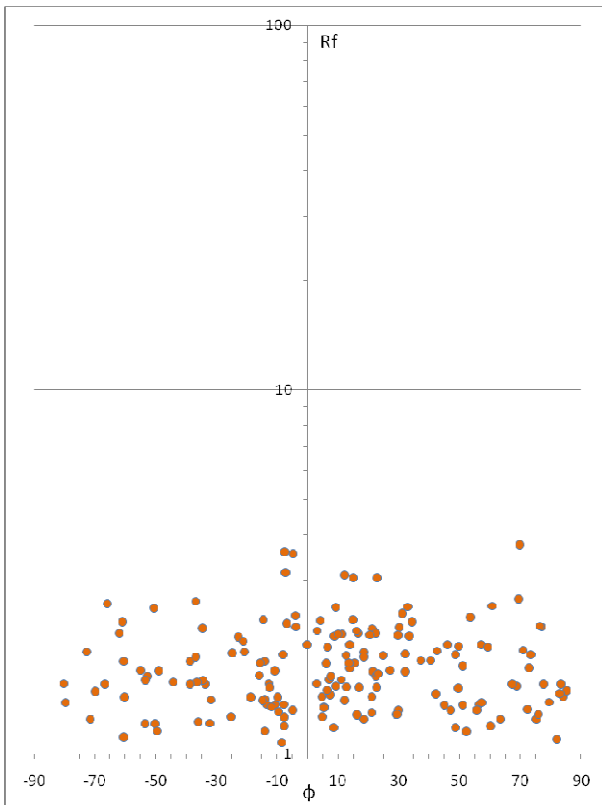
**10.4 – ANEXO 04: PARÂMETROS DA DEFORMAÇÃO DOS CLASTOS DO  
NÍVEL A – FORMAÇÃO SÃO JOÃO DA CHAPADA**

- VALORES DE  $Rf/\Phi$
- GRÁFICOS  $Rf/\Phi$
- HISTOGRAMAS DE FREQUÊNCIA DE  $\Phi$
- ELIPSES DE DEFORMAÇÃO

**AMOSTRA LLS 52**  
**Lâmina LLS 52-A**

Ortoquartzito. Granulometria areia média. Grãos arredondados a bem arredondados.

- Média harmônica de Rf: 1,65;  $\phi$  principal: 25°

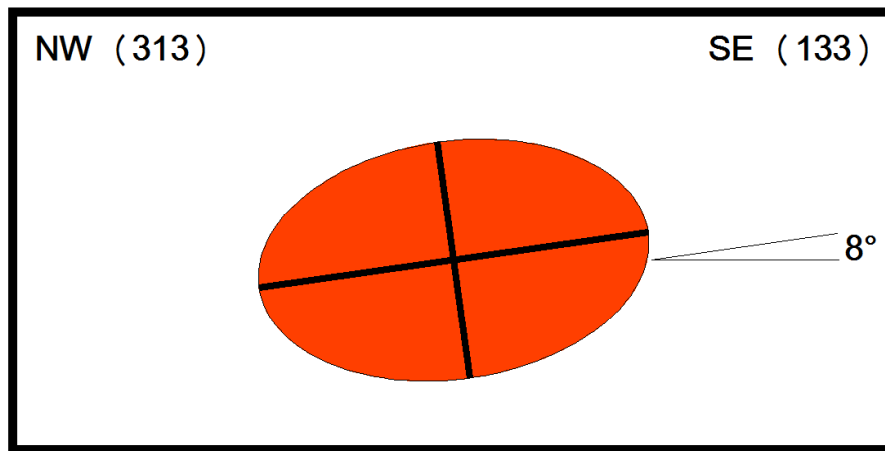
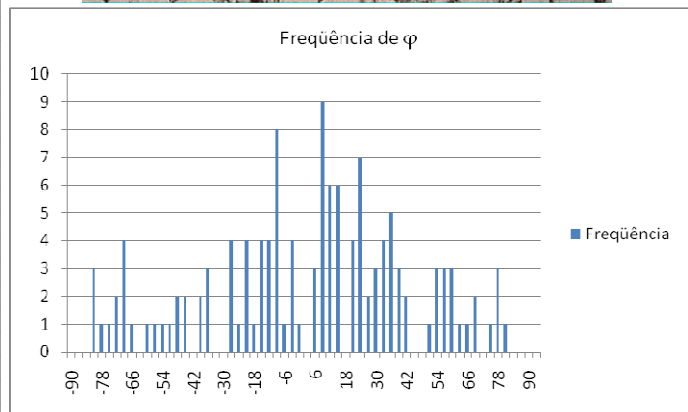
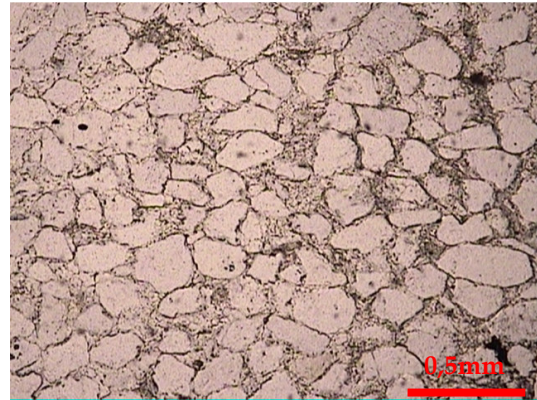
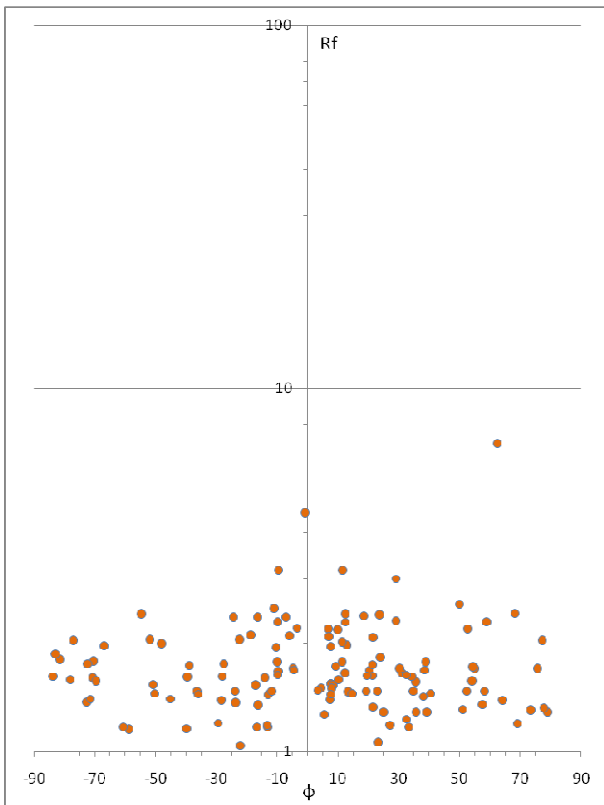


Análise da deformação – Amostra LLS 52 – Lâmina LLS 52-A

AMOSTRA LLS 52  
Lâmina LLS 52-B

Ortoquartzito. Granulometria areia média. Grãos arredondados a bem arredondados.

- Média harmônica de Rf: 1,63;  $\phi$  principal: 08°

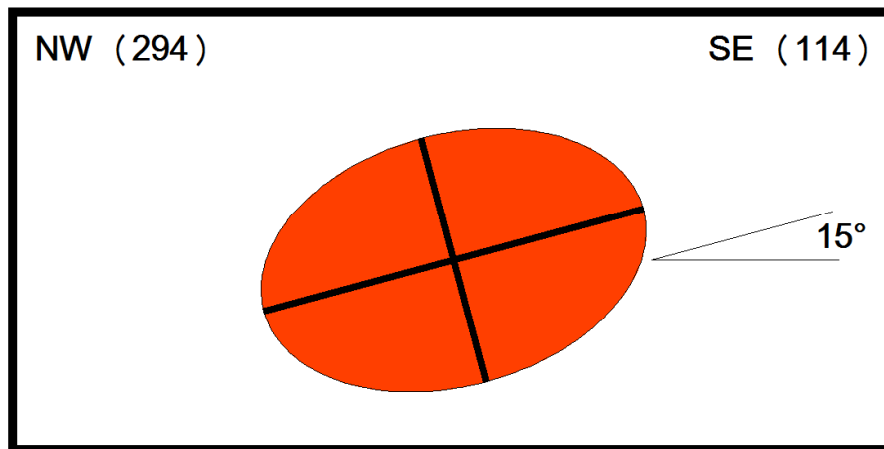
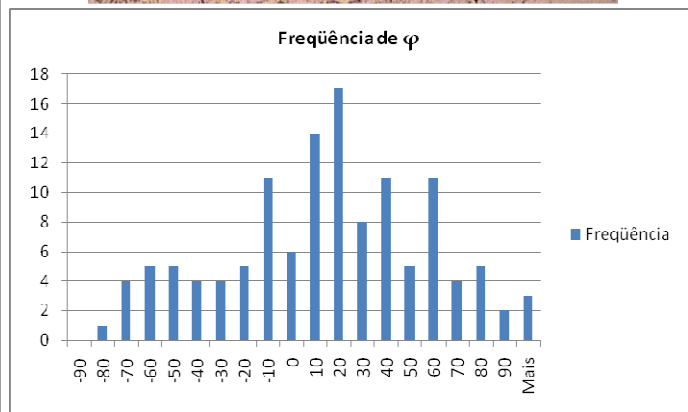
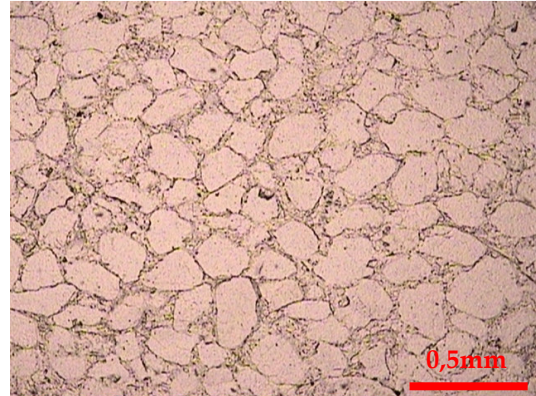
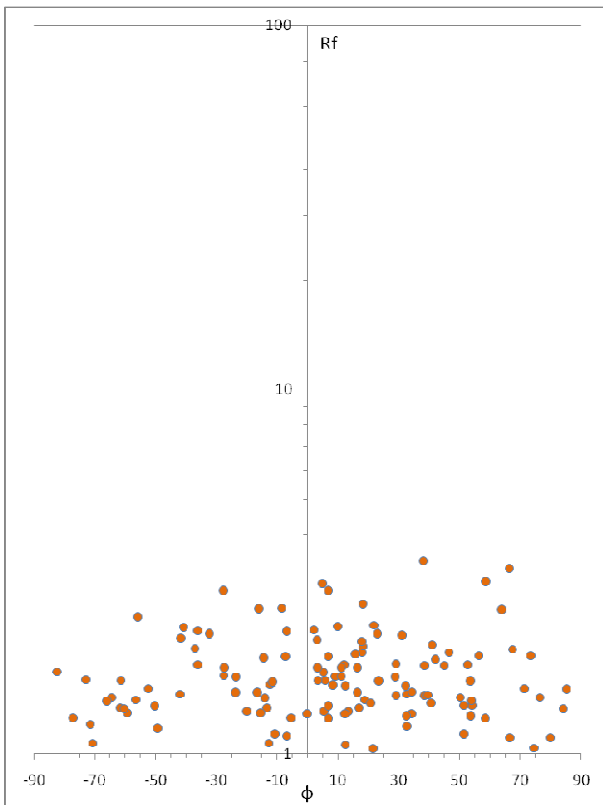


Análise da deformação – Amostra LLS 52 – Lâmina LLS 52-B

AMOSTRA LLS 52  
Lâmina LLS 52-C

Ortoquartzito. Granulometria areia média. Grãos arredondados a bem arredondados.

- Média harmônica de Rf: 1,56;  $\varphi$  principal: 15°

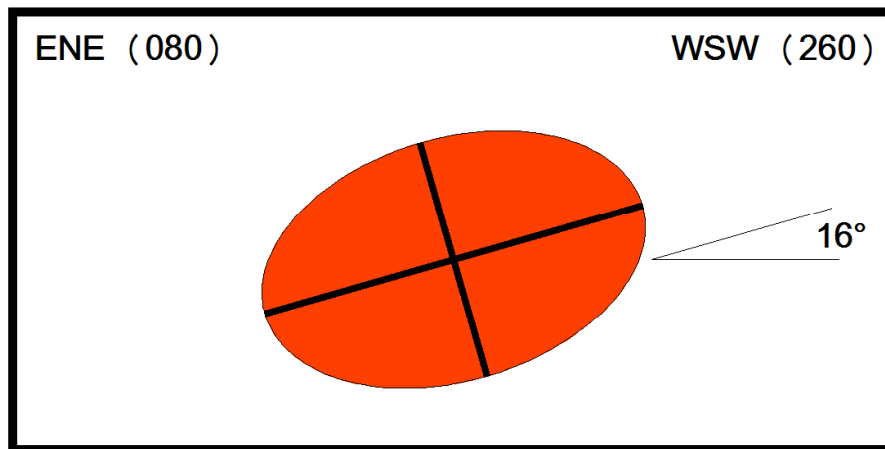
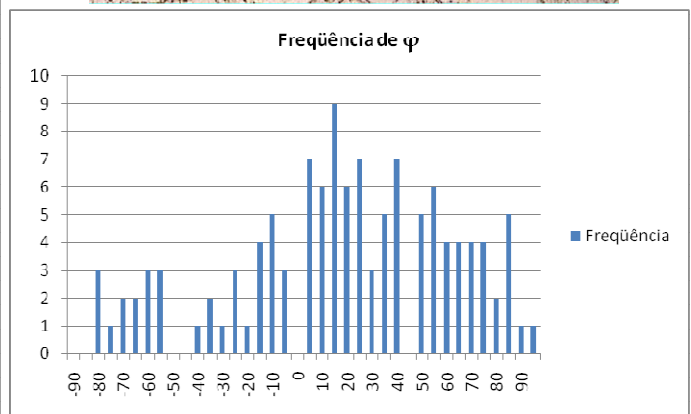
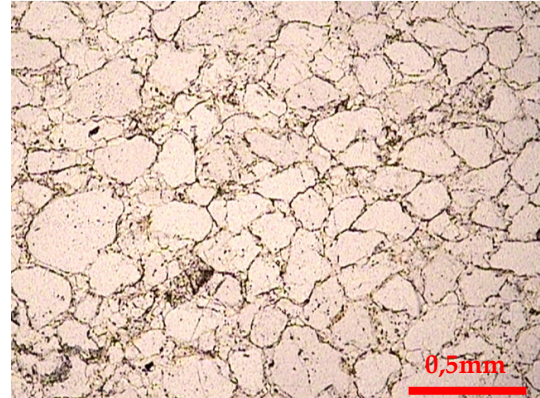
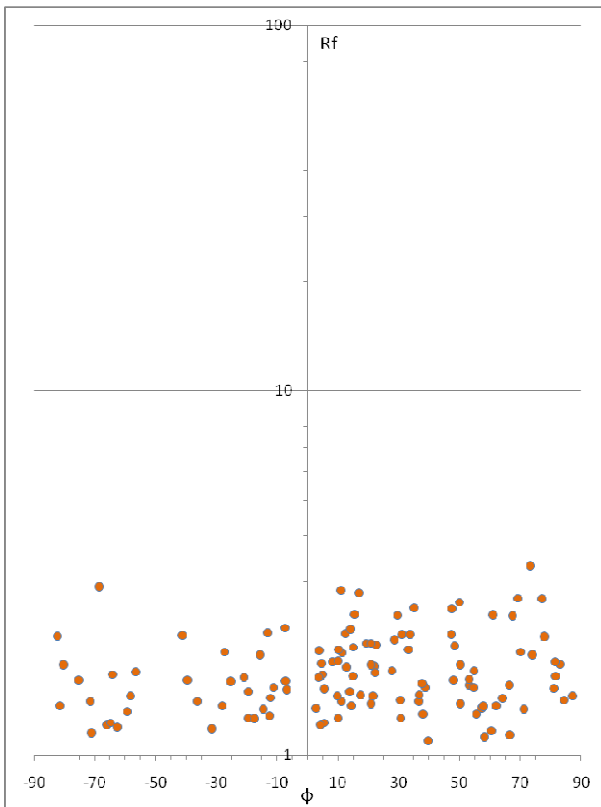


Análise da deformação – Amostra LLS 52 – Lâmina LLS 52-C

AMOSTRA LLS 52  
Lâmina LLS 52-D

Ortoquartzito. Granulometria areia média. Grãos arredondados a bem arredondados.

- Média harmônica de Rf: 1,62;  $\varphi$  principal: 16°

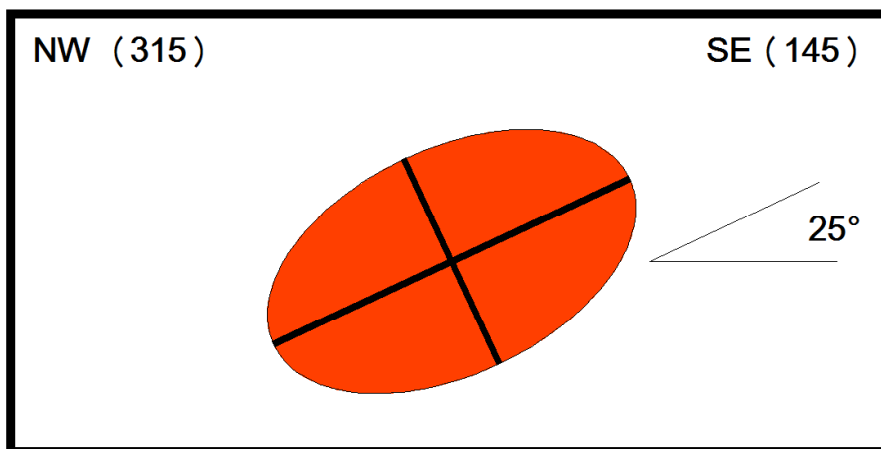
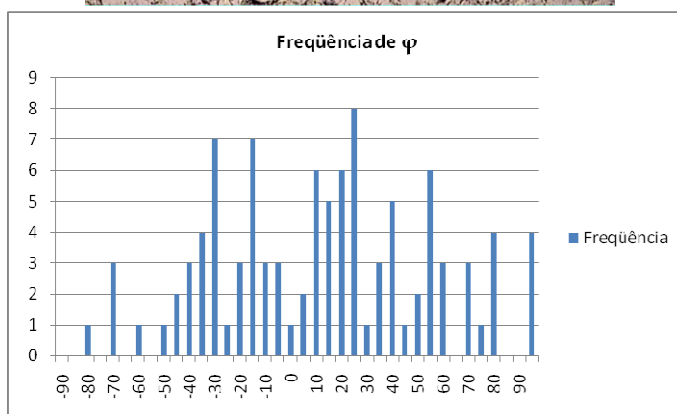
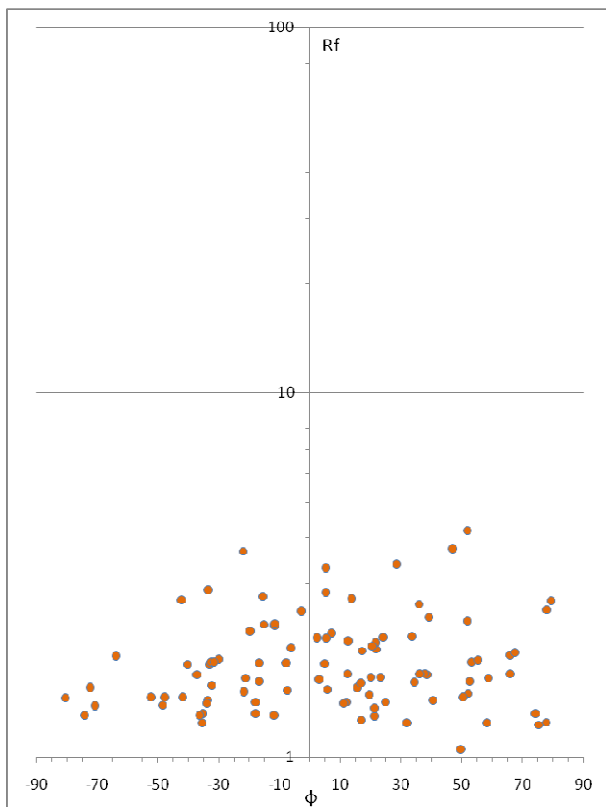


Análise da deformação – Amostra LLS 52 – Lâmina LLS 52-D

AMOSTRA LLS 53  
Lâmina LLS 53-A

Quartzito micáceo. Granulometria areia média. Grãos subarredondados.

- Média harmônica de Rf: 1,74;  $\phi$  principal: 25°

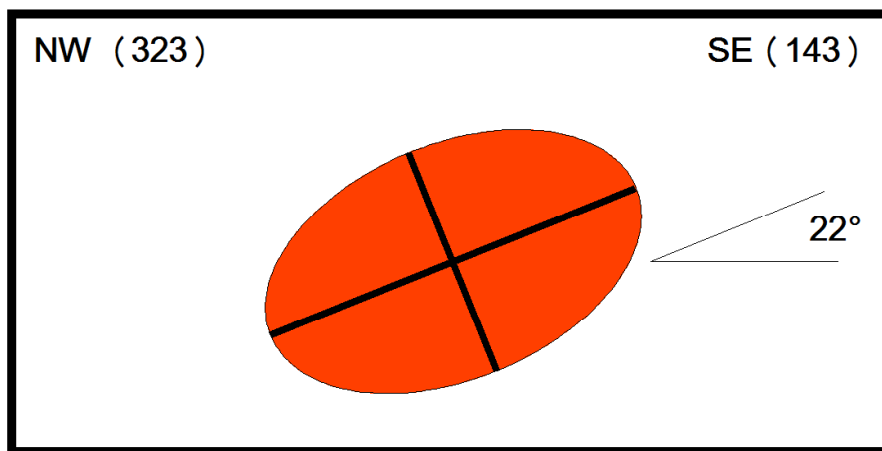
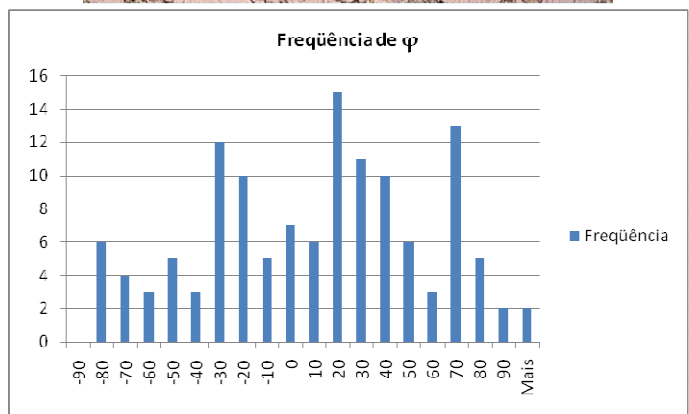
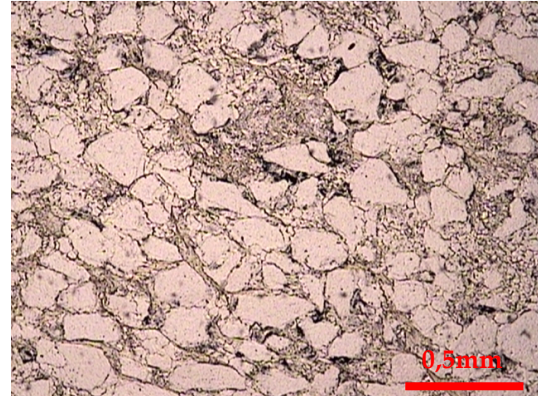
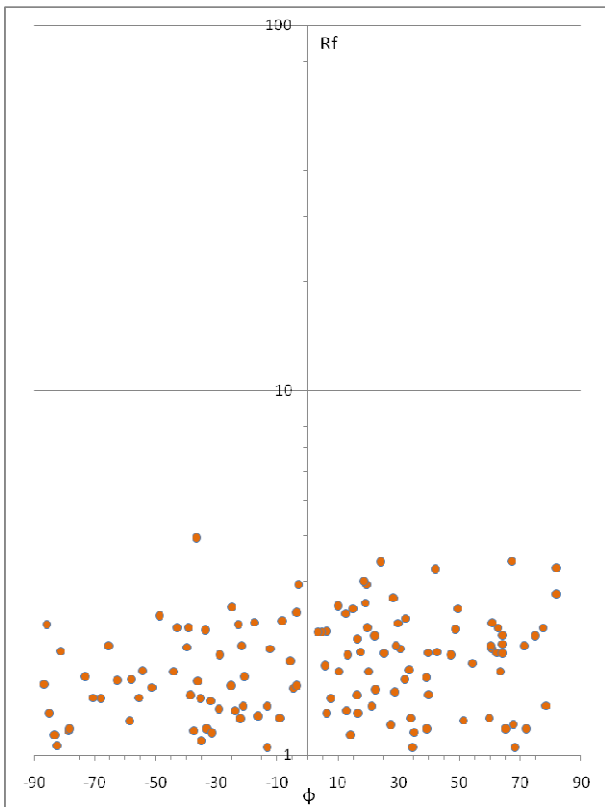


Análise da deformação – Amostra LLS 53 – Lâmina LLS 53-A

AMOSTRA LLS 53  
Lâmina LLS 53-B

Quartzito micáceo. Granulometria areia média. Grãos subarredondados.

- Média harmônica de Rf: 1,67;  $\phi$  principal: 22°



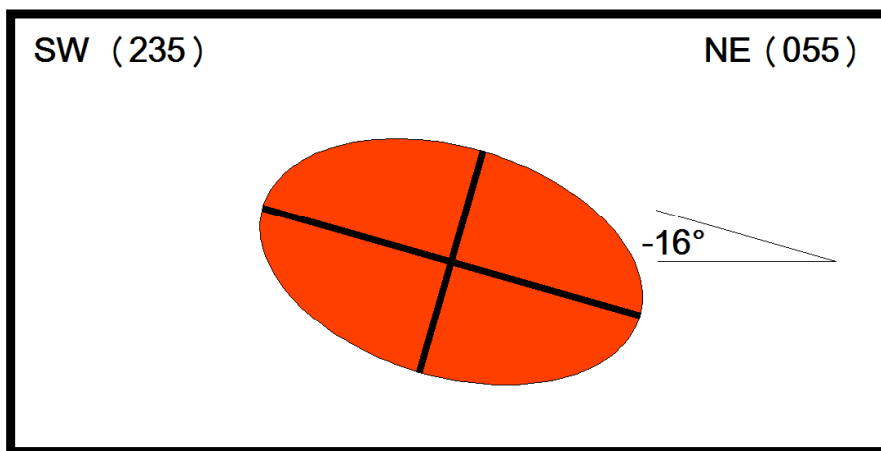
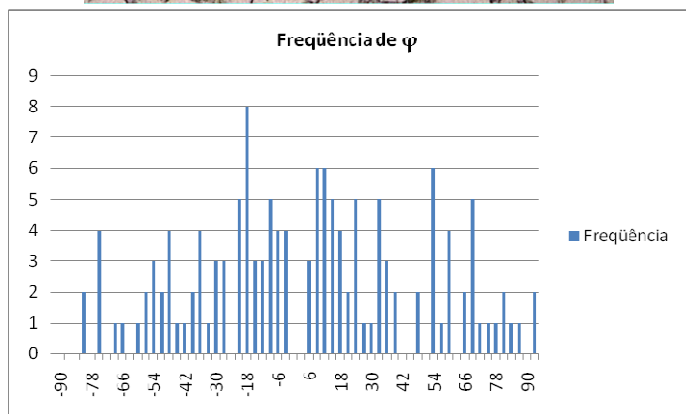
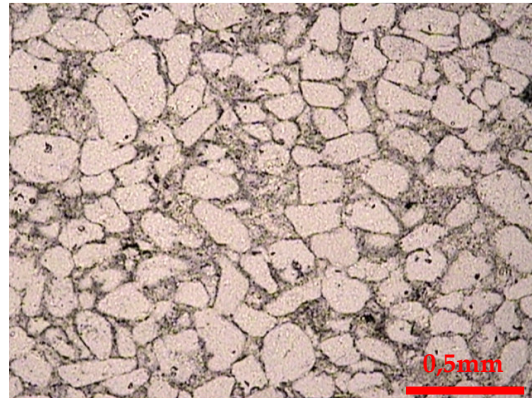
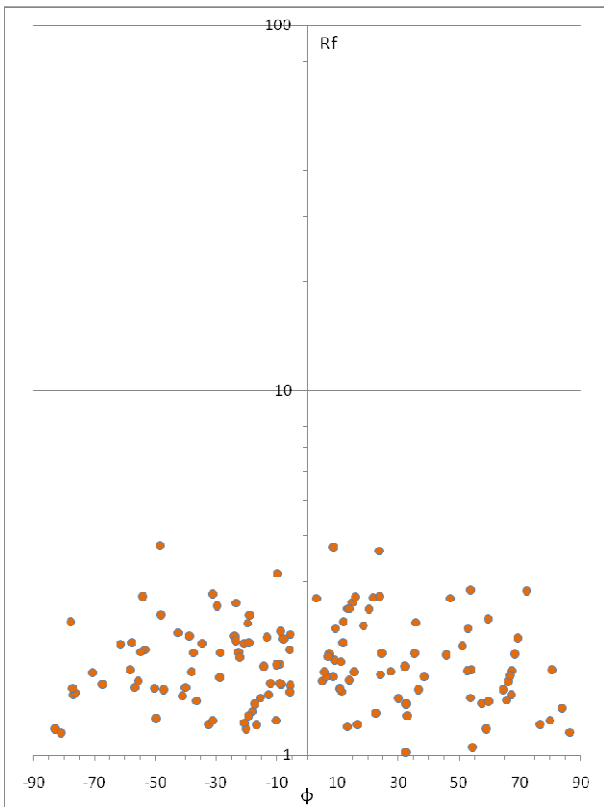
Análise da deformação – Amostra LLS 53 – Lâmina LLS 53-B



AMOSTRA LLS 53  
Lâmina LLS 53-C

Quartzito micáceo. Granulometria areia média. Grãos arredondados a sub-arredondados.

- Média harmônica de Rf: 1,71;  $\phi$  principal:  $-16^\circ$



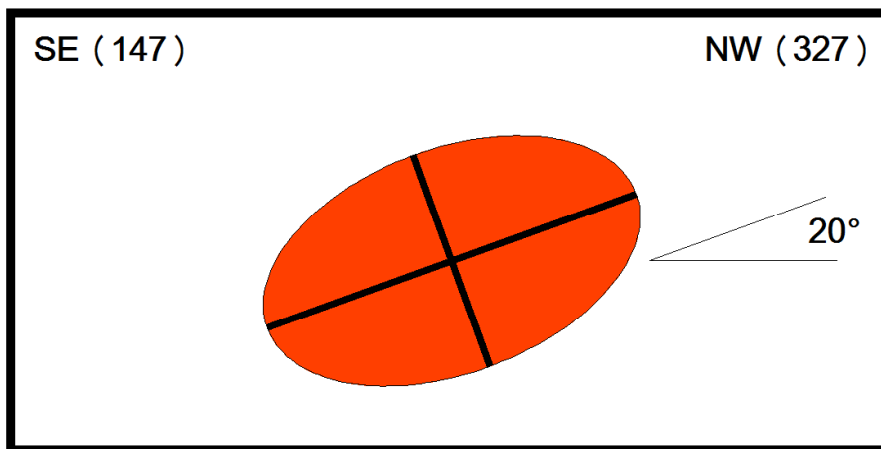
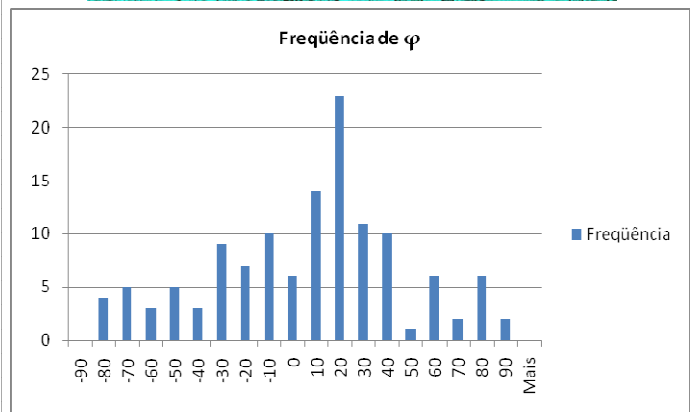
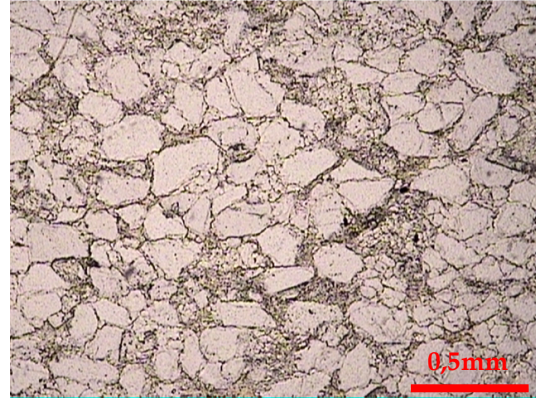
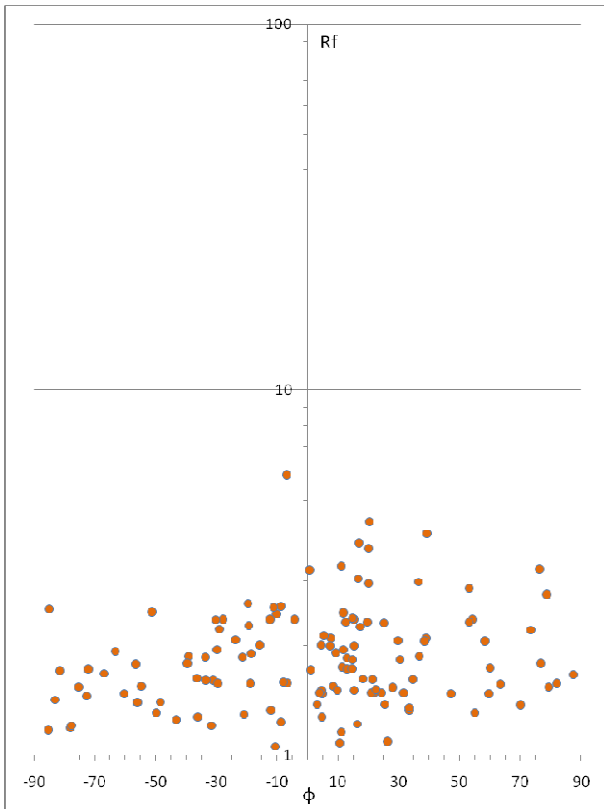
Análise da deformação – Amostra LLS 53 – Lâmina LLS 53-C



AMOSTRA LLS 53  
Lâmina LLS 53-D

Quartzito micáceo. Granulometria areia média. Grãos subarredondados.

- Média harmônica de Rf: 1,75;  $\varphi$  principal: 20°

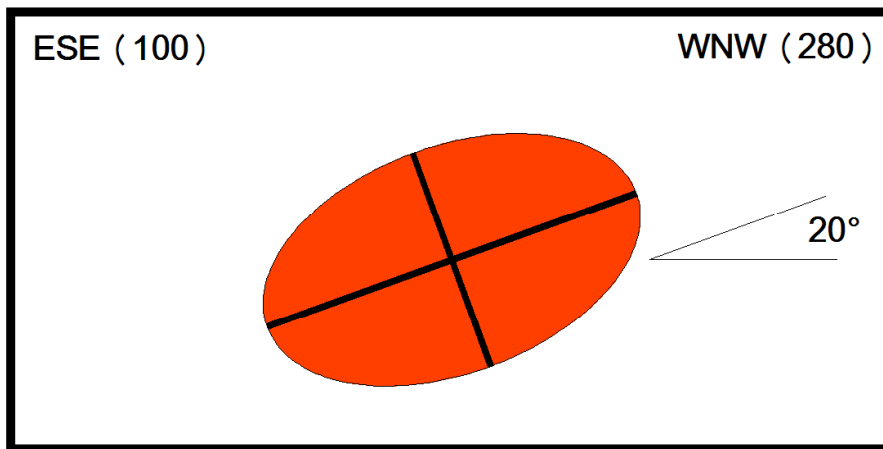
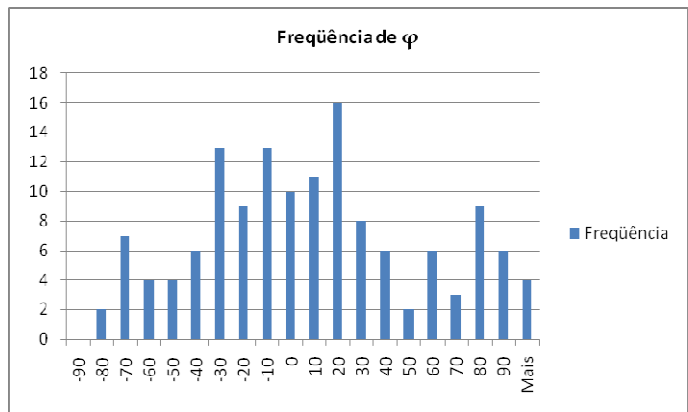
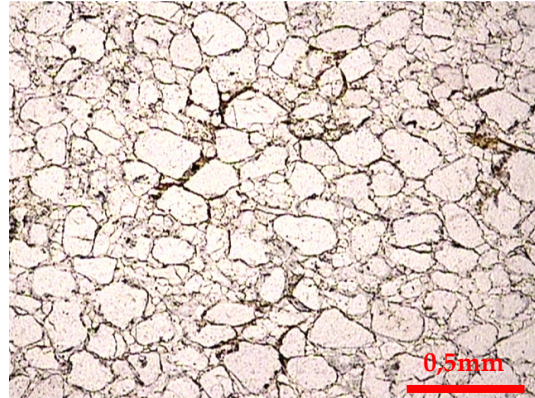
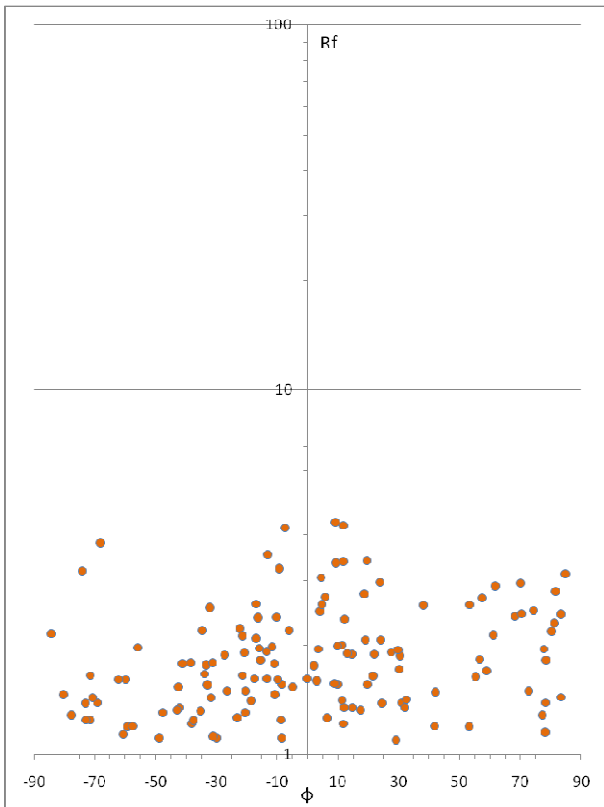


Análise da deformação – Amostra LLS 53 – Lâmina LLS 53-D

**AMOSTRA LLS 54**  
**Lâmina LLS 54-A**

Ortoquartzito. Granulometria areia média. Grãos arredondados.

- Média harmônica de Rf: 1,73;  $\phi$  principal: 20°

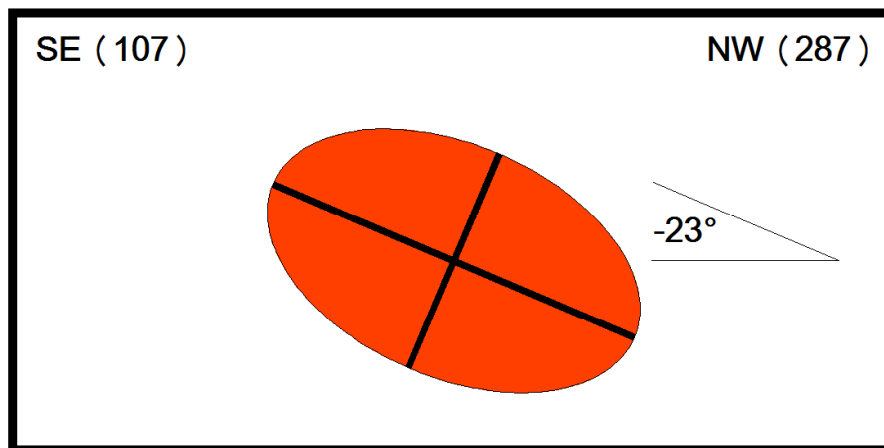
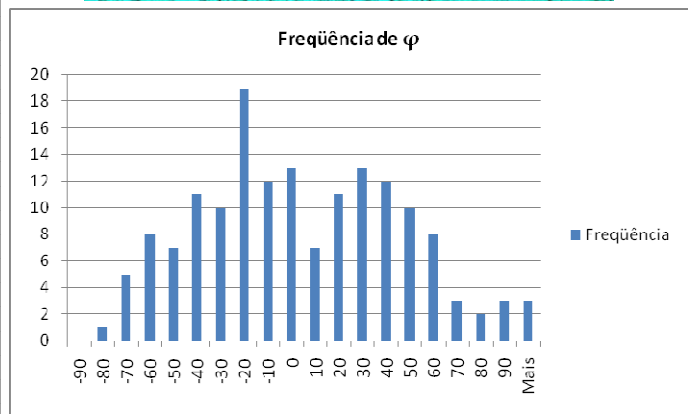
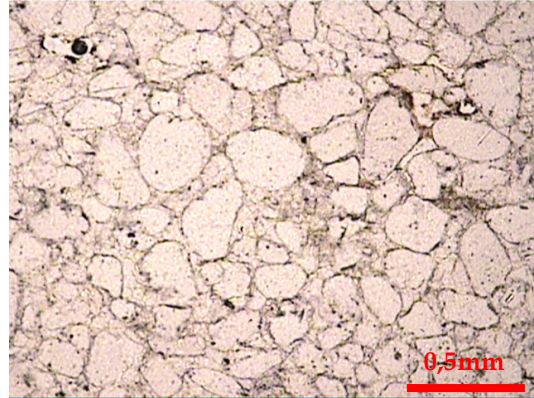
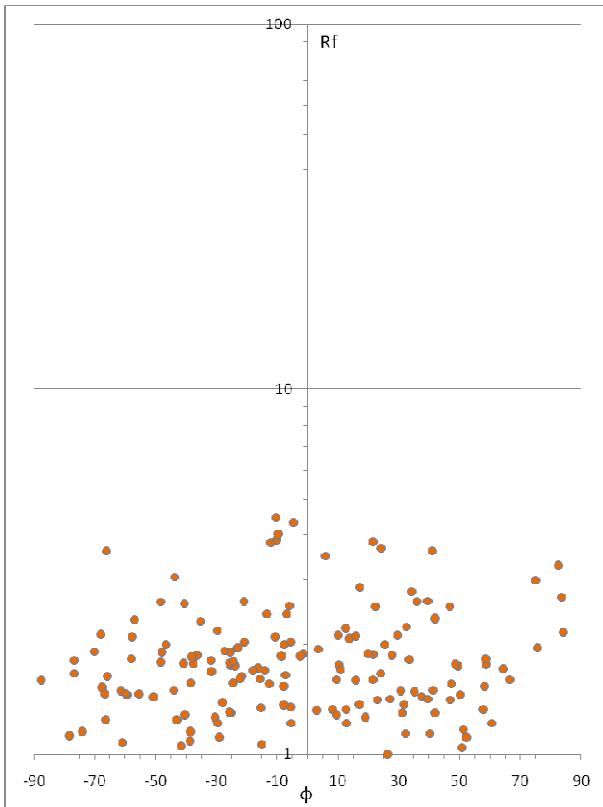


Análise da deformação – Amostra LLS 54 – Lâmina LLS 54-A

AMOSTRA LLS 54  
Lâmina LLS 54-B

Ortoquartzito. Granulometria areia média. Grãos arredondados a bem arredondados.

- Média harmônica de Rf: 1,69;  $\phi$  principal:  $-23^\circ$

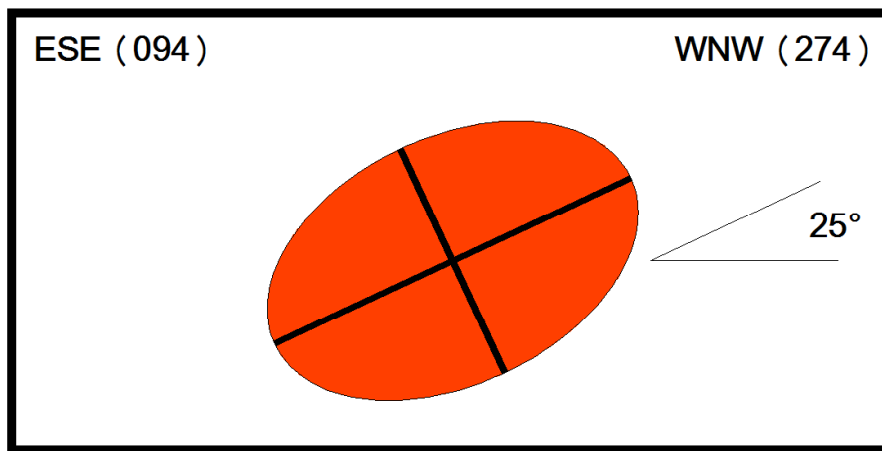
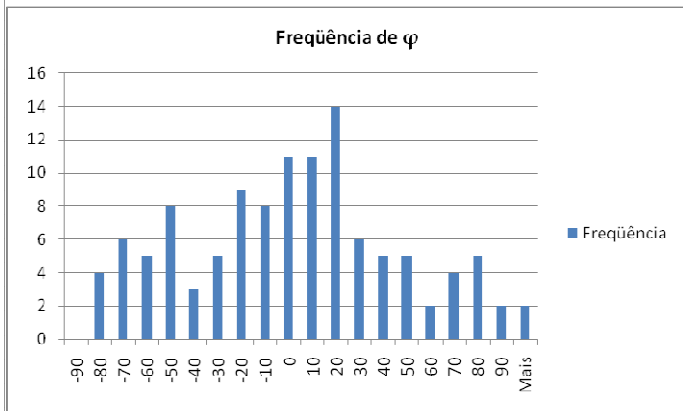
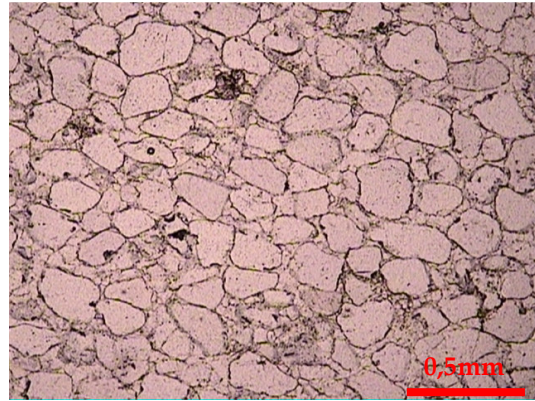
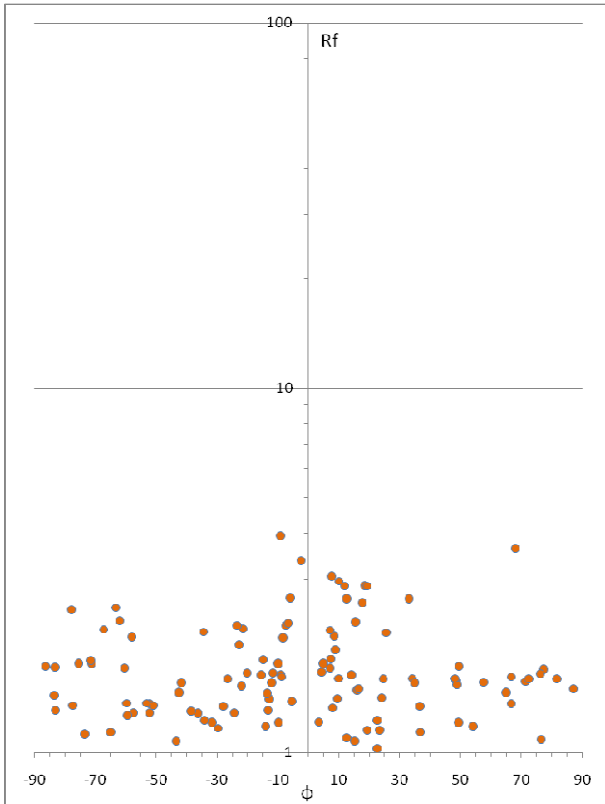


Análise da deformação – Amostra LLS 54 – Lâmina LLS 54-B

**AMOSTRA LLS 54**  
**Lâmina LLS 54-C**

Ortoquartzito. Granulometria areia média. Grãos arredondados a bem arredondados.

- Média harmônica de Rf: 1,59;  $\phi$  principal: 25°



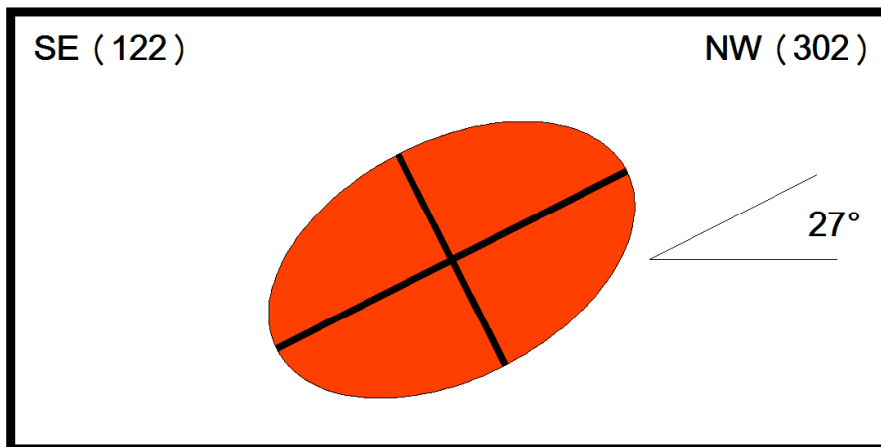
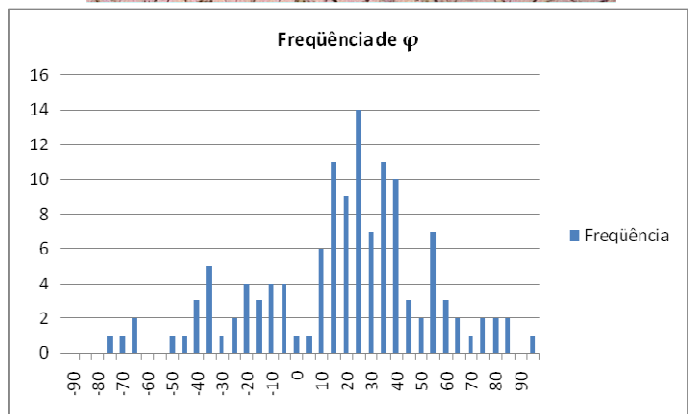
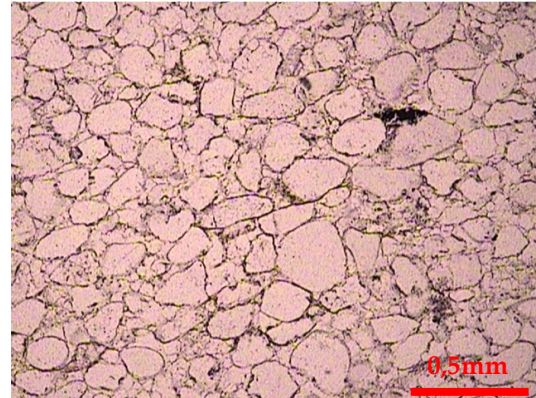
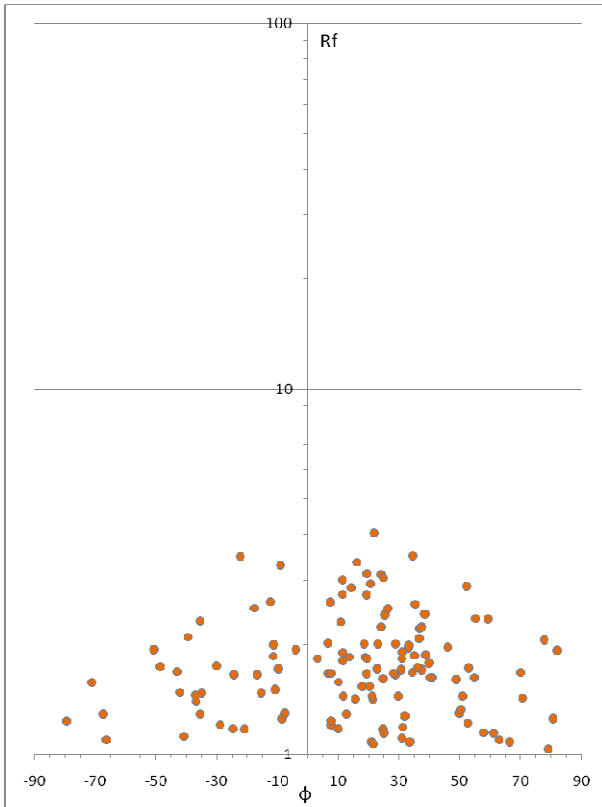
b

Análise da deformação – Amostra LLS 54 – Lâmina LLS 54-C

**AMOSTRA LLS 54**  
**Lâmina LLS 54-D**

Ortoquartzito. Granulometria areia média. Grãos arredondados a bem arredondados.

- Média harmônica de Rf: 1,66;  $\phi$  principal: 27°

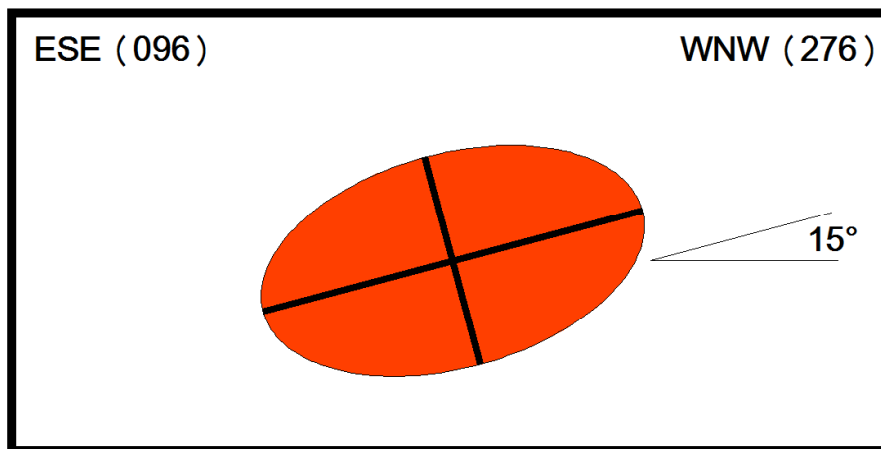
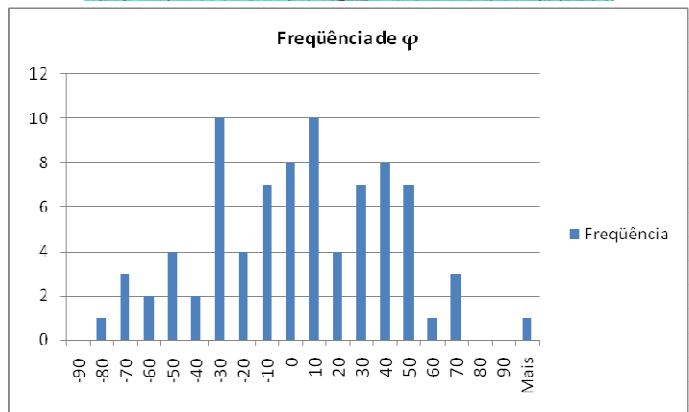
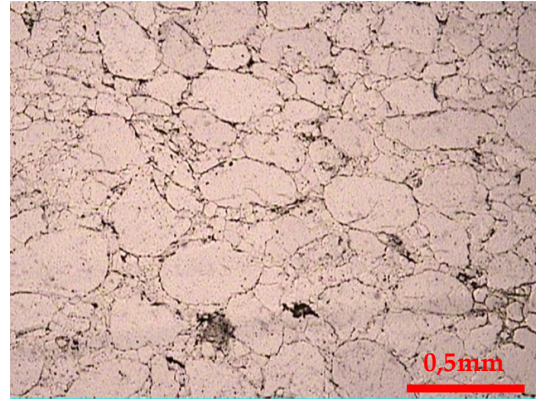
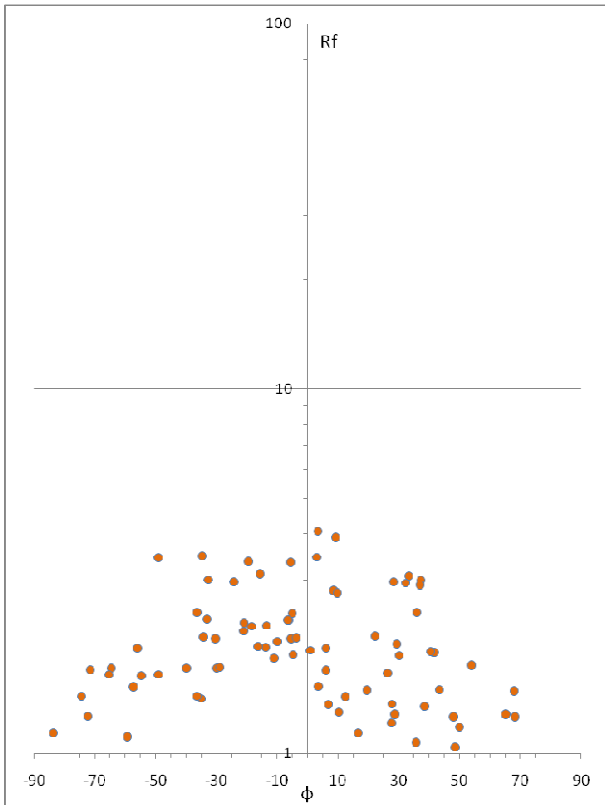


*Análise da deformação – Amostra LLS 54 – Lâmina LLS 54-D*

AMOSTRA LLS 55  
Lâmina LLS 55-A

Quartzito localmente micáceo. Granulometria areia média. Grãos arredondados a bem arredondados.

- Média harmônica de Rf: 1,83;  $\phi$  principal: 15°



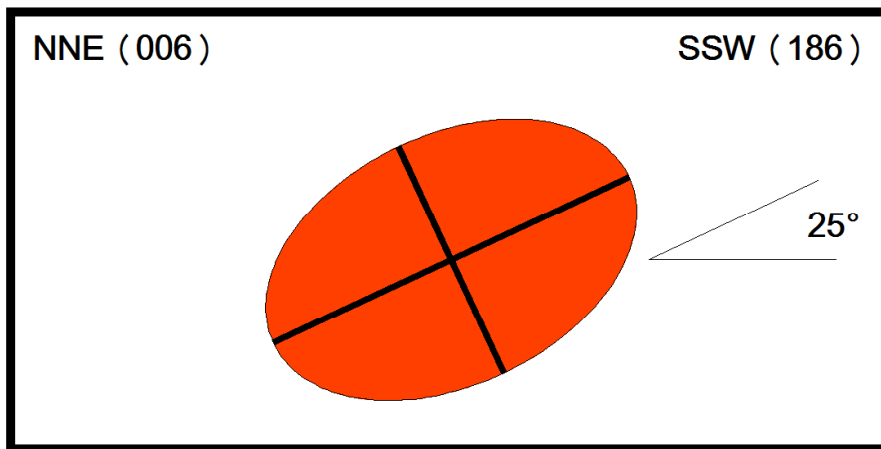
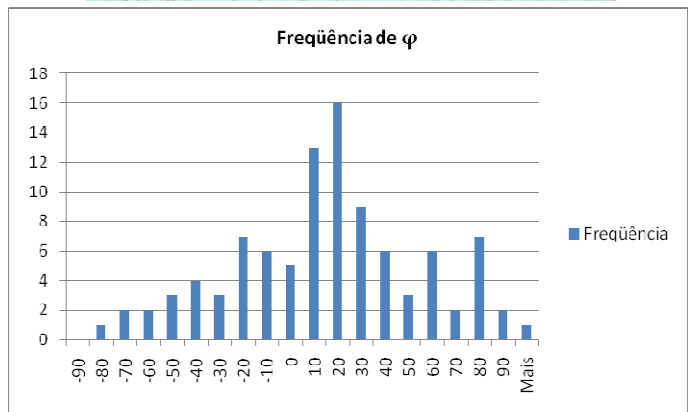
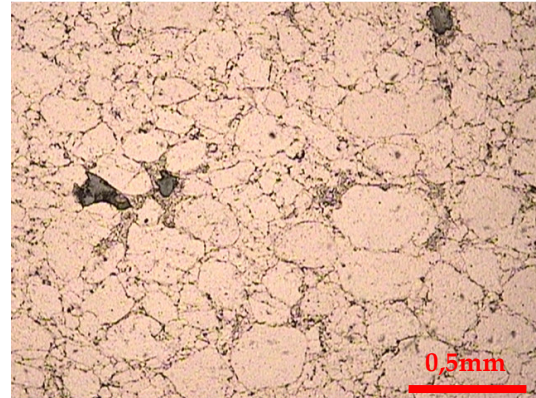
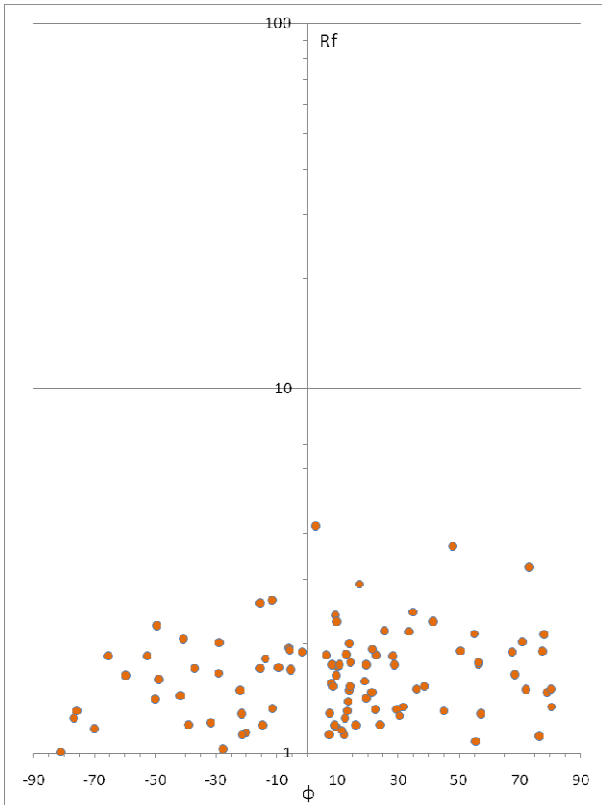
Análise da deformação – Amostra LLS 55 – Lâmina LLS 55-A



**AMOSTRA LLS 55**  
**Lâmina LLS 55-B**

Ortoquartzito. Granulometria areia média. Grãos arredondados.

- Média harmônica de Rf: 1,57;  $\phi$  principal: 25°



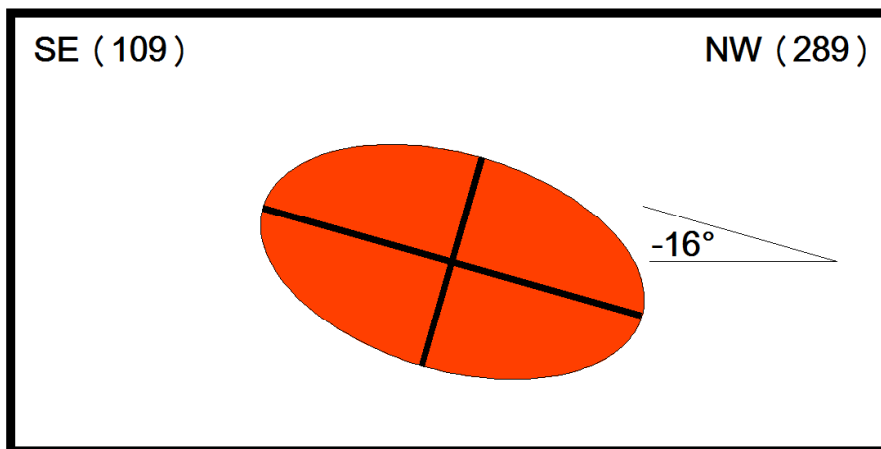
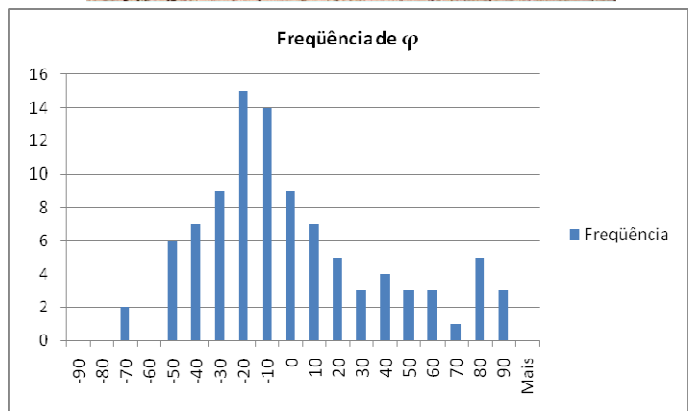
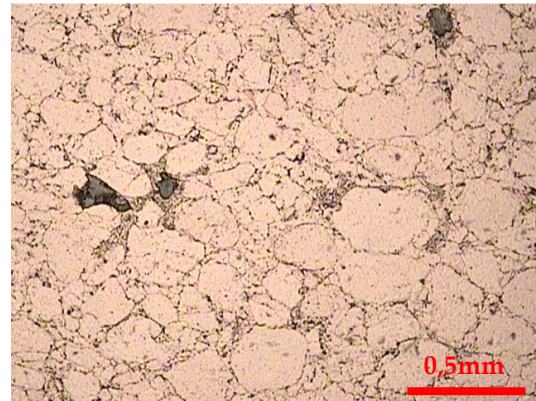
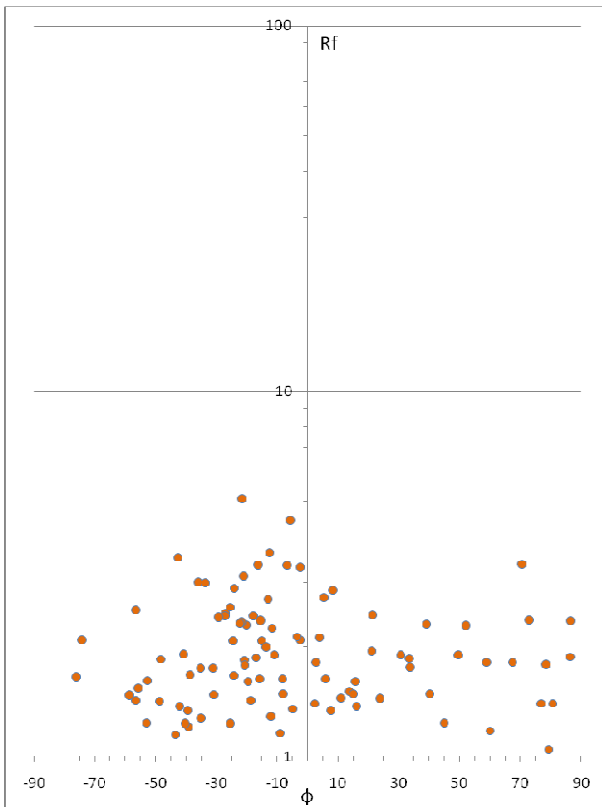
Análise da deformação – Amostra LLS 55 – Lâmina LLS 55-B



AMOSTRA LLS 56  
Lâmina LLS 56-A

Quartzito micáceo. Granulometria areia média. Grãos subarredondados a arredondados.

- Média harmônica de Rf: 1,81;  $\varphi$  principal:  $-16^\circ$

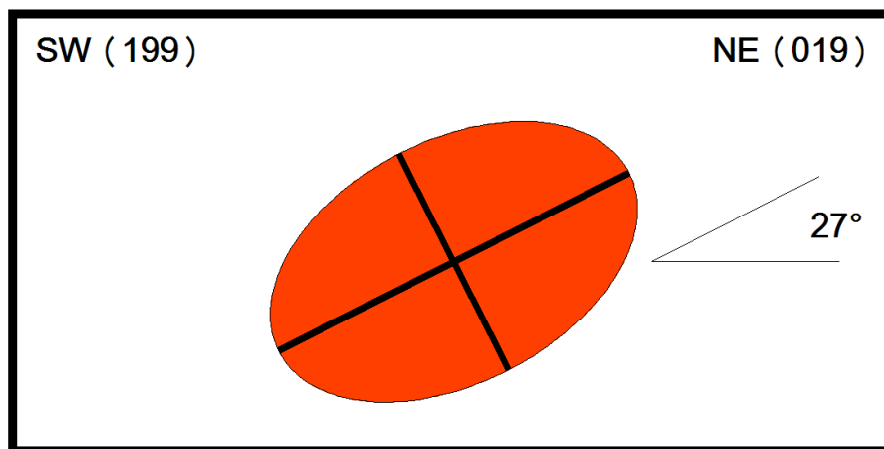
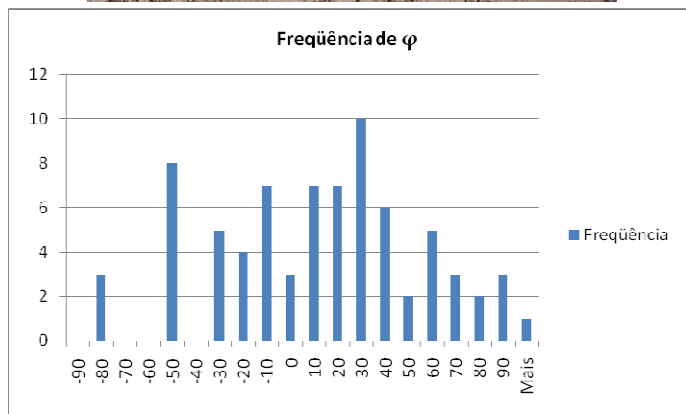
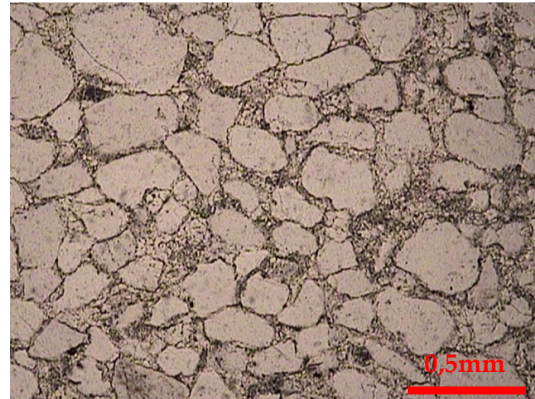
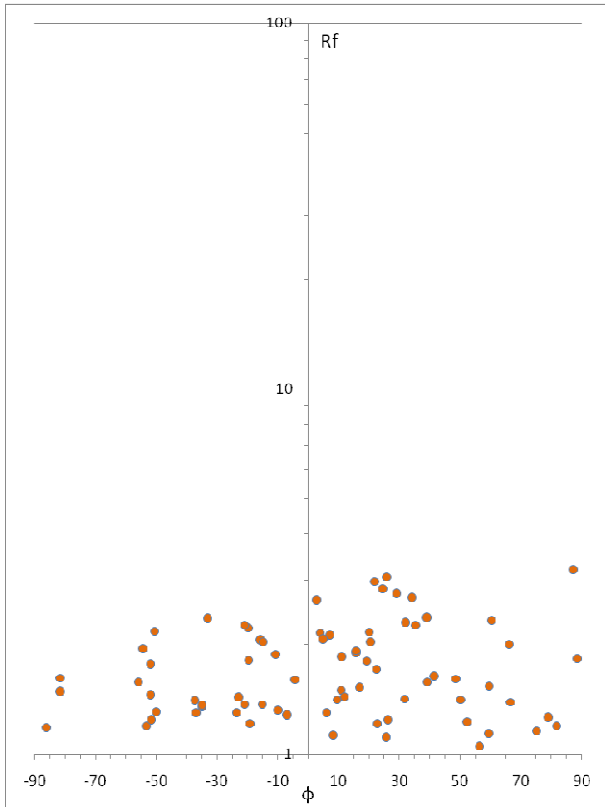


Análise da deformação – Amostra LLS 56 – Lâmina LLS 56-A

**AMOSTRA LLS 56**  
**Lâmina LLS 56-B**

Quartzito micáceo. Granulometria areia média. Grãos subarredondados a arredondados.

- Média harmônica de Rf: 1,62;  $\phi$  principal: 27°

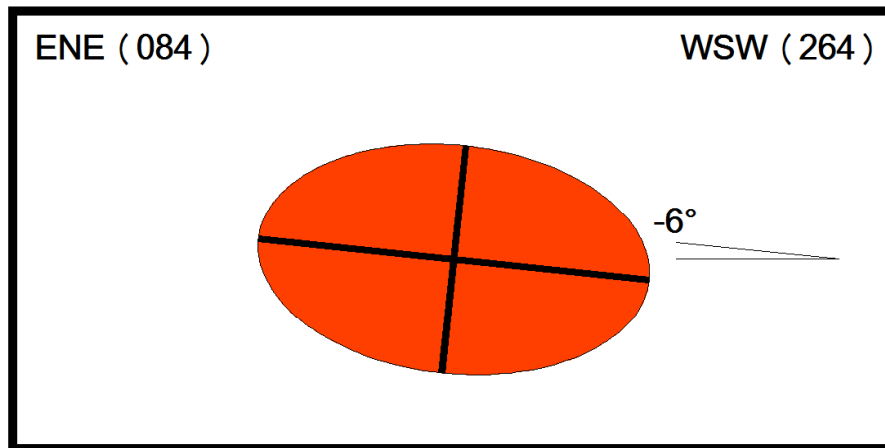
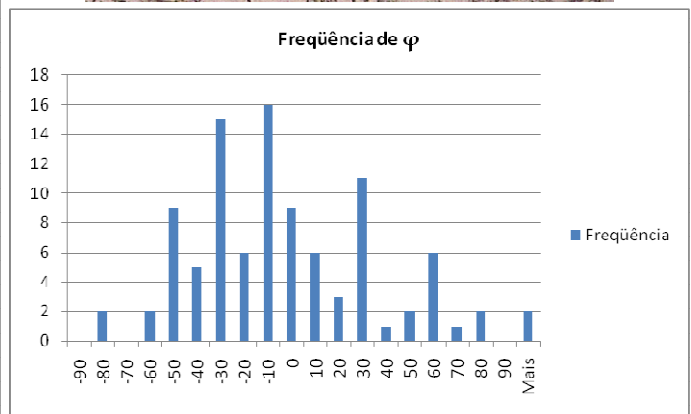
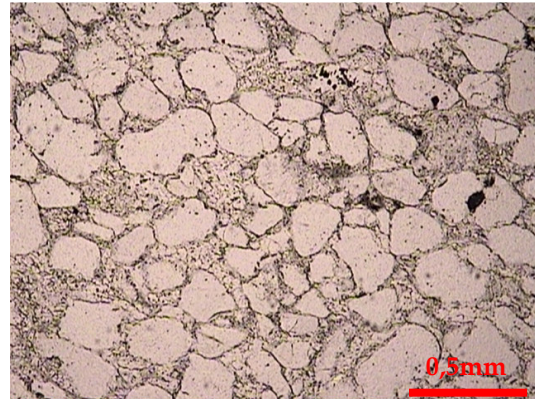
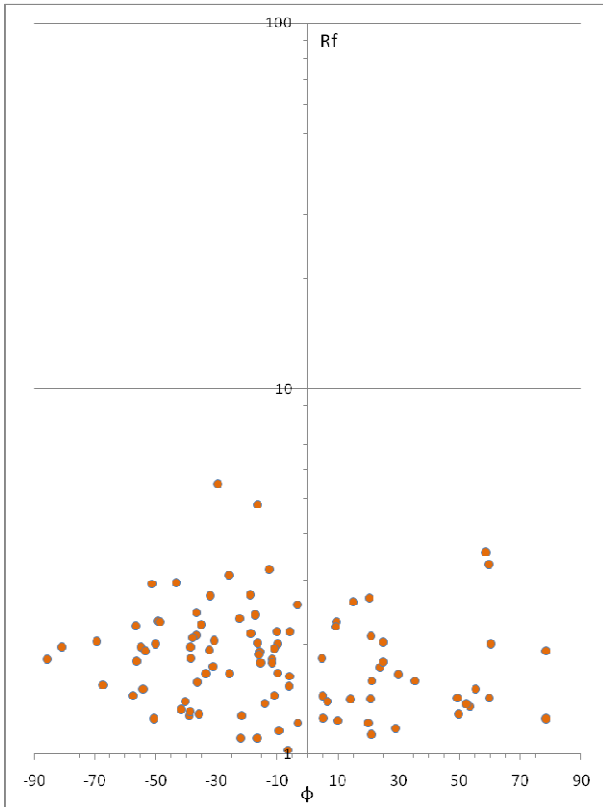


Análise da deformação – Amostra LLS 56 – Lâmina LLS 56-B

AMOSTRA LLS 56  
Lâmina LLS 56-C

Quartzito micáceo. Granulometria areia média. Grãos subarredondados a arredondados.

- Média harmônica de Rf: 1,72;  $\phi$  principal:  $-06^\circ$

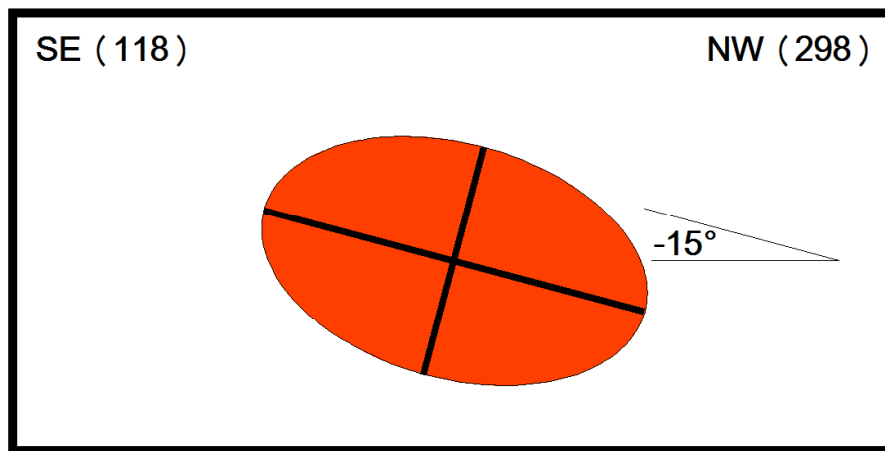
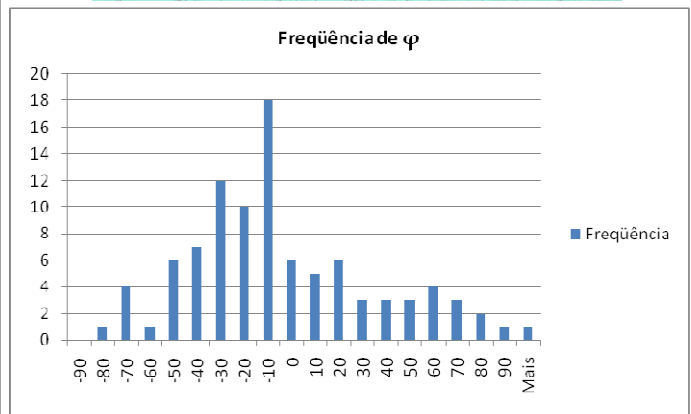
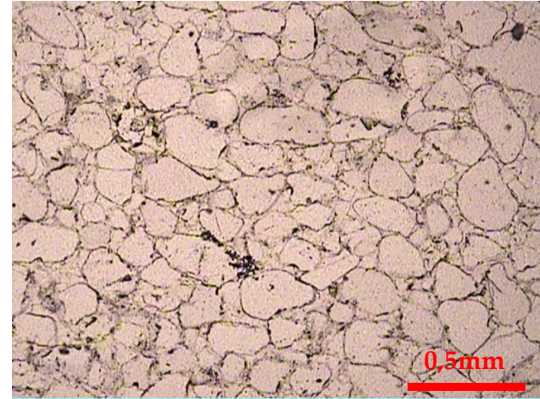
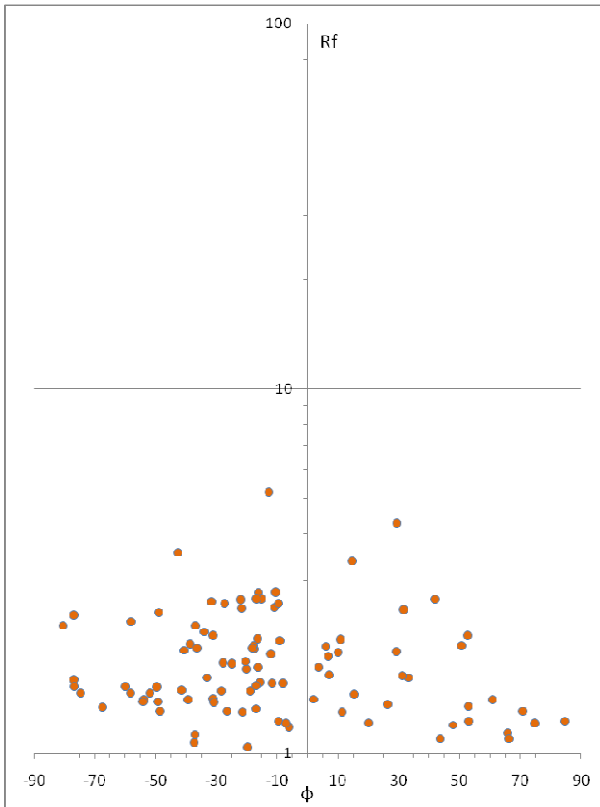


Análise da deformação – Amostra LLS 56 – Lâmina LLS 56-C

AMOSTRA LLS 56  
Lâmina LLS 56-D

Quartzito micáceo. Granulometria areia média. Grãos arredondados a bem arredondados.

- Média harmônica de Rf: 1,67;  $\varphi$  principal:  $-15^\circ$



Análise da deformação – Amostra LLS 56 – Lâmina LLS 56-D